

General Information

Location: OAXACA MEX
ICAO/IATA: MMOX / OAX
Lat/Long: N16° 59.9', W096° 43.6'
Elevation: 4989 ft

Airport Use: Public
Daylight Savings: Not Observed
UTC Conversion: +6:00 = UTC
Magnetic Variation: 4.0° E

Fuel Types: 100 Octane (LL), Jet A
Customs: Yes
Airport Type: IFR
Landing Fee: No
Control Tower: Yes
Jet Start Unit: No
LLWS Alert: No
Beacon: No

Sunrise: 1223 Z
Sunset: 0000 Z

Runway Information

Runway: 01
Length x Width: 8038 ft x 148 ft
Surface Type: asphalt
TDZ-Elev: 4966 ft
Lighting: Edge, ALS

Runway: 19
Length x Width: 8038 ft x 148 ft
Surface Type: asphalt
TDZ-Elev: 4989 ft
Lighting: Edge

Communication Information

Oaxaca Tower: 118.300
Oaxaca Approach: 121.100
Mexico Control ACC: 128.250 RCO
Mexico Control ACC: 123.500 RCO
Merida Control ACC: 128.300 RCO

Oaxaca Information: 122.300 AFIS

TMA

OAXACA, MEXICO

XOXOCOTLAN INTL



18 AUG 23

10-1B

*OAXACA Approach
121.1

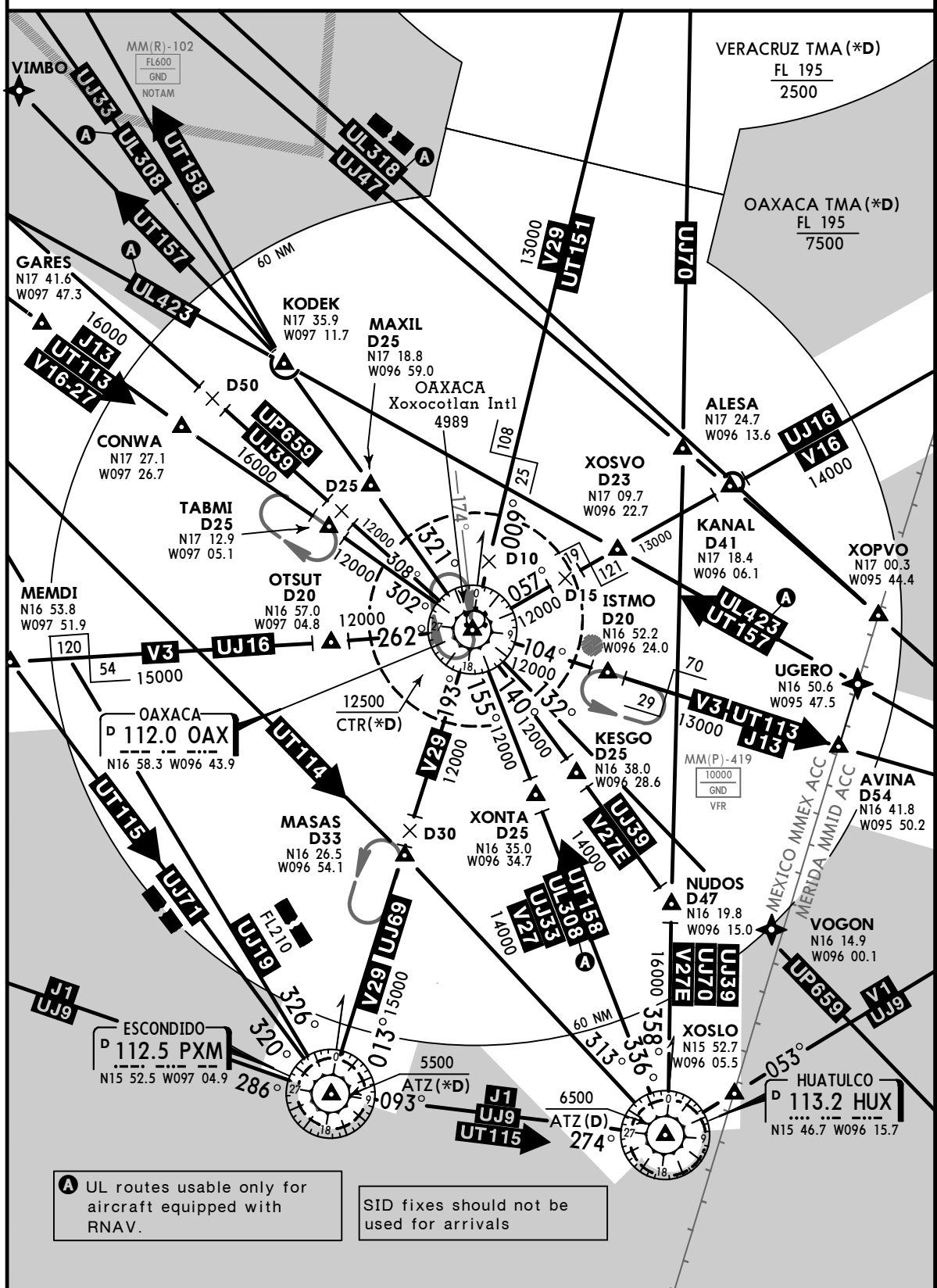
SPEED RESTRICTIONS WITHIN MEXICO AIRSPACE

MAXIMUM IAS UNLESS OTHERWISE DEPICTED OR AUTHORIZED BY ATC

- Below 3000' AGL within 10NM of any airport.....200 KTS
- Below 10000' MSL within Mexico Airspace.....250 KTS
- Below 10000' AGL within 30NM of any airport.....250 KTS

WITHIN OAXACA TMA

- At or below 8000' MSL within 10NM of OAX VORDME.....200 KTS
- At or below 15000' MSL within 30NM of OAX VORDME.....250 KTS



A UL routes usable only for aircraft equipped with RNAV.

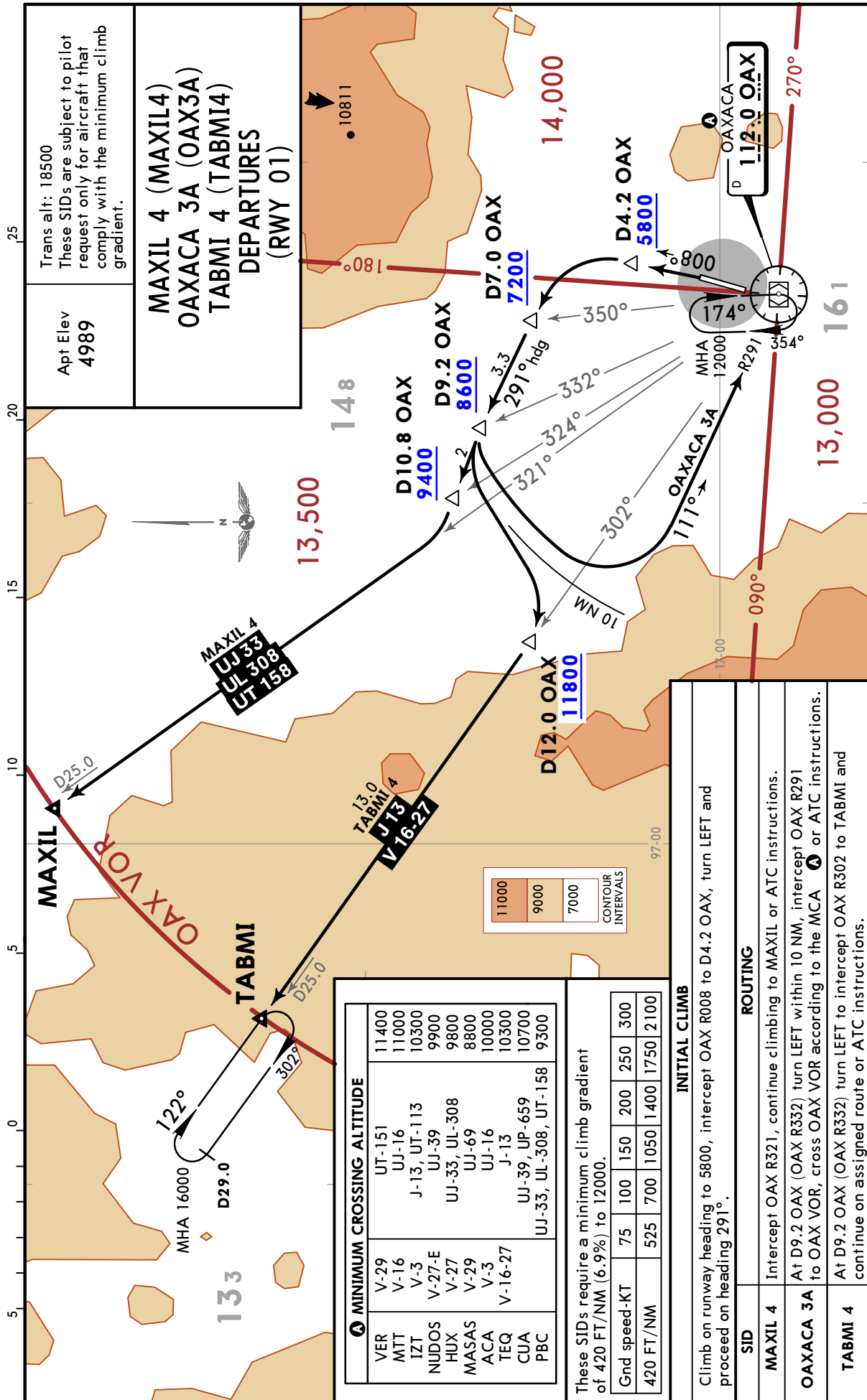
SID fixes should not be used for arrivals

MMOX/OAX
XOXOCOTLAN INTL

JEPPesen
9 JUN 23 **10-3** Eff 15 Jun

OAXACA, MEXICO

SID



CHANGES: MCA table revised.

MMOX/OAX

XOXOCOTLAN INTL



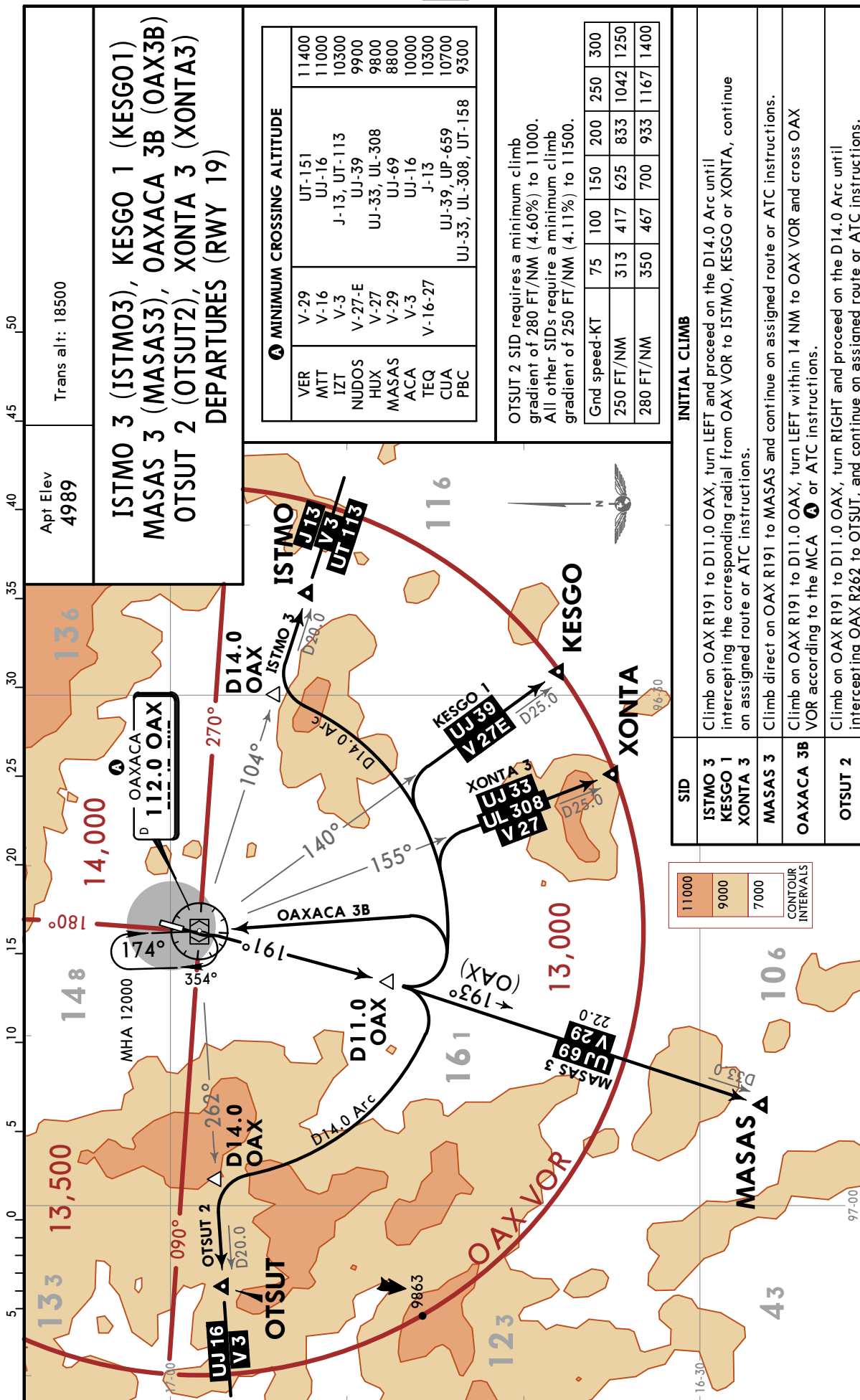
OAXACA, MEXICO

9 JUN 23

10-3A

Eff 15 Jun

SID



CHANGES: MCA table and MORA revised.

© JEPPesen, 2019, 2023. ALL RIGHTS RESERVED.

MMOX/OAX

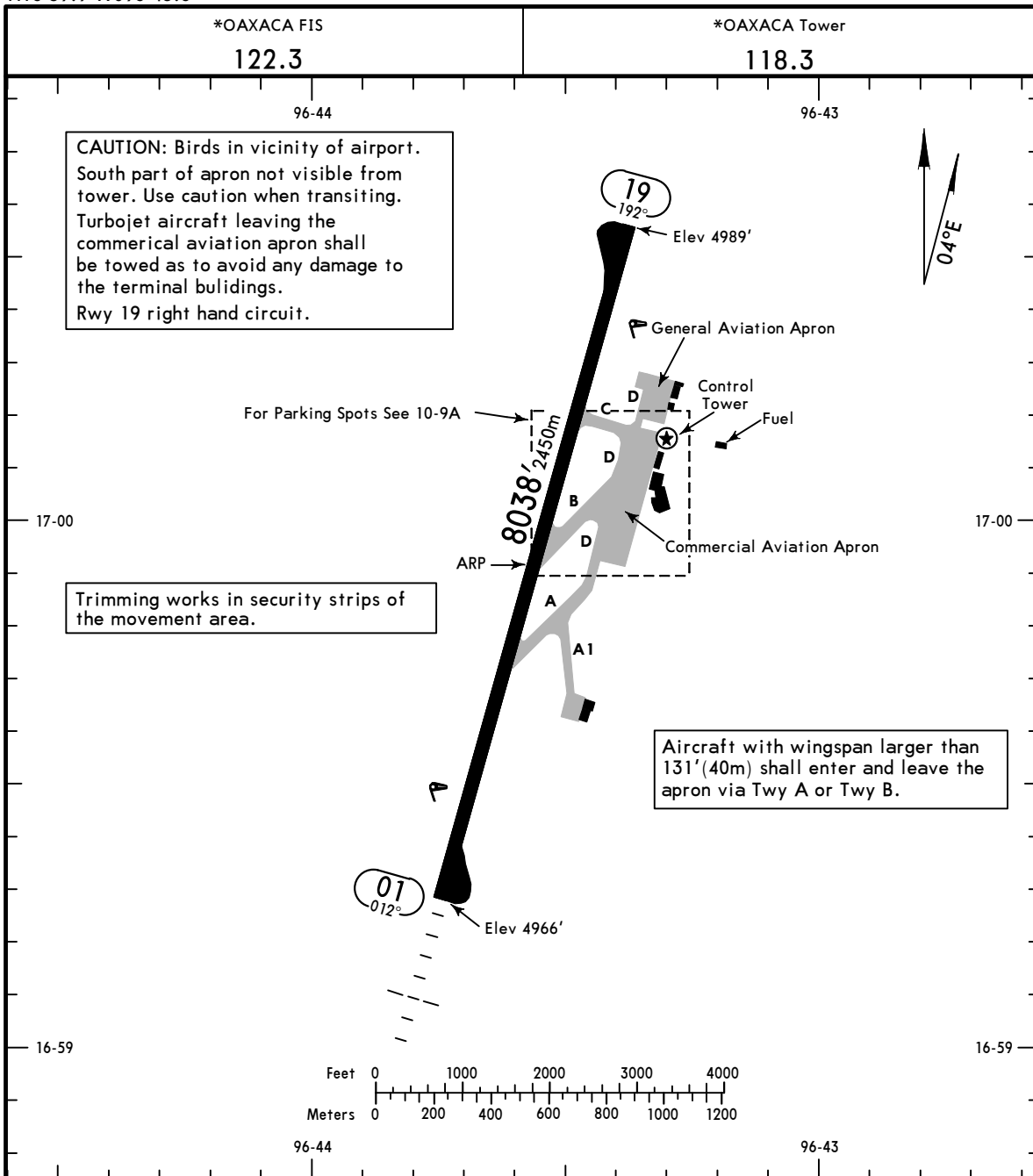
Apt Elev **4989'**
N16 59.9 W096 43.6

JEPPESEN

7 JUL 23 **(10-9)** Eff 13 Jul

OAXACA, MEXICO

XOXOCOTLAN INTL



CAUTION: Birds in vicinity of airport.
South part of apron not visible from tower. Use caution when transiting.
Turbojet aircraft leaving the commercial aviation apron shall be towed as to avoid any damage to the terminal buildings.
Rwy 19 right hand circuit.

Trimming works in security strips of the movement area.

Aircraft with wingspan larger than 131' (40m) shall enter and leave the apron via Twy A or Twy B.

ADDITIONAL RUNWAY INFORMATION

RWY		USABLE LENGTHS			WIDTH
		Threshold	Glide Slope	TAKE-OFF	
01	HIRL SALSF REIL PAPI-L (angle 3.0°)				148'
19	HIRL REIL PAPI-L (angle 3.0°)				45m

TAKE-OFF			FOR FILING AS ALTERNATE	
	Rwy 19	Rwy 01		
		DAY		
1 & 2 Eng	600-1	VFR	A	1700-3
3 & 4 Eng			B	
	C			
	D			

MMOX/OAX

JEPPesen

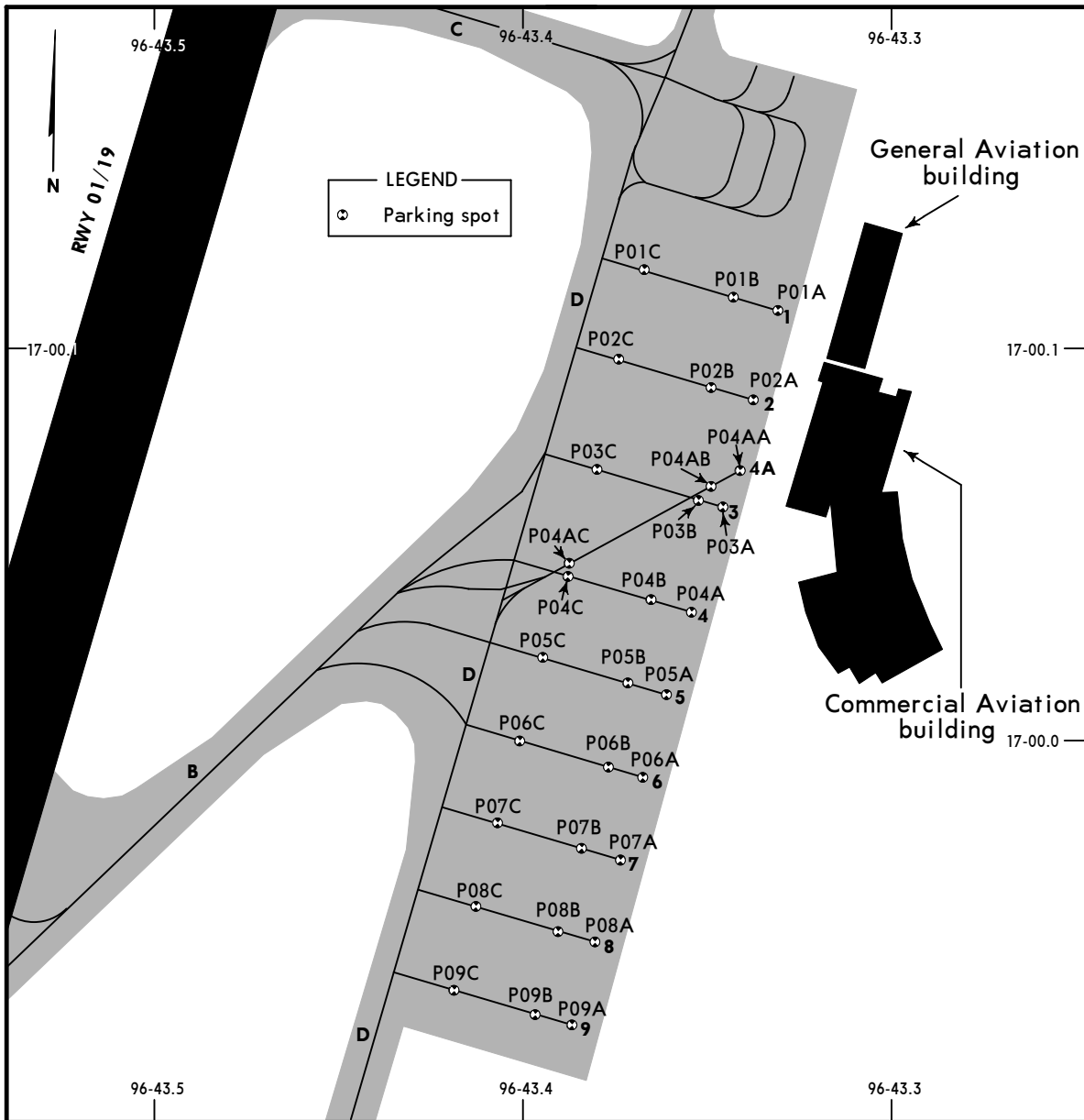
OAXACA, MEXICO

7 JUL 23

10-9A

Eff 13 Jul

XOXOCOTLAN INTL



PARKING SPOT COORDINATES

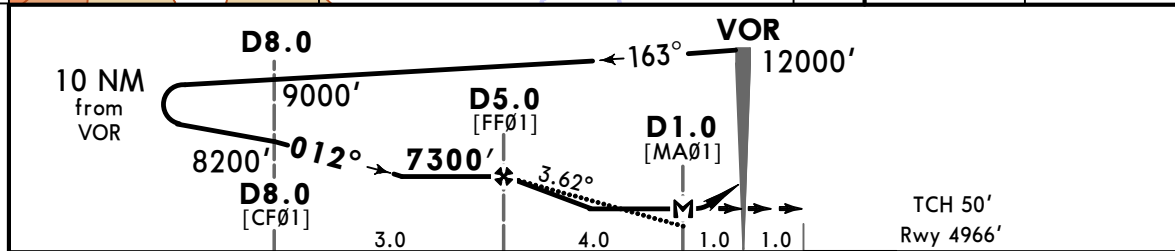
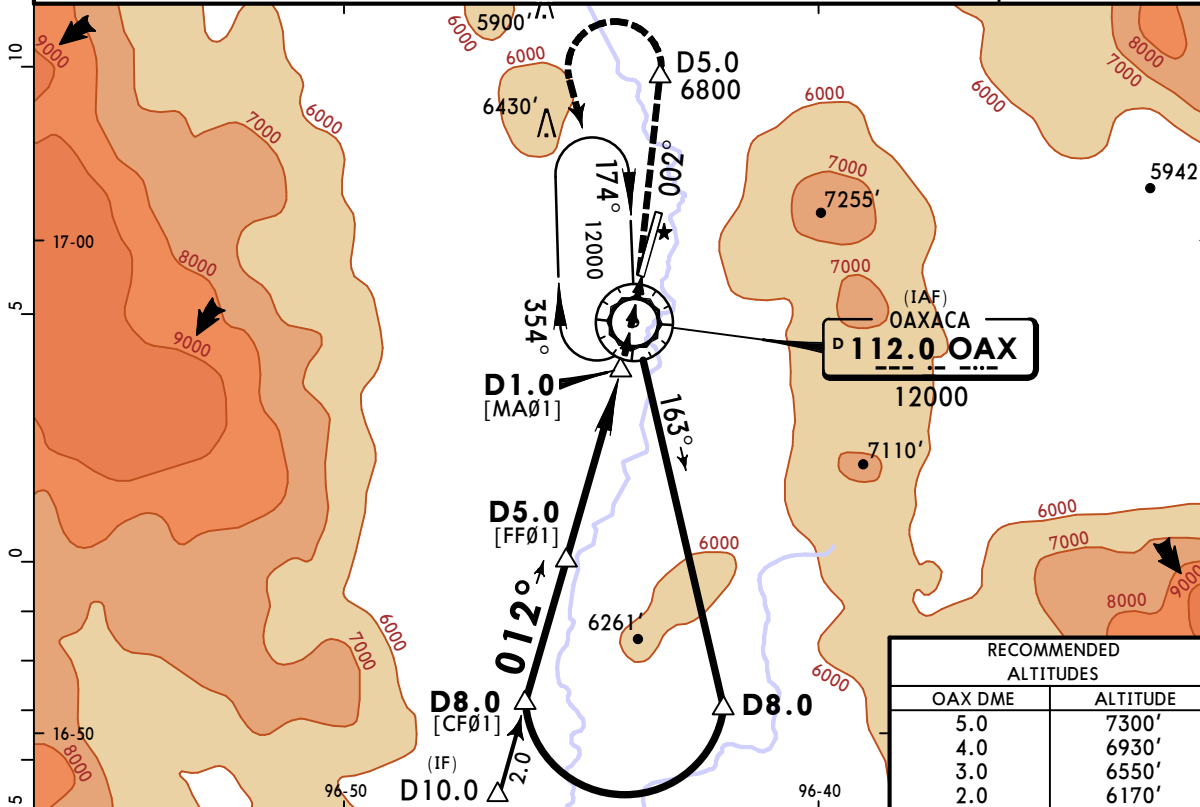
SPOT No.	COORDINATES
Commercial Aviation Apron	
P01A, P01B P01C	N17 00.1 W096 43.3 N17 00.1 W096 43.4
P02A, P02B	N17 00.1 W096 43.3
P02C	N17 00.1 W096 43.4
P03A	N17 00.1 W096 43.3
P03B, P03C	N17 00.1 W096 43.4
P04A, P04B, P04C	N17 00.0 W096 43.4
P04AA, P04AB	N17 00.1 W096 43.3
P04AC, P05A thru P07C	N17 00.0 W096 43.4
P08A, P08B	N16 59.9 W096 43.4
P08C	N17 00.0 W096 43.4
P09A, P09B, P09C	N16 59.9 W096 43.4

MMOX/OAX
XOXOCOTLAN INTL

JEPPESSEN
19 JAN 24 **13-1** Eff 25 Jan

OAXACA, MEXICO
VOR Z Rwy 01

*OAXACA Approach				*OAXACA Tower					
121.1				118.3					
VOR OAX 112.0	Final Apch Crs 012°	D5.0 7300' (2334')	MDA(H) 5840' (874')	Apt Elev 4989'		Rwy 4966'			
MISSED APCH: Climb outbound on OAX VOR R-002 to D5.0, then turn LEFT within 7 NM to OAX VOR and then on OAX VOR R-192 to proceed on the reverse approach track to the minimum holding altitude.							<p>MSA OAX VOR</p>		
In case of DME failure during Missed Apch:									
Gnd Speed-Kts		80	100	120	140	160		180	200
MAX outbound distance 6 NM from MAP.		4:30	3:36	3:00	2:34	2:15		2:00	1:48
Alt Set: IN(MB on req)		Trans level: FL195			Trans alt: 18500'				
1. DME required. 2. Maximum speed for approach 160 KTS or minimum for maneuvering. 3. In case of the loss of an engine below MDA(H) a climb gradient of 470'/NM must be maintained until reaching 6800'.									



Gnd speed-Kts	70	90	100	120	140	160	SALS F REIL PAPI	OAX on 112.0 R-002	D5.0
Descent Angle 3.62°	448	577	641	769	897	1025			
MAP at D1.0									
D5.0 to MAP	4.0	3:26	2:40	2:24	2:00	1:43	1:30		

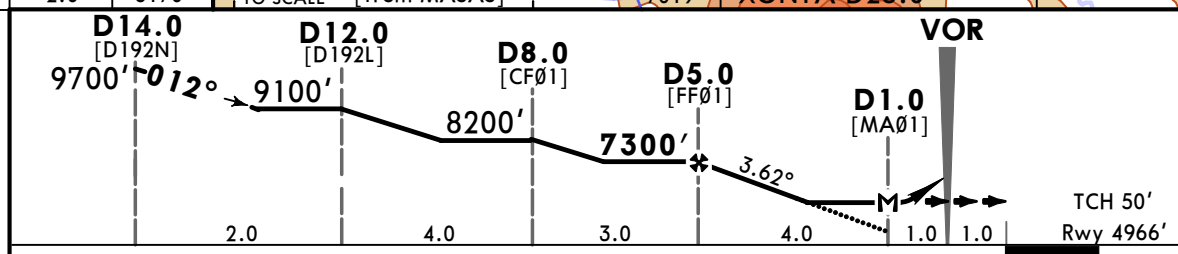
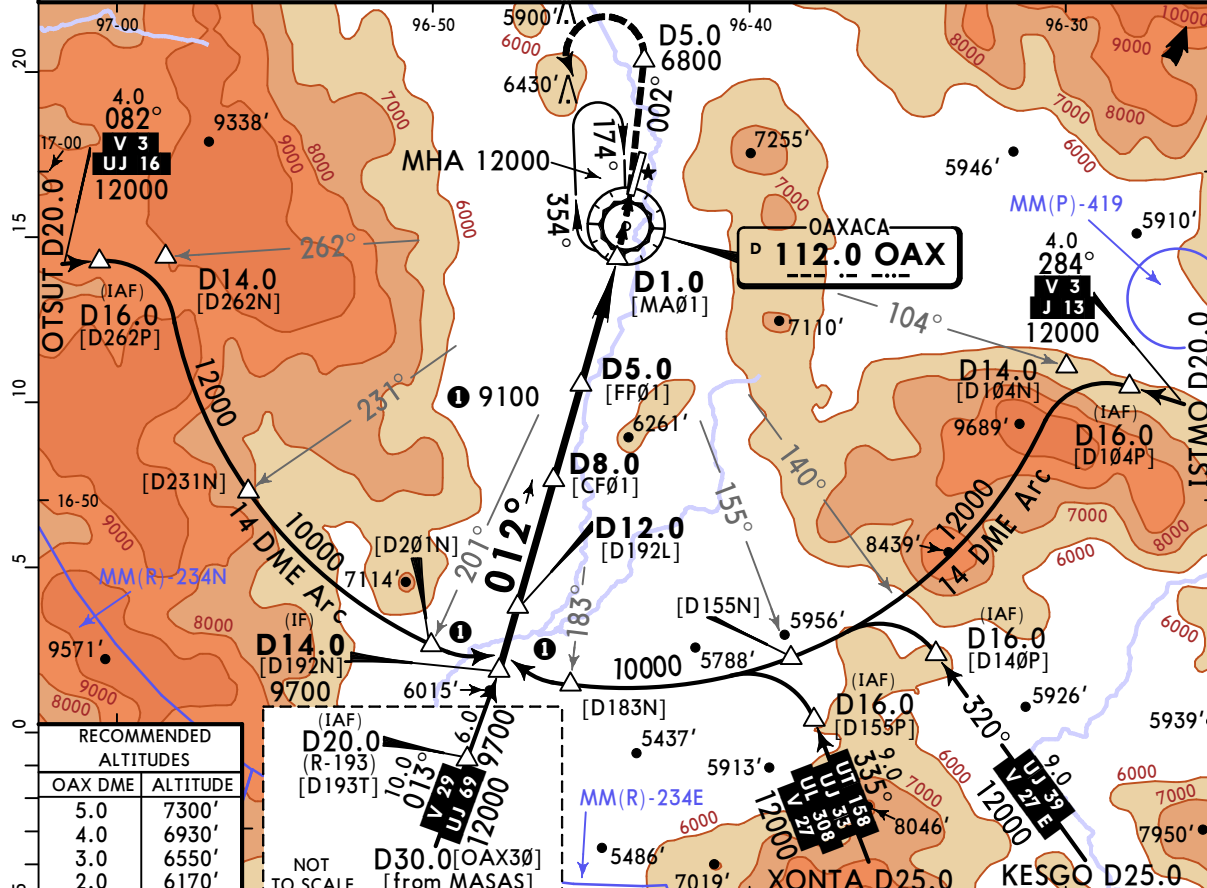
STRAIGHT-IN LANDING RWY01				CIRCLE-TO-LAND			
MDA(H) 5840' (874')				Not Authorized East of Rwy			
ALS out				Max Kts			
A	2			90			5840' (851') -2
B	2			120			
C	2½			140			6740' (1751') -3
D	2¾			165			

MMOX/OAX
XOXOCOTLAN INTL

JEPPESSEN
19 JAN 24 **(13-2)** Eff 25 Jan

OAXACA, MEXICO
VOR Y Rwy 01

*OAXACA Approach				*OAXACA Tower																			
121.1				118.3																			
VOR OAX 112.0	Final Apch Crs 012°	D5.0 7300' (2334')	MDA(H) 5840' (874')	Apt Elev 4989'		Rwy 4966'																	
<p>MISSED APCH: Climb outbound on OAX VOR R-002 to D5.0, then turn LEFT within 7 NM to OAX VOR and then on OAX VOR R-192 to proceed on the reverse approach track to the minimum holding altitude.</p> <p>In case of DME failure during Missed Apch:</p> <table border="1" style="width:100%; border-collapse: collapse;"> <tr> <td>Gnd Speed-Kts</td> <td>80</td> <td>100</td> <td>120</td> <td>140</td> <td>160</td> <td>180</td> <td>200</td> </tr> <tr> <td>MAX outbound distance 6 NM from MAP.</td> <td>4:30</td> <td>3:36</td> <td>3:00</td> <td>2:34</td> <td>2:15</td> <td>2:00</td> <td>1:48</td> </tr> </table>								Gnd Speed-Kts	80	100	120	140	160	180	200	MAX outbound distance 6 NM from MAP.	4:30	3:36	3:00	2:34	2:15	2:00	1:48
								Gnd Speed-Kts	80	100	120	140	160	180	200								
MAX outbound distance 6 NM from MAP.	4:30	3:36	3:00	2:34	2:15	2:00	1:48																
				MSA OAX VOR																			
Alt Set: IN(MB on req)				Trans level: FL195		Trans alt: 18500'																	
<p>1. DME required. 2. Maximum speed for approach 160 KTS or minimum for maneuvering. 3. In case of DME failure at any point during the procedure, maintain last altitude and proceed to the station in accordance with ATC instructions. 4. In case of the loss of an engine below MDA(H) a climb gradient of 470'/NM must be maintained until reaching 6800'.</p>																							



Gnd speed-Kts	70	90	100	120	140	160	REIL PAPI	SALS ↑	OAX on 112.0 R-002	D5.0
Descent Angle 3.62°	448	577	641	769	897	1025				
MAP at D1.0										
FAF to MAP	4.0	3:26	2:40	2:24	2:00	1:43	1:30			

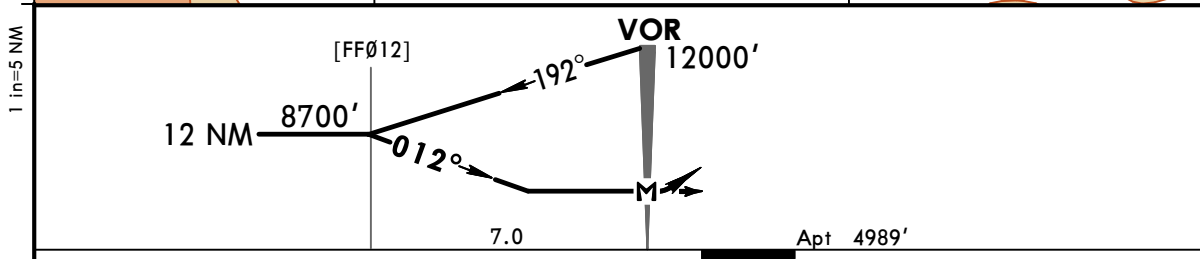
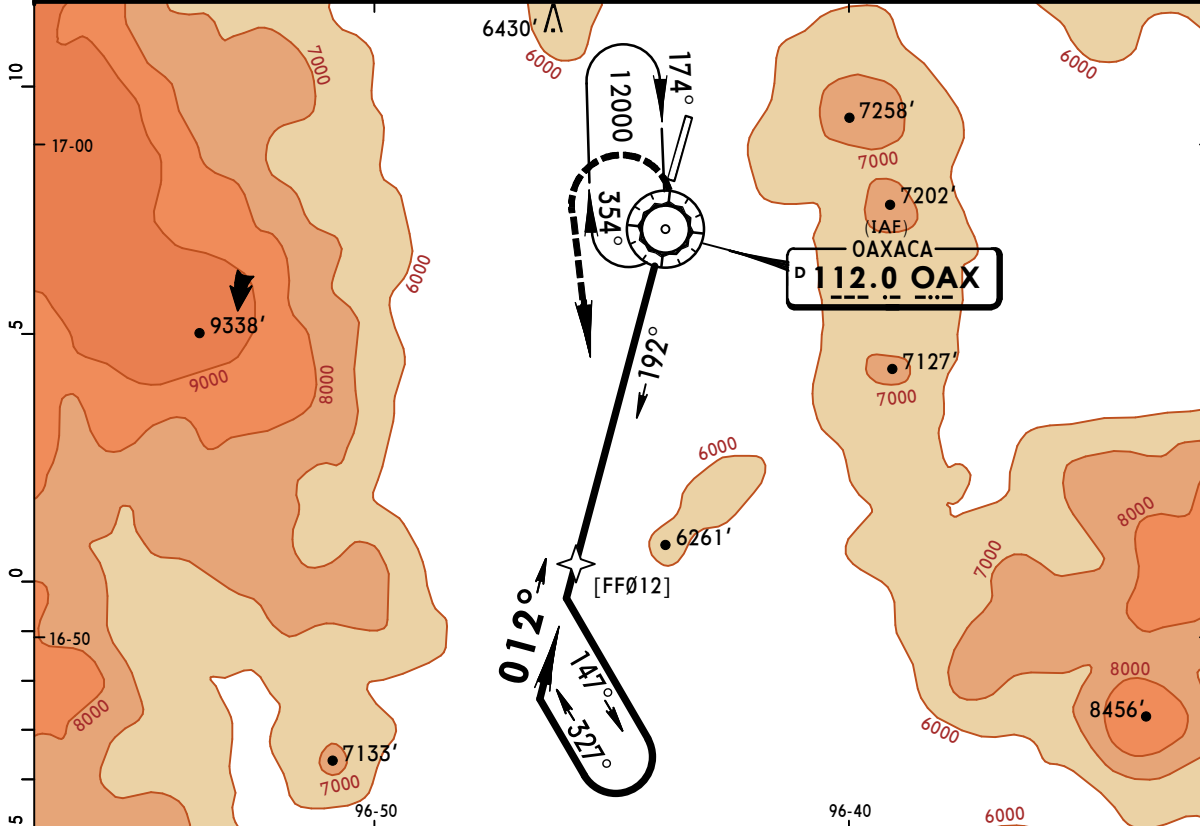
STRAIGHT-IN LANDING RWY01				CIRCLE-TO-LAND Not Authorized East of Rwy			
MDA(H) 5840' (874')				Max Kts.			
ALS out				MDA(H)			
A	2			90	5840' (851') -2		
B	2			120	6740' (1751') -3		
C	2½			140	6740' (1751') -3		
D	2¾			165	6740' (1751') -3		

MMOX/OAX XOXOCOTLAN INTL

JEPPESSEN
1 JUN 18 **(13-3)**

OAXACA, MEXICO VOR-A

*OAXACA Approach 121.1		MEXICO Center Sector 2 128.0 when App inop.		*OAXACA Tower 118.3	
VOR OAX 112.0	Final Apch Crs 012°	No FAF	MDA(H) Refer to Minimums	Apt Elev 4989'	
MISSED APCH: Climbing LEFT turn to intercept OAX VOR R-192. Proceed on the approach track to the minimum holding altitude.					
Alt Set: MB(IN on req) Apt Elev: 170 MB Trans level: FL 195 Trans alt: 18500' 1. Maximum speed for approach 160 KIAS or minimum for maneuvering.					MSA OAX VOR



MAP at VOR										Lighting - Refer to Airport Chart	LT	OAX 112.0 R-192
------------	--	--	--	--	--	--	--	--	--	--	----	-------------------------------------

		CIRCLE-TO-LAND	
		Not Authorized East of Rwy	
	Max Kts	MDA(H)	
A	90	5840' (851') - 1	
B	120	5840' (851') - 1¼	
C	140	6740' (1751') - 3	
D	165		