

General Information

Location: CIUDAD DEL CARMEN MEX
ICAO/IATA: MMCE / CME
Lat/Long: N18° 39.1', W091° 48.0'
Elevation: 10 ft

Airport Use: Public
Daylight Savings: Not Observed
UTC Conversion: +6:00 = UTC
Magnetic Variation: 1.0° E

Fuel Types: 100-130 Octane, Jet A
Customs: Yes
Airport Type: IFR
Landing Fee: No
Control Tower: Yes
Jet Start Unit: No
LLWS Alert: No
Beacon: Yes

Sunrise: 1148 Z
Sunset: 0035 Z

Runway Information

Runway: 13
Length x Width: 7218 ft x 148 ft
Surface Type: asphalt
TDZ-Elev: 9 ft
Lighting: Edge

Runway: 31
Length x Width: 7218 ft x 148 ft
Surface Type: asphalt
TDZ-Elev: 9 ft
Lighting: Edge

Communication Information

ATIS: 127.800
Carmen Tower: 118.400
Carmen Approach: 119.100
Merida Control ACC: 125.800 RCO
Carmen Information: 122.300

Merida Control ACC: 128.300 RCO

MMCE/CME
CIUDAD DEL CARMEN INTL



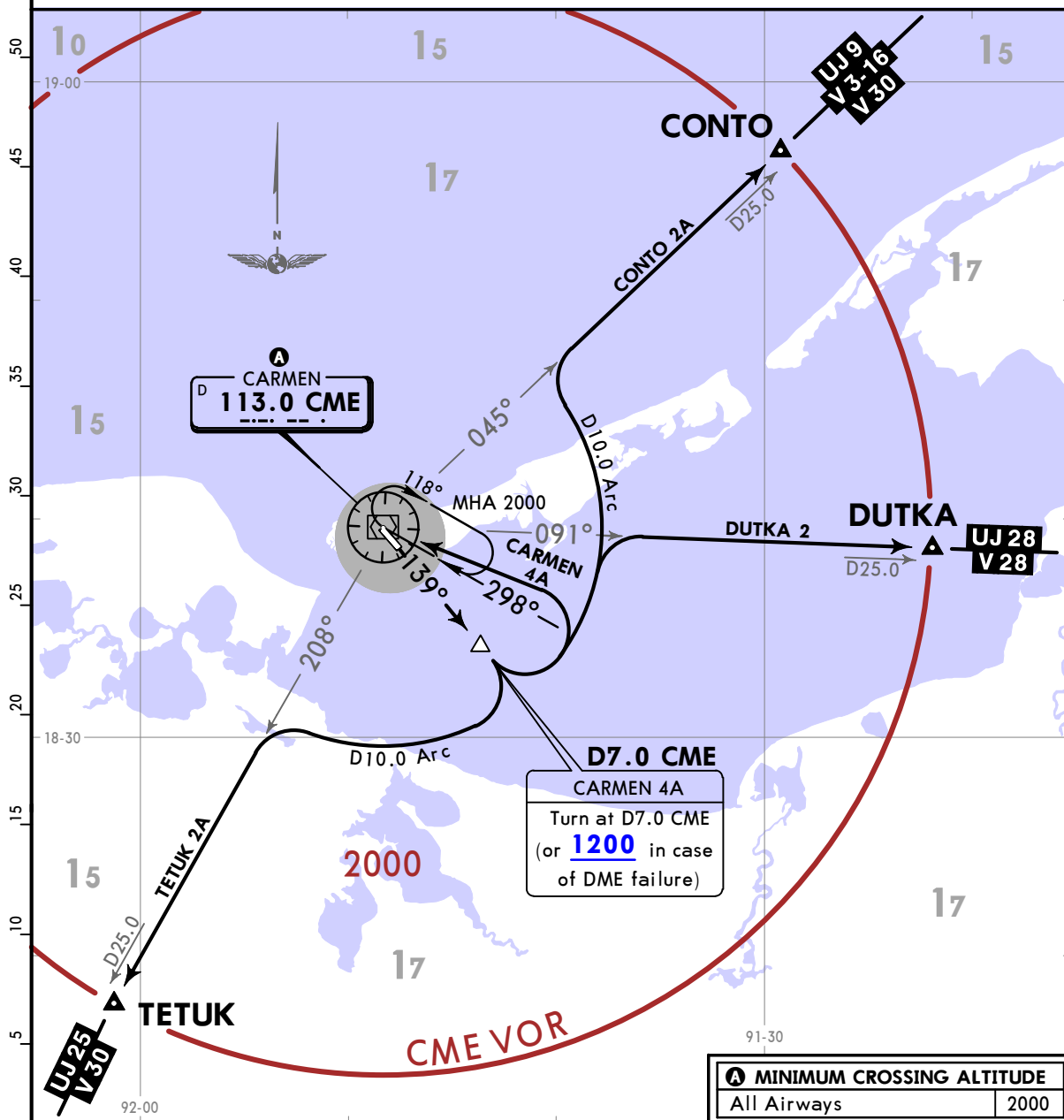
10 JUN 22 10-3 Eff 16 Jun

CIUDAD DEL CARMEN,
MEXICO

SID

Apt Elev 10	Trans alt: 18500
----------------	------------------

CARMEN 4A (CME4A) [CME4A]
CONTO 2A (CONTO2A) [CONT2A]
DUTKA 2 (DUTKA2) [DUTKA2]
TETUK 2A (TETUK2A) [TETU2A]
DEPARTURES
(RWY 13)



A MINIMUM CROSSING ALTITUDE	2000
All Airways	

SID	INITIAL CLIMB
CARMEN 4A	Climb via CME R139 to D7.0 CME (or 1200 in case of DME failure), then turn LEFT within 10 NM to CME VOR and cross it according to the minimum crossing altitude A or ATC instructions.
CONTO 2A DUTKA 2	Climb via CME R139 to D7.0 CME, then turn LEFT and proceed on the D10.0 Arc CME to intercept the corresponding radial from CME VOR to CONTO or DUTKA and continue on the assigned route or ATC instructions.
TETUK 2A	Climb via CME R139 to D7.0 CME, then turn RIGHT and proceed on the D10.0 Arc CME to intercept CME R208 to TETUK and continue on the assigned route or ATC instructions.

CHANGES: Airways.

© JEPPESEN, 2019, 2022. ALL RIGHTS RESERVED.

MMCE/CME
CIUDAD DEL CARMEN INTL

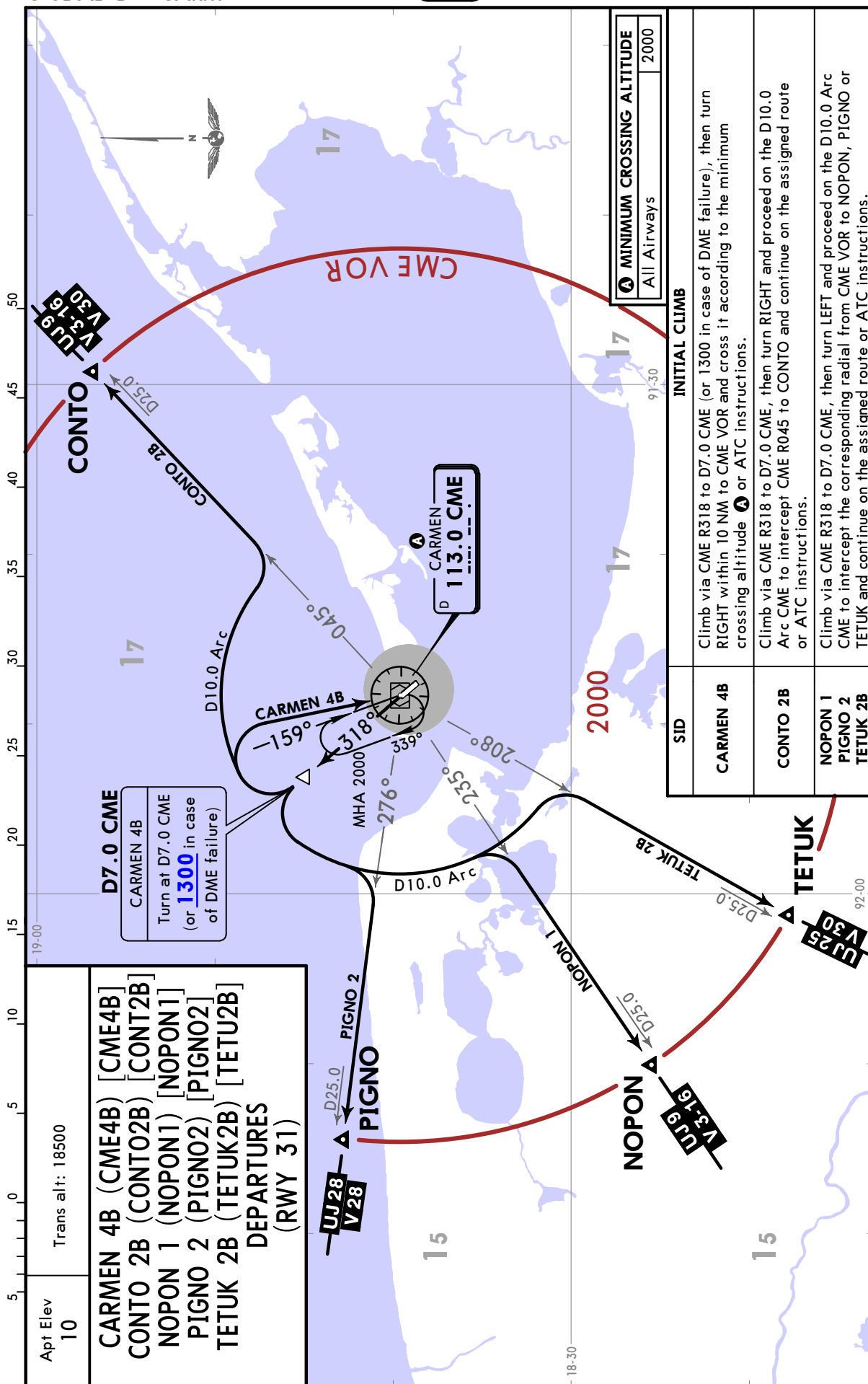
10 JUN 22

10-3A

Eff 16 Jun

CIUDAD DEL CARMEN,
MEXICO

SID



CHANGES: Airways.

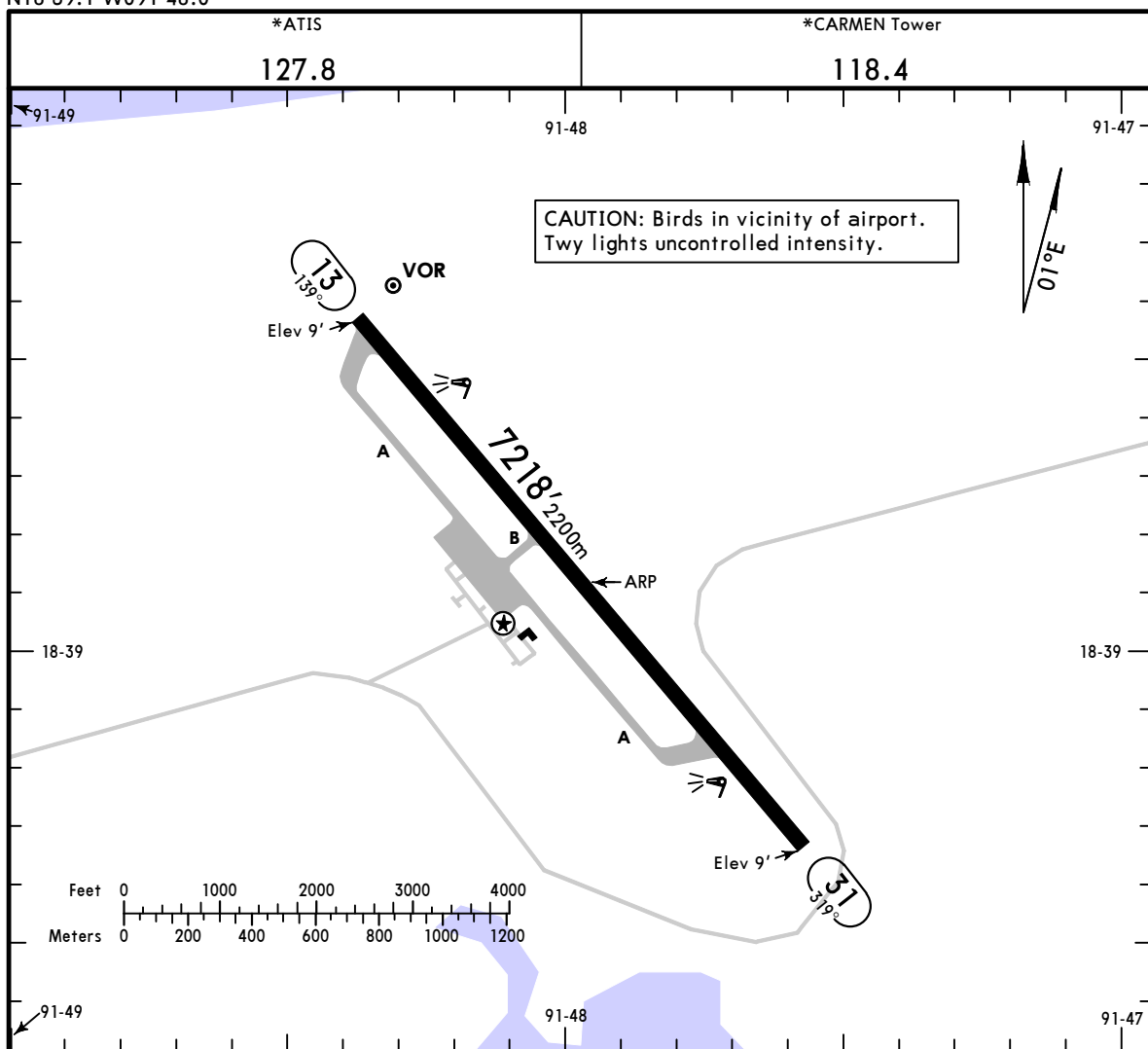
© JEPPESEN, 2019, 2022. ALL RIGHTS RESERVED.

MMCE/CME

Apt Elev 10'
N18 39.1 W091 48.0

JEPPESEN CIUDAD DEL CARMEN, MEX

2 AUG 24 (10-9) Eff 8 Aug CIUDAD DEL CARMEN INTL



RWY	USABLE LENGTHS	WIDTH
13 31	HIRL PAPI-L (angle 3.0°)	148' 45m

State		TAKE-OFF				
1 HIRL & CL (spacing 15m or less) & relevant RVR	RL & CL & relevant RVR	RL & CL	2 RL & RCLM	2 RL or RCLM	Adequate Vis Ref	
					DAY	NIGHT
TDZ/Mid/Rollout R4 R125m	TDZ/Mid/Rollout R5 R150m	R6 R/V200m	R10 R/V300m	R12 R/V400m	R16 R/V500m	NA

1 TDZ/Mid/Rollout R3 or R75m with approved lateral guidance system.
2 For NIGHT operations, at least RL or CL and RENL are required.

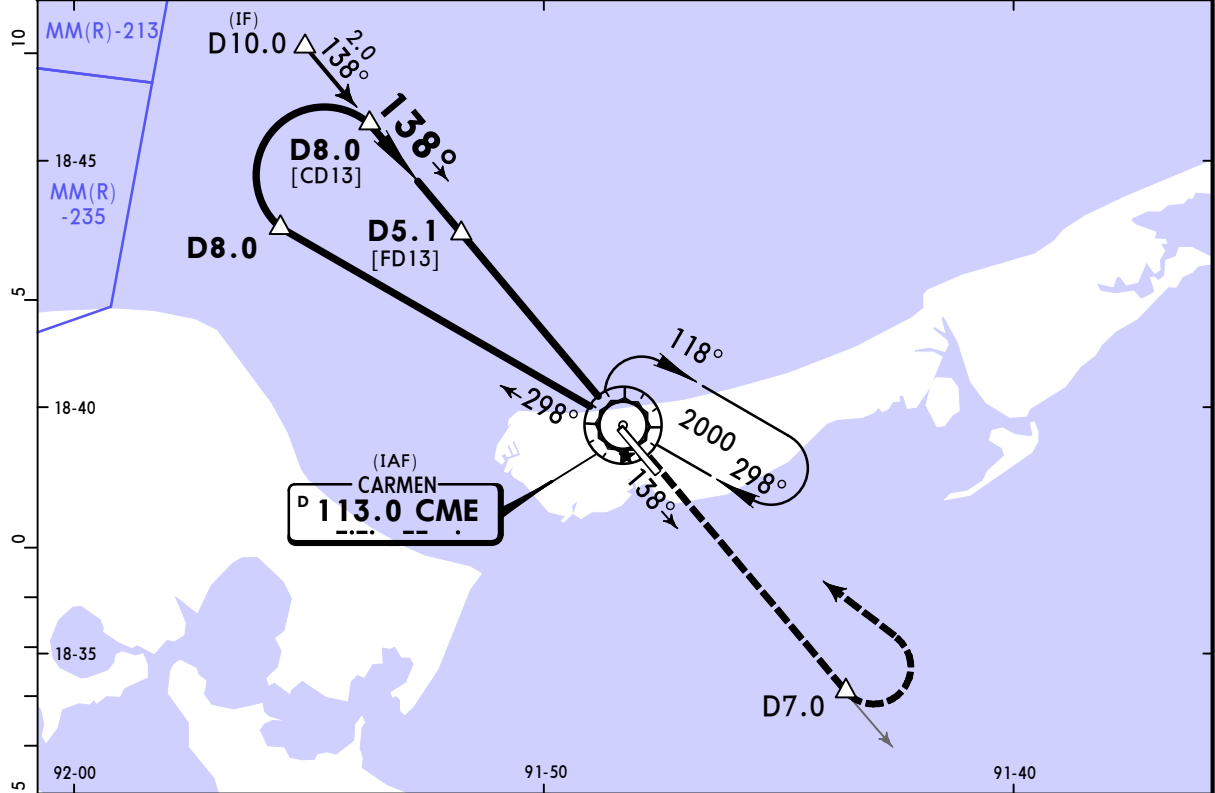
The TDZ RVR/VIS may be assessed by the pilot.
Adequate visual reference means that a pilot is able to continuously indentify the take-off surface and maintain directional control.
Take-off minimums which are relevant to the take-off manoeuvre itself, should not be confused with weather minimums required for flight initiation. Departure weather minimums at an aerodrome should not be less than the applicable minimums for landing at that aerodrome unless a suitable take-off alternate aerodrome is available. The take-off alternate aerodrome should have weather conditions and facilities suitable for landing the aeroplane in normal and non-normal configurations pertinent to the operation.

MMCE/CME
CIUDAD DEL CARMEN INTL

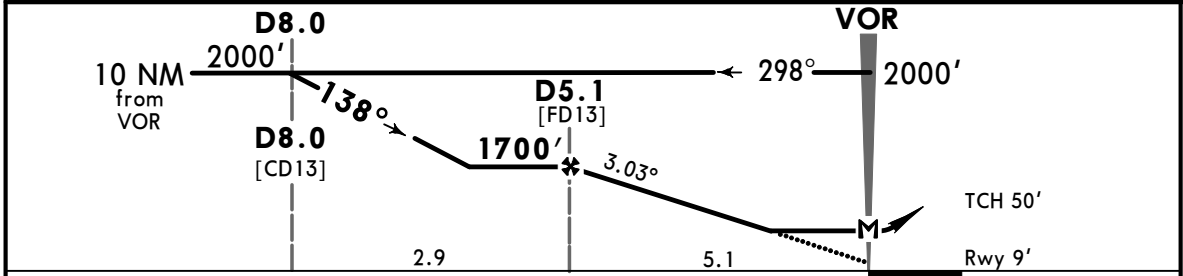
JEPPesen CIUDAD DEL CARMEN, MEX
 2 AUG 24 **(13-1)** Eff 8 Aug

VOR Z Rwy 13

*ATIS 127.8		*CARMEN Approach 119.1		*CARMEN Tower 118.4		
VOR CME 113.0	Final Apch Crs 138°	D5.1 1700' (1691')	MDA(H) 440' (431')	Apt Elev 10' Rwy 9'		
MISSED APCH: Climb outbound via CME VOR R-138 to D7.0, then turn LEFT within 10 NM to CME VOR at the minimum holding altitude.					2000 MSA CME VOR	
Alt Set: IN (MB on req)		Trans level: FL 195		Trans alt: 18500'		
DME required.						



CME DME	4.0	3.0	2.0
ALTITUDE	1350'	1020'	700'



Gnd speed-Kts	70	90	100	120	140	160	PAPI-L	CME via 113.0 R-138	D7.0	
Descent Angle	3.03°	375	482	536	643	750				858
MAP at VOR										
D5.1 to MAP	5.1	4:22	3:24	3:04	2:33	2:11				1:55

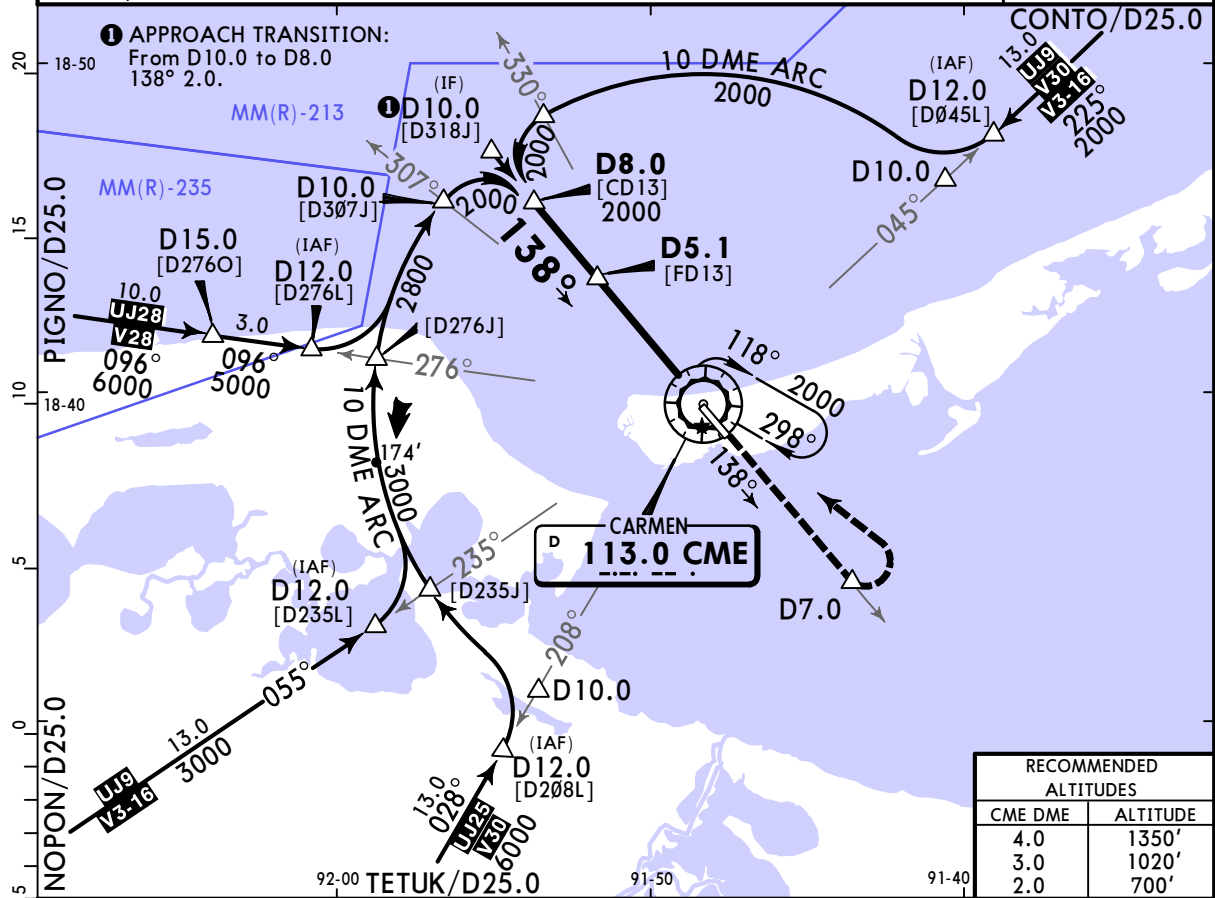
STRAIGHT-IN LANDING RWY 13			CIRCLE-TO-LAND		
MDA(H) 440' (431')			MDA(H)		
A		1	Max Kts	90	500' (490') - 1
B		1 1/4	120		500' (490') - 1 1/2
C		1 1/2	140		560' (550') - 2
D		1 1/2	165		

MMCE/CME CIUDAD DEL CARMEN INTL

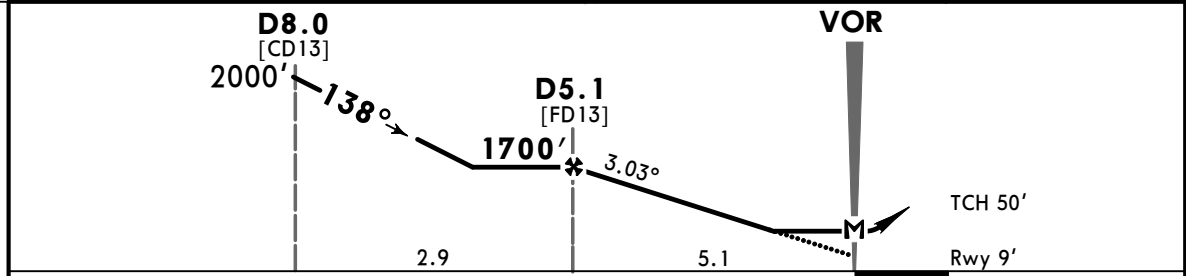
JEPPESEN CIUDAD DEL CARMEN, MEX VOR Y Rwy 13

2 AUG 24 **13-2** Eff 8 Aug

*ATIS 127.8		*CARMEN Approach 119.1		*CARMEN Tower 118.4	
VOR CME 113.0	Final Apch Crs 138°	D5.1 1700' (1691')	MDA(H) 440' (431')	Apt Elev 10' Rwy 9'	2000
MISSED APCH: Climb outbound via CME VOR R-138 to D7.0, then turn LEFT within 10 NM to CME VOR at the minimum holding altitude.					
Alt Set: IN (MB on req)			Trans level: FL 195		Trans alt: 18500'
DME required.					MSA CME VOR



RECOMMENDED ALTITUDES	
CME DME	ALTITUDE
4.0	1350'
3.0	1020'
2.0	700'



Gnd speed-Kts	70	90	100	120	140	160	PAPI-L	CME via 113.0 R-138	D7.0
Descent Angle 3.03°	375	482	536	643	750	858			
MAP at VOR									
D5.1 to MAP	5.1	4:22	3:24	3:04	2:33	2:11	1:55		

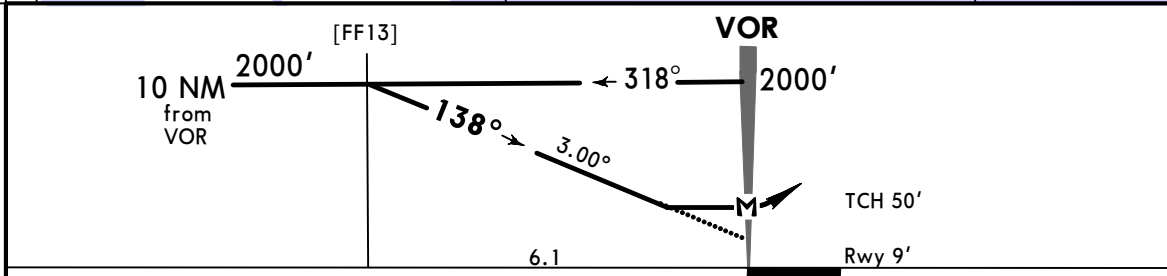
STRAIGHT-IN LANDING RWY 13			CIRCLE-TO-LAND		
MDA(H) 440' (431')			MDA(H)		
A			Max Kts.		
B	1		90	500'	(490') - 1
C	1¼		140	500'	(490') - 1½
D	1½		165	560'	(550') - 2

MMCE/CME

CIUDAD DEL CARMEN INTL 2 AUG 24 **13-3** Eff 8 Aug

VOR X Rwy 13

*ATIS 127.8		*CARMEN Approach 119.1			*CARMEN Tower 118.4																	
VOR CME 113.0	Final Apch Crs 138°	No FAF	MDA(H) 500'(491')	Apt Elev 10' Rwy 9'			2000															
MISSED APCH: Climb outbound via CME VOR R-138, then turn LEFT within 10 NM to CME VOR at the minimum holding altitude.																						
MISSED APCH: Max Distance Outbound Track 7 NM <table border="1"> <tr> <td>Gnd speed-Kts</td> <td>80</td> <td>100</td> <td>120</td> <td>140</td> <td>160</td> <td>180</td> <td>200</td> </tr> <tr> <td>Time</td> <td>5:15</td> <td>4:12</td> <td>3:30</td> <td>3:00</td> <td>2:37</td> <td>2:20</td> <td>2:06</td> </tr> </table>								Gnd speed-Kts	80	100	120	140	160	180	200	Time	5:15	4:12	3:30	3:00	2:37	2:20
Gnd speed-Kts	80	100	120	140	160	180	200															
Time	5:15	4:12	3:30	3:00	2:37	2:20	2:06															
Alt Set: IN (MB on req)		Trans level: FL 195			Trans alt: 18500'		MSA CME VOR															



Gnd speed-Kts	70	90	100	120	140	160	PAPI-L	CME via 113.0 R-138	LT within 10 NM	CME 113.0
Descent Angle 3.00°	372	478	531	637	743	849				
MAP at VOR										

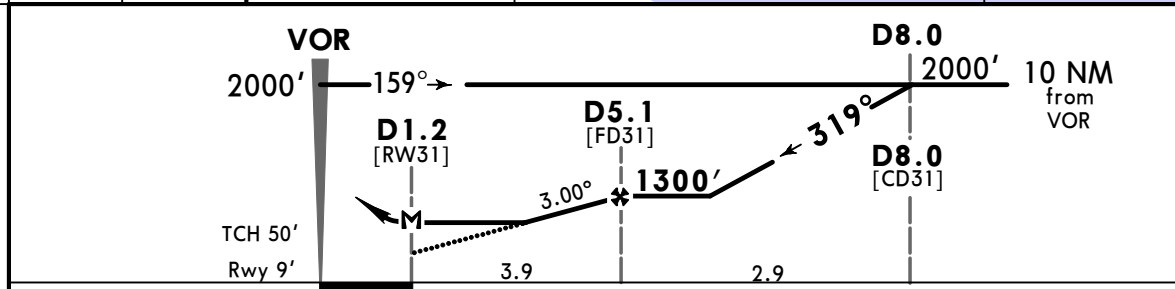
STRAIGHT-IN LANDING RWY 13			CIRCLE-TO-LAND		
MDA(H) 500'(491')			MDA(H)		
A	1	90	500'(490') - 1		
B		120	500'(490') - 1		
C	1¼	140	500'(490') - 1½		
D	1½	165	560'(550') - 2		

MMCE/CME CIUDAD DEL CARMEN INTL 2 AUG 24 13-4 Eff 8 Aug VOR Z Rwy 31

*ATIS 127.8		*CARMEN Approach 119.1		*CARMEN Tower 118.4	
VOR CME 113.0	Final Apch Crs 319°	D5.1 1300' (1291')	MDA(H) 440' (431')	Apt Elev 10' Rwy 9'	2000 MSA CME VOR
MISSED APCH: Climb outbound via CME VOR R-319 to D7.0, then turn RIGHT within 10 NM to CME VOR at the minimum holding altitude.					
Alt Set: IN (MB on req)		Trans level: FL 195		Trans alt: 18500'	
DME required.					



RECOMMENDED ALTITUDES	
CME DME	ALTITUDE
4.0	950'
3.0	630'



Gnd speed-Kts	70	90	100	120	140	160	PAPI-L	↑ via 113.0 R-319	CME D7.0
Descent Angle 3.00°	372	478	531	637	743	849			
MAP at D1.2									
D5.1 to MAP	3.9	3:21	2:36	2:20	1:57	1:40	1:28		

STRAIGHT-IN LANDING RWY 31			CIRCLE-TO-LAND		
MDA(H) 440' (431')			MDA(H)		
A	1	Max Kts			
B	1	90	500' (490') - 1		
C	1¼	140	500' (490') - 1½		
D	1½	165	560' (550') - 2		

MMCE/CME

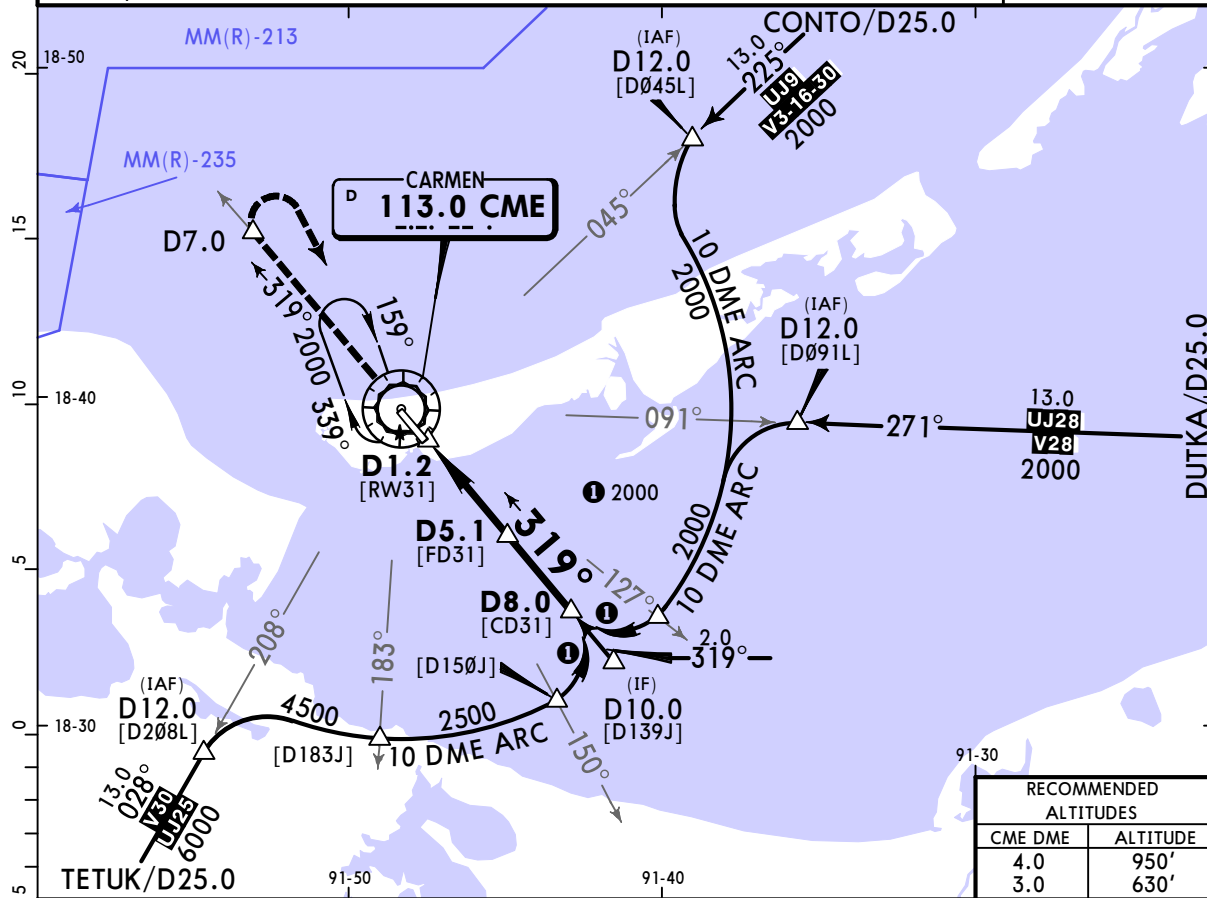
CIUDAD DEL CARMEN INTL

JEPPESEN CIUDAD DEL CARMEN, MEX

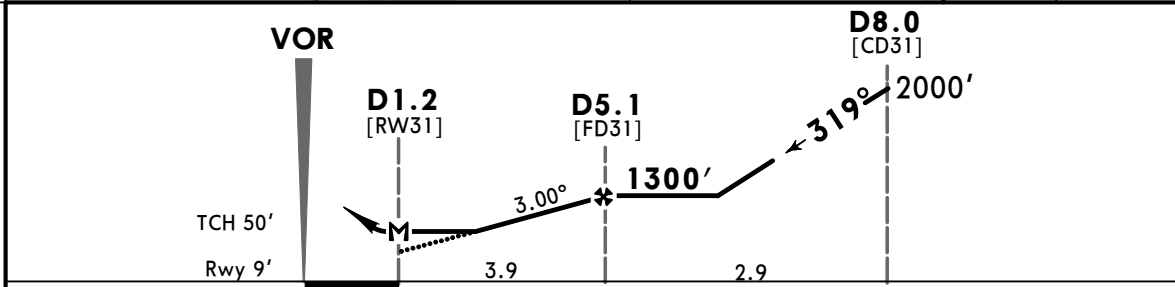
VOR Y Rwy 31

2 AUG 24 **13-5** Eff 8 Aug

*ATIS 127.8		*CARMEN Approach 119.1		*CARMEN Tower 118.4	
VOR CME 113.0	Final Apch Crs 319°	D5.1 1300' (1291')	MDA(H) 440' (431')	Apt Elev 10' Rwy 9'	2000 MSA CME VOR
MISSED APCH: Climb outbound via CME VOR R-319 to D7.0, then turn RIGHT within 10 NM to CME VOR at the minimum holding altitude.					
Alt Set: IN (MB on req)		Trans level: FL195		Trans alt: 18500'	
DME required.					



RECOMMENDED ALTITUDES	
CME DME	ALTITUDE
4.0	950'
3.0	630'



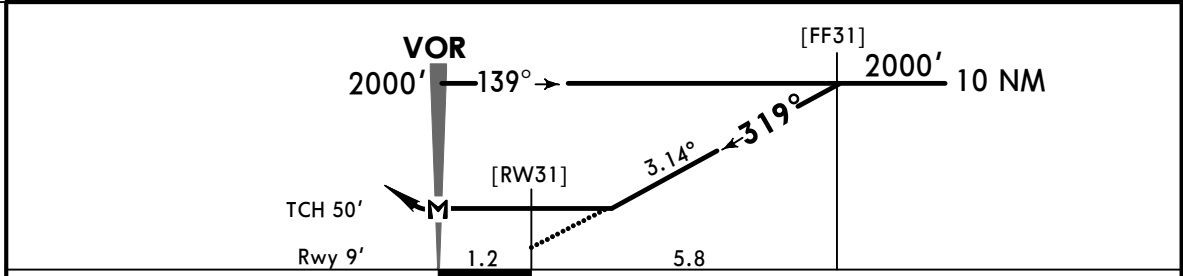
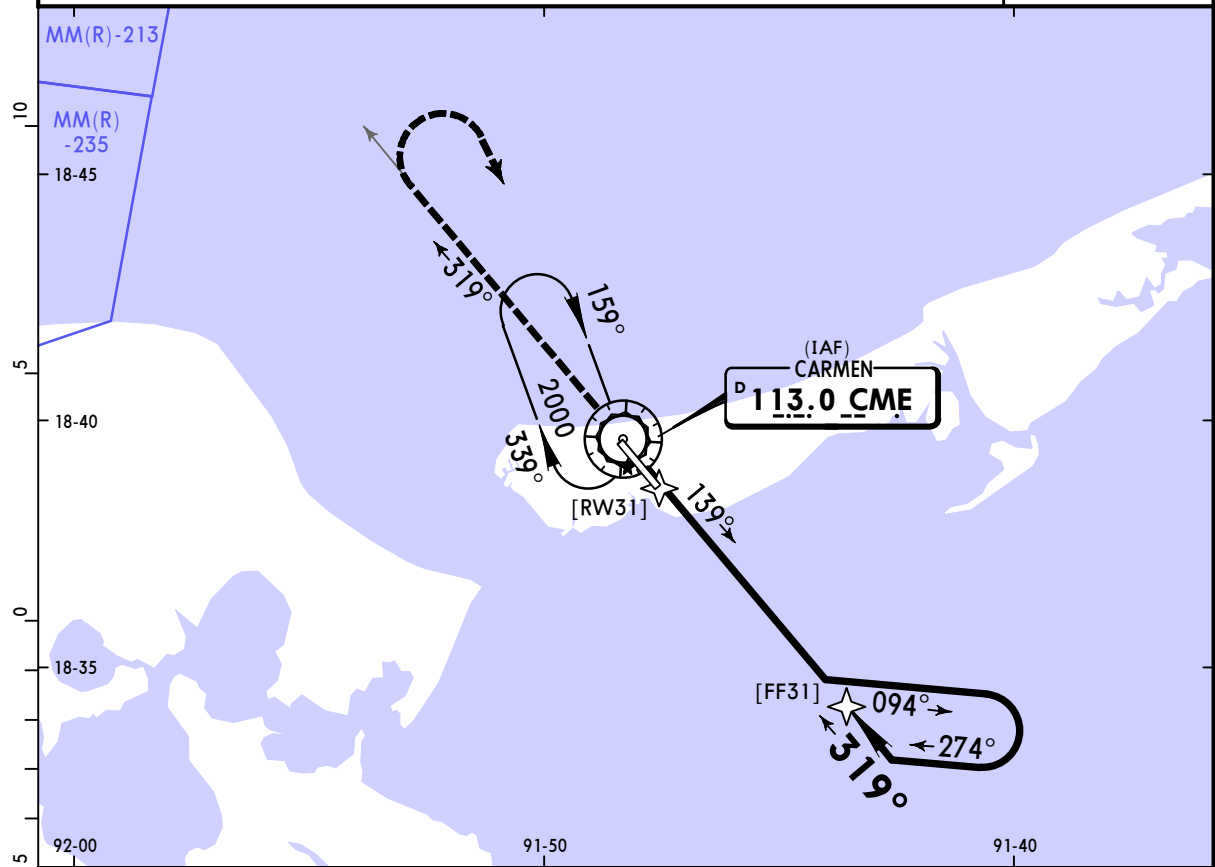
Gnd speed-Kts	70	90	100	120	140	160
Descent Angle 3.00°	372	478	531	637	743	849
MAP at D1.2						
D5.1 to MAP	3.9	3:21	2:36	2:20	1:57	1:40

PAPI-L CME **113.0** **D7.0**
via **R-319**

STRAIGHT-IN LANDING RWY 31		CIRCLE-TO-LAND	
MDA(H) 440' (431')		Max Kts	MDA(H)
A		90	500' (490') -1
B	1	120	500' (490') -1½
C	1¼	140	500' (490') -2
D	1½	165	560' (550') -2

MMCE/CME **JEPPESEN** **CIUDAD DEL CARMEN, MEX**
 CIUDAD DEL CARMEN INTL 2 AUG 24 (13-6) Eff 8 Aug VOR X Rwy 31

*ATIS 127.8		*CARMEN Approach 119.1			*CARMEN Tower 118.4																
VOR CME 113.0	Final Apch Crs 319°	No FAF	MDA(H) 500' (491')	Apt Elev 10' Rwy 9'		2000 MSA CME VOR															
MISSED APCH: Climb outbound via CME VOR R-319, then turn RIGHT within 10 NM to CME VOR at the minimum holding altitude.																					
MISSED APCH: Max Distance Outbound Track 7 NM <table border="1"> <tr> <td>Gnd speed-Kts</td> <td>80</td> <td>100</td> <td>120</td> <td>140</td> <td>160</td> <td>180</td> <td>200</td> </tr> <tr> <td>Time</td> <td>5:15</td> <td>4:12</td> <td>3:30</td> <td>3:00</td> <td>2:37</td> <td>2:20</td> <td>2:06</td> </tr> </table>							Gnd speed-Kts	80	100	120	140	160	180	200	Time	5:15	4:12	3:30	3:00	2:37	2:20
Gnd speed-Kts	80	100	120	140	160	180	200														
Time	5:15	4:12	3:30	3:00	2:37	2:20	2:06														
Alt Set: IN (MB on req)		Trans level: FL195		Trans alt: 18500'																	



Gnd speed-Kts	70	90	100	120	140	160	PAPI-L	CME via 113.0 R-319	RT within 10 NM	CME 113.0
Descent Angle	3.14°	389	500	556	667	778				
MAP at VOR										

STRAIGHT-IN LANDING RWY 31			CIRCLE-TO-LAND		
MDA(H) 500' (491')			MDA(H)		
A	1		Max Kts	90	
B	1		500'(490') - 1		
C	1¼		500'(490') - 1½		
D	1½		560'(550') - 2		