

## General Information

Location: CIUDAD VICTORIA MEX  
ICAO/IATA: MMCV / CVM  
Lat/Long: N23° 42.2', W098° 57.4'  
Elevation: 761 ft

Airport Use: Public  
Daylight Savings: Not Observed  
UTC Conversion: +6:00 = UTC  
Magnetic Variation: 6.0° E

Fuel Types: 100-130 Octane, Jet A-1  
Customs: Yes  
Airport Type: IFR  
Landing Fee: No  
Control Tower: Yes  
Jet Start Unit: No  
LLWS Alert: No  
Beacon: Yes

Sunrise: 1215 Z  
Sunset: 0102 Z

## Runway Information

Runway: 15  
Length x Width: 7218 ft x 148 ft  
Surface Type: asphalt  
TDZ-Elev: 756 ft  
Lighting: Edge

Runway: 33  
Length x Width: 7218 ft x 148 ft  
Surface Type: asphalt  
TDZ-Elev: 741 ft  
Lighting: Edge

## Communication Information

Victoria Tower: 118.200  
Victoria Approach: 125.425  
Monterrey Control ACC: 124.500 RCO  
Monterrey Control ACC: 125.425 RCO  
Mexico Control ACC: 126.600 RCO

Mexico Control ACC: 133.100 RCO

Victoria Information: 122.450

Mexico Control ACC: 123.900 RCO

TMA

24 NOV 23

10-1B

# CIUDAD VICTORIA, MEXICO

Gral Pedro Jose Mendez Intl



\*VICTORIA Approach  
125.42

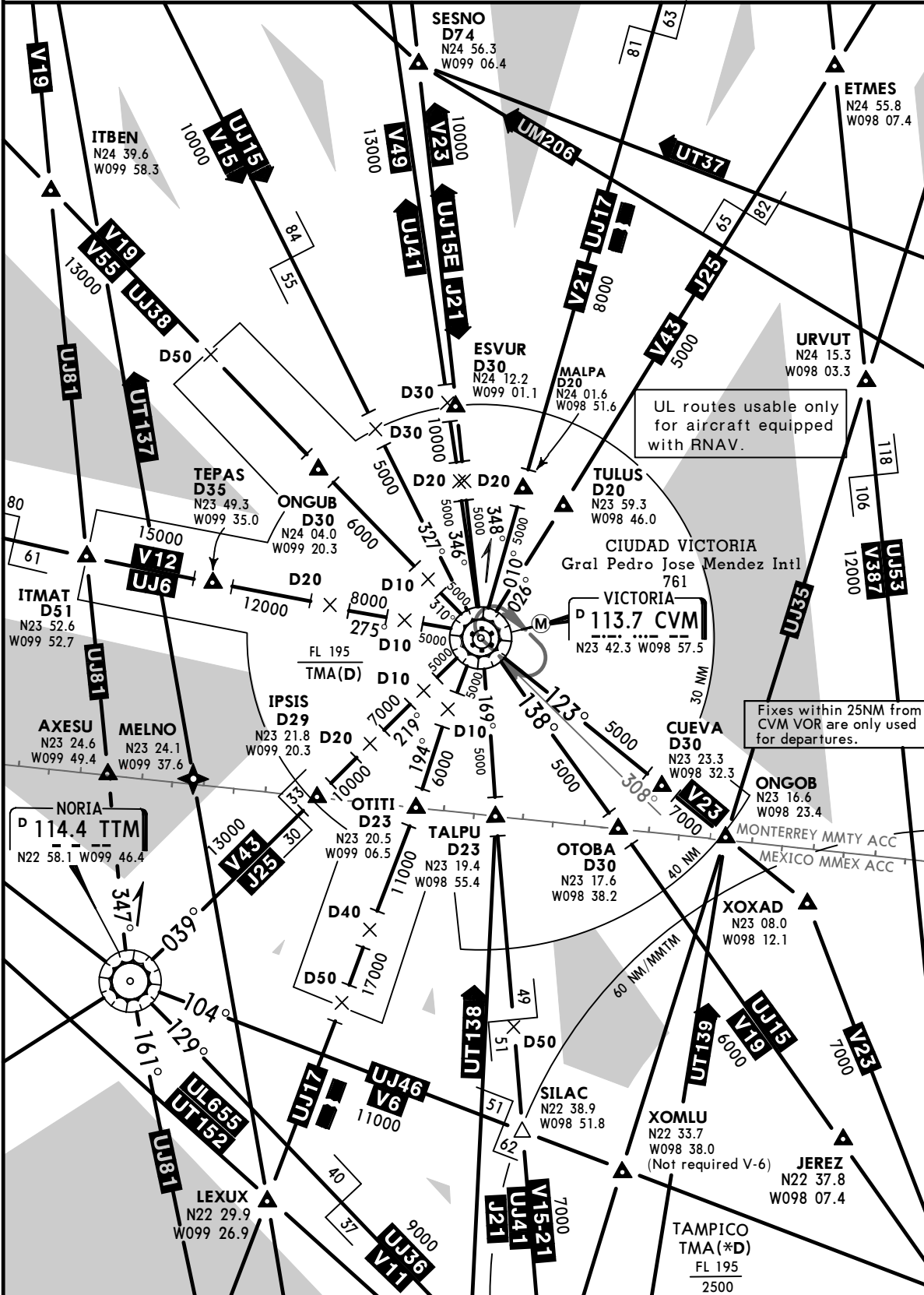
### SPEED RESTRICTIONS WITHIN MEXICO AIRSPACE

#### MAXIMUM IAS UNLESS OTHERWISE DEPICTED OF AUTHORIZED BY ATC

Below 3000' AGL within 10 NM of any airport.....	200 KTS
Below 10000' MSL within Mexico Airspace.....	250 KTS
Below 10000' AGL within 30 NM of any airport.....	250 KTS

#### WITHIN CIUDAD VICTORIA TMA

At or below 3800' MSL within 10 NM of CVM VORDME.....	200 KTS
At or below 10800' MSL within 30 NM of CVM VORDME.....	250 KTS

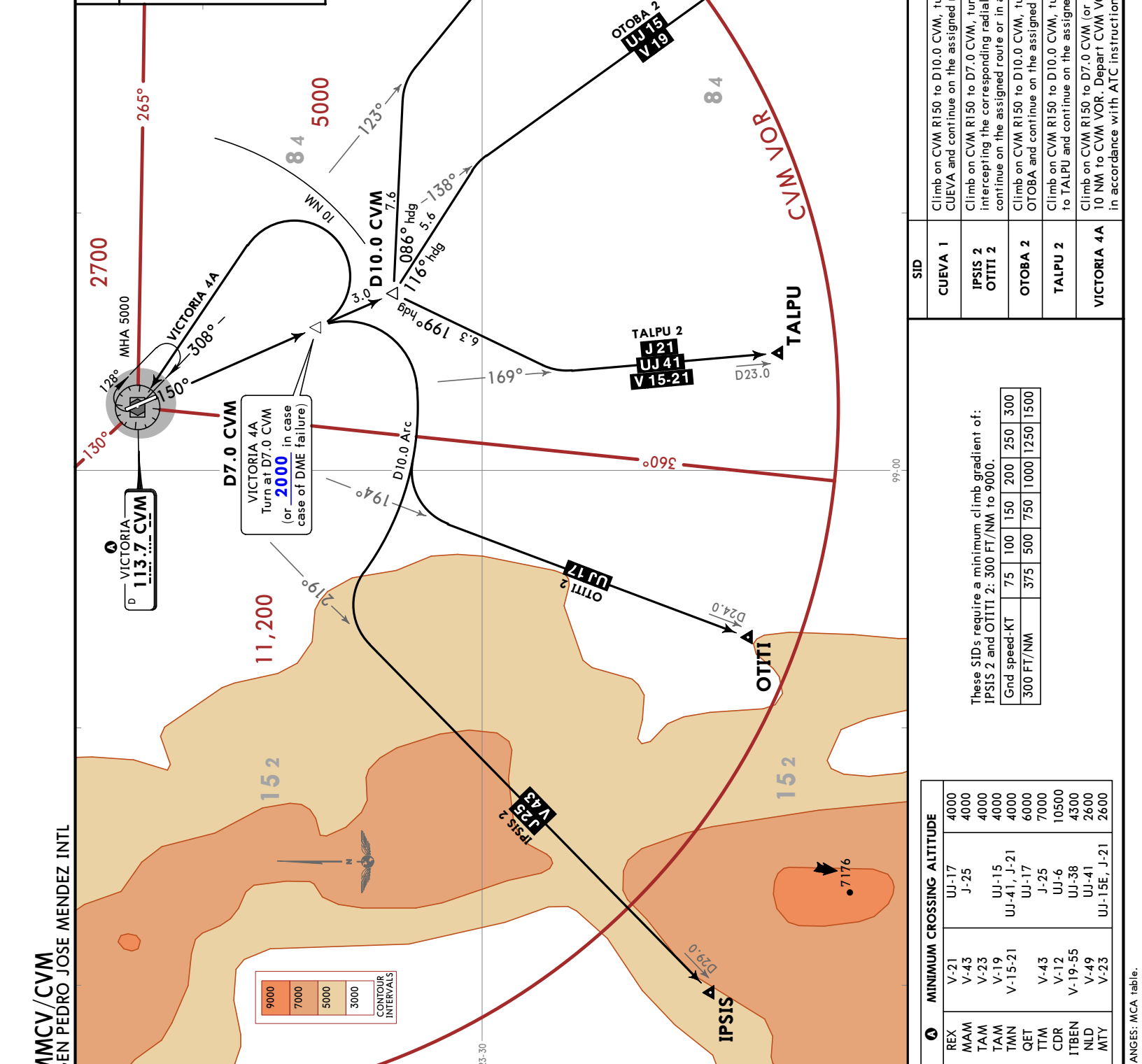


CHANGES: ATS system.

© JEPPESEN, 2007, 2023. ALL RIGHTS RESERVED.

**CIUDAD VICTORIA, MEXICO**  
**JEPPESEN**  
 15 MAR 24 10-3 Eff 21 Mar  
**SID**

Apt Elev 761 Trans alt: 18500  
**CUEVA 1 (CUEVA1)**  
**IPSI 2 (IPSI2)**  
**OTITI 2 (OTITI2)**  
**OTOBA 2 (OTOBA2)**  
**TALPU 2 (TALPU2)**  
**VICTORIA 4A (CVM4A)**  
**DEPARTURES (RWY 15)**



MMCV/CVM GEN PEDRO JOSE MENDEZ INTL

**MINIMUM CROSSING ALTITUDE**

REX	V-21	4000
MAM	V-43	4000
TAM	V-23	4000
TAM	V-19	4000
TMN	V-15-21	4000
QET	UJ-17	6000
TTM	J-25	7000
CDR	V-12	10500
ITBEN	V-19-55	4300
NLD	V-49	2600
MTY	V-23	2600
	UJ-15E, J-21	2600

These SIDs require a minimum climb gradient of:  
 IPSI 2 and OTITI 2: 300 FT/NM to 9000.  
 Gnd speed-KT 75 100 150 200 250 300  
 300 FT/NM 375 500 750 1000 1250 1500

**SID**

CUEVA 1
IPSI 2 OTITI 2
OTOBA 2
TALPU 2
VICTORIA 4A

**INITIAL CLIMB**  
 Climb on CVM R150 to D10.0 CVM, turn LEFT heading 086° and intercept CVM R123 to CUEVA and continue on the assigned route or in accordance with ATC instructions.  
 Climb on CVM R150 to D7.0 CVM, turn RIGHT and proceed on the D10.0 Arc CVM until intercepting the corresponding radial from CVM VOR to either OTITI or IPSI and continue on the assigned route or in accordance with ATC instructions.  
 Climb on CVM R150 to D10.0 CVM, turn LEFT heading 116° and intercept CVM R138 to OTOBA and continue on the assigned route or in accordance with ATC instructions.  
 Climb on CVM R150 to D10.0 CVM, turn RIGHT heading 99° and intercept CVM R169 to TALPU and continue on the assigned route or in accordance with ATC instructions.  
 Climb on CVM R150 to D7.0 CVM (or 2000 in case of DME failure), turn LEFT within 10 NM to CVM VOR. Depart CVM VOR at the published MCA for the assigned route or in accordance with ATC instructions.

**CIUDAD VICTORIA, MEXICO**

**MMCV/CVM**  
GEN PEDRO JOSE MENDEZ INTL

**JEPPESEN**  
15 MAR 24 (10-3A) Eff 21 Mar

**SID**

Apt Elev  
761  
Trans alt: 18500

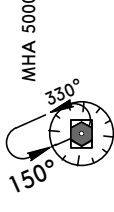
**ESVUR 1 (ESVUR1)**  
**MALPA 2 (MALPA2)**  
**ONGUB 1 (ONGUB1)**  
**TEPAS 2 (TEPAS2)**  
**TULUS 2 (TULUS2)**  
**VICTORIA 4B (CVM4B)**  
DEPARTURES  
(RWY 33)

MINIMUM CROSSING ALTITUDE		
REX	V-21	UJ-17 4000
MAM	V-43	J-25 4000
TAM	V-23	
TAM	V-19	UJ-15 4000
TMN	V-15-21	UJ-41, J-21 4000
GET		UJ-17 6000
TTM	V-43	J-25 7000
CDR	V-12	UJ-6 10500
ITBEN	V-19-55	UJ-38 4300
NLD	V-49	UJ-41 2600
MTY	V-23	UJ-19E, J-21 2600

This SID requires a minimum climb gradient of:  
TEPAS 2: 350 FT/NM to 14000.

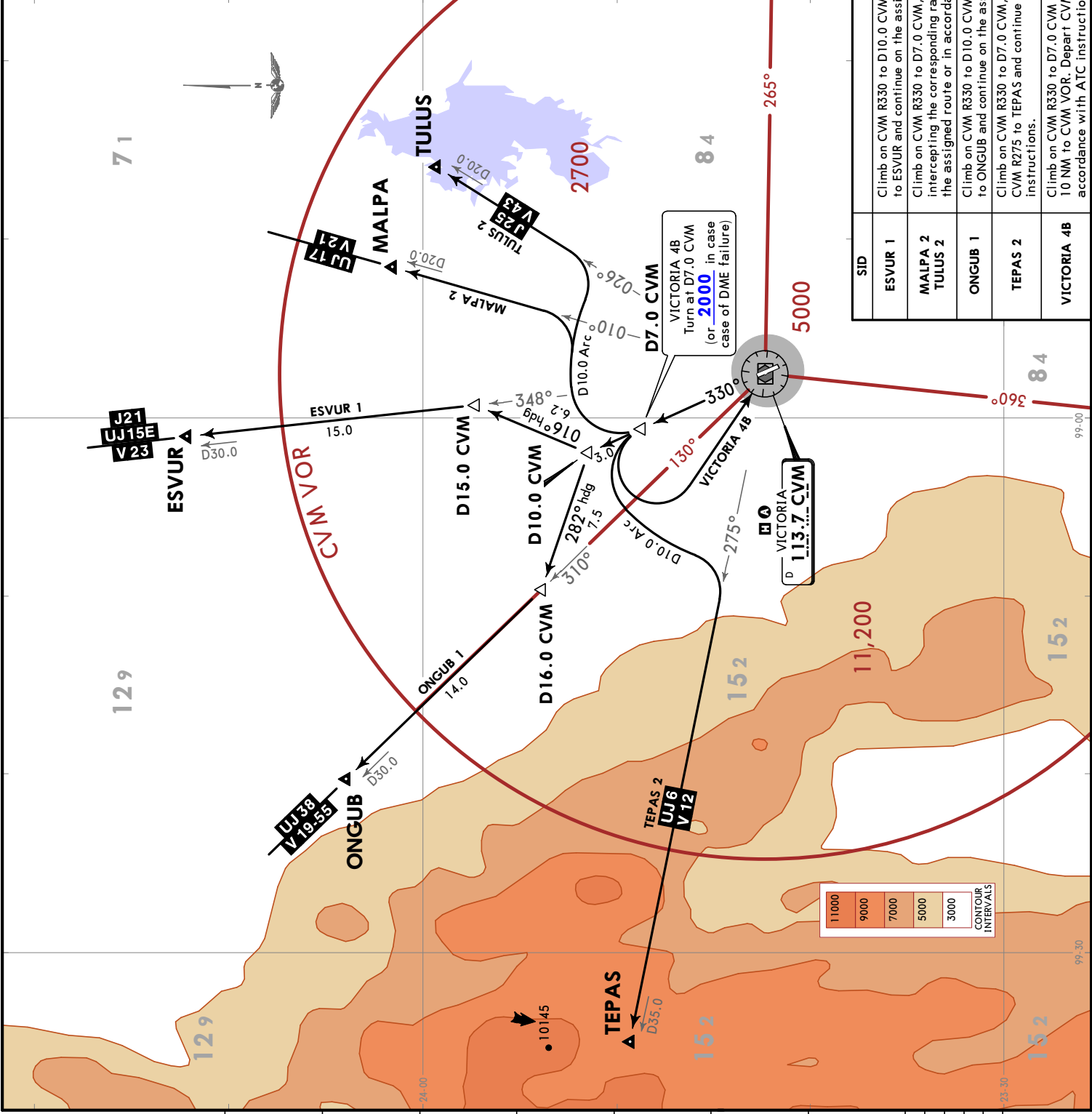
Gnd speed-KT	75	100	150	200	250	300
350 FT/NM	438	583	875	1167	1458	1750

**CVM VOR**



**INITIAL CLIMB**

SID	INITIAL CLIMB
<b>ESVUR 1</b>	Climb on CVM R330 to D10.0 CVM, turn RIGHT heading 016° and intercept CVM R348 to ESVUR and continue on the assigned route or in accordance with ATC instructions.
<b>MALPA 2</b> <b>TULUS 2</b>	Climb on CVM R330 to D7.0 CVM, turn RIGHT and follow the D10.0 Arc CVM until intercepting the corresponding radial to either MALPA or TULUS, then continue on the assigned route or in accordance with ATC instructions.
<b>ONGUB 1</b>	Climb on CVM R330 to D10.0 CVM, turn LEFT heading 282° and intercept CVM R310 to ONGUB and continue on the assigned route or in accordance with ATC instructions.
<b>TEPAS 2</b>	Climb on CVM R330 to D7.0 CVM, turn LEFT and follow the D10.0 Arc CVM and intercept CVM R275 to TEPAS and continue on the assigned route or in accordance with ATC instructions.
<b>VICTORIA 4B</b>	Climb on CVM R330 to D7.0 CVM (or 2000 in case of DME failure), turn LEFT within 10 NM to CVM VOR. Depart CVM VOR at the MCA for the assigned route or in accordance with ATC instructions.

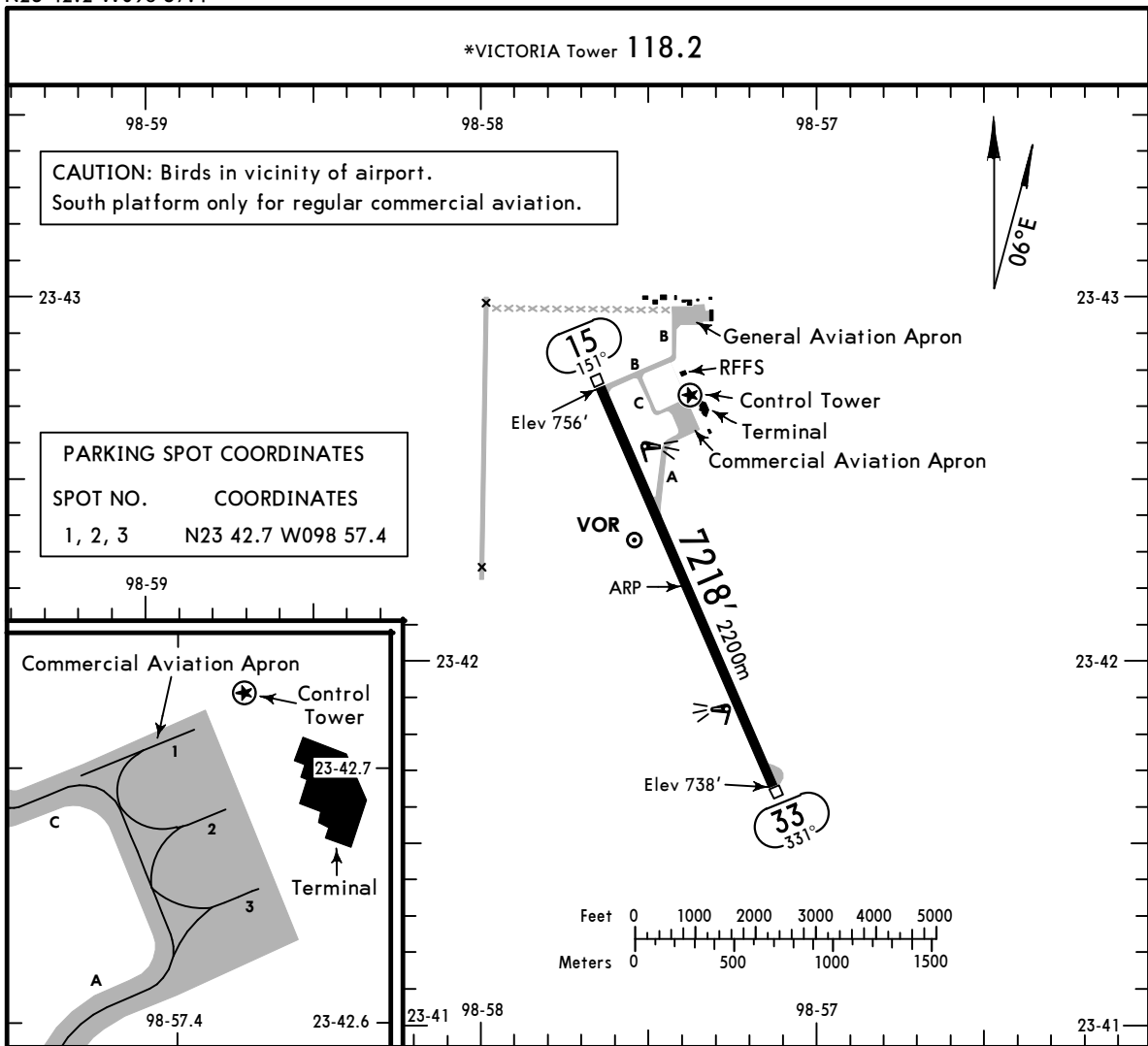


MMCV/CVM

Apt Elev **761'**  
N23 42.2 W098 57.4

**JEPPESEN** CIUDAD VICTORIA, MEXICO  
7 JUL 23  
Eff 13 Jul (10-9)

GEN PEDRO JOSE MENDEZ INTL



ADDITIONAL RUNWAY INFORMATION

RWY	USABLE LENGTHS	WIDTH
15 33	HIRL (60m) ① PAPI-L (angle 3.0°)	148' 45m

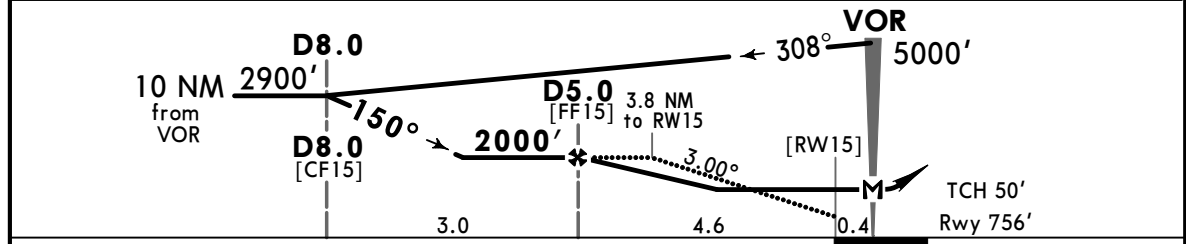
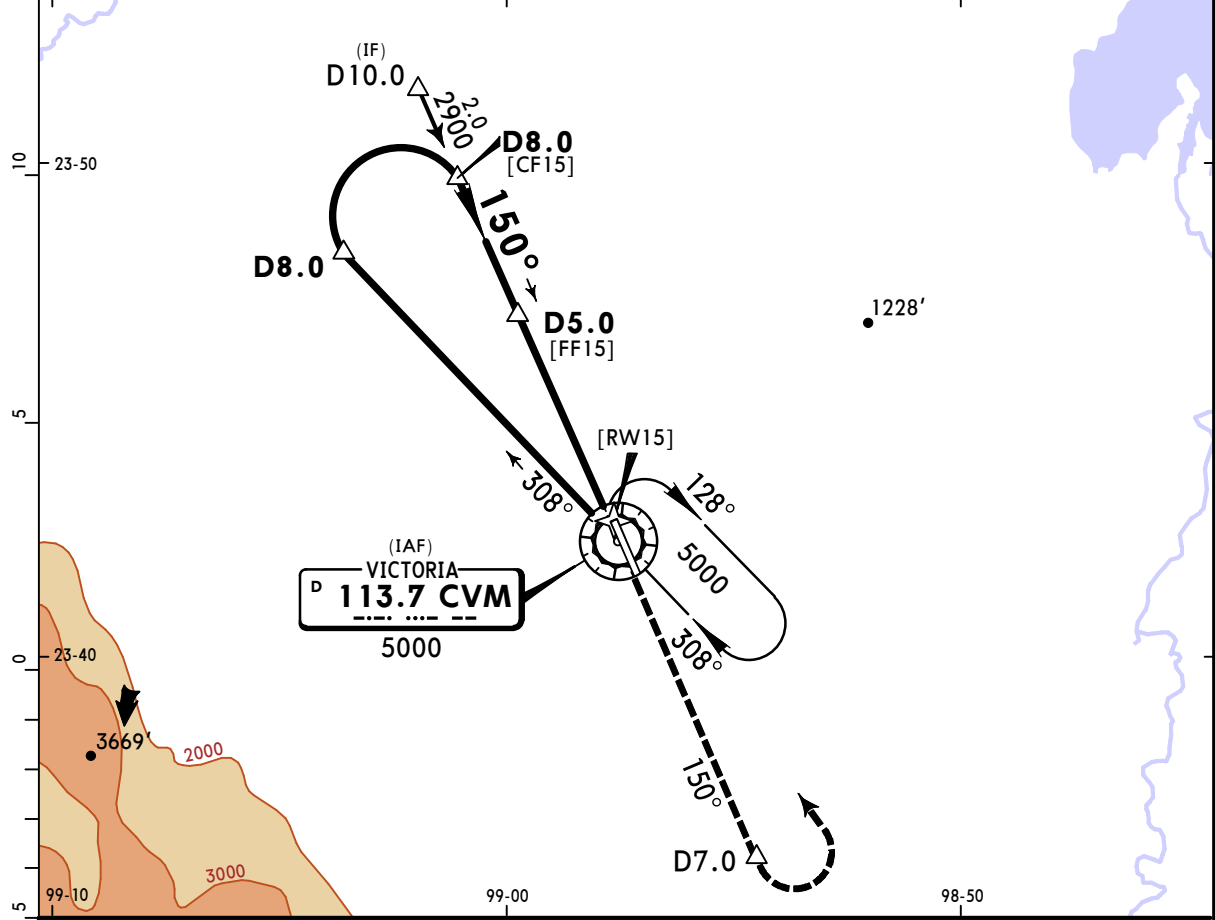
① On request in IFR conditions.

TAKE-OFF & DEPARTURE PROCEDURE		FOR FILING AS ALTERNATE	
Rwys 15, 33		1000-3	
1 & 2 Eng	300-1		
3 & 4 Eng	300-1/2		

For departure procedures and MCA's see Ciudad Victoria SIDs.

**MMCV/CVM** **JEPPESEN** **CIUDAD VICTORIA, MEXICO**  
**GEN PEDRO JOSE MENDEZ INTL** 7 JUL 23 **(13-1)** **Eff 13 Jul** **VOR DME 1 Rwy 15**

*VICTORIA Approach				*VICTORIA Tower		
125.425				118.2		
VOR CVM <b>113.7</b>	Final Apch Crs <b>150°</b>	D5.0 <b>2000'</b> (1244')	MDA(H) <b>1240'</b> (484')	Apt Elev 761' Rwy 756'		
<b>MISSED APCH: Climb via CVM VOR R-150 to D7.0, then turn LEFT within 10 NM to CVM VOR to the minimum holding altitude.</b>						
Alt Set: IN (MB on req)		Rwy Elev: 27 MB	Trans level: FL 195	Trans alt: 18500'		
						MSA CVM VOR



Gnd speed-Kts	70	90	100	120	140	160			
Descent Angle 3.00°	372	478	531	637	743	849			
MAP at VOR									

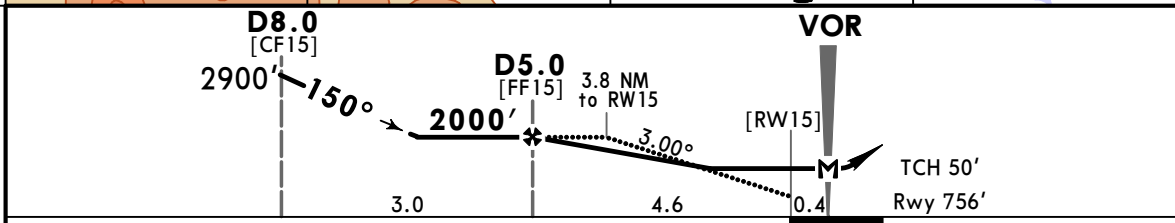
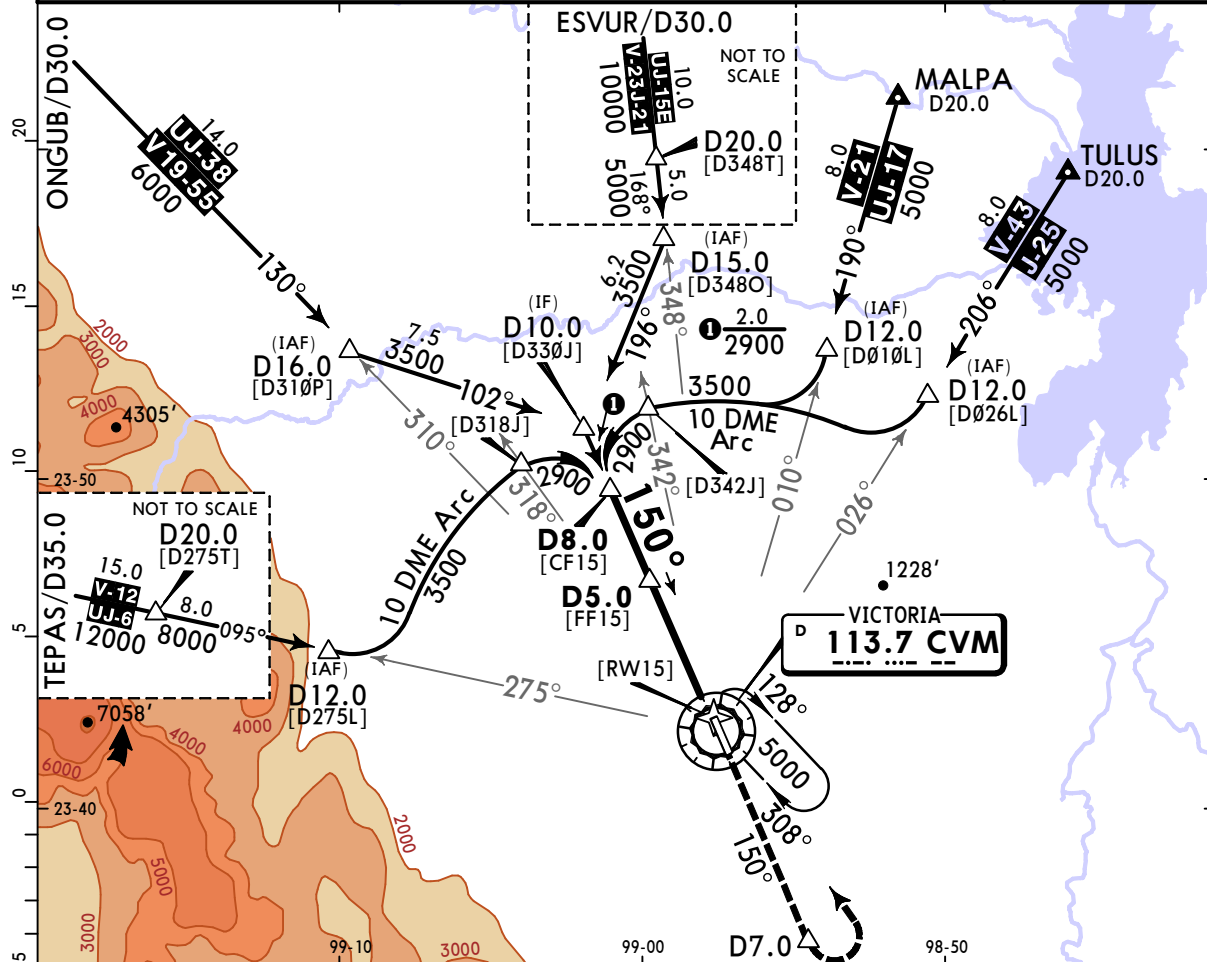
STRAIGHT-IN LANDING RWY 15				CIRCLE-TO-LAND			
MDA(H) <b>1240'</b> (484')							
				Max Kts	MDA(H)		
A	1			90	1300' (539') - 1		
B	1 1/4			120	1300' (539') - 1 1/2		
C	1 1/2			140	1340' (579') - 2		
D				165			

# MMCV/CVM

## GEN PEDRO JOSE MENDEZ INTL

7 JUL 23 **(13-2)** Eff 13 Jul VOR DME 2 Rwy 15

*VICTORIA Approach				*VICTORIA Tower		
125.425				118.2		
VOR CVM <b>113.7</b>	Final Apch Crs <b>150°</b>	D5.0 <b>2000'</b> (1244')	MDA(H) <b>1240'</b> (484')	Apt Elev 761'	Rwy 756'	
<b>MISSED APCH:</b> Climb via CVM VOR R-150 to D7.0, then turn LEFT within 10 NM to CVM VOR to the minimum holding altitude.						
Alt Set: IN (MB on req)		Rwy Elev: 27 MB	Trans level: FL 195	Trans alt: 18500'		MSA CVM VOR



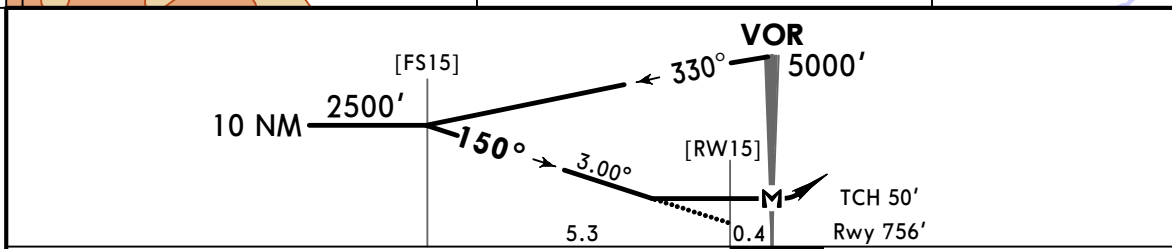
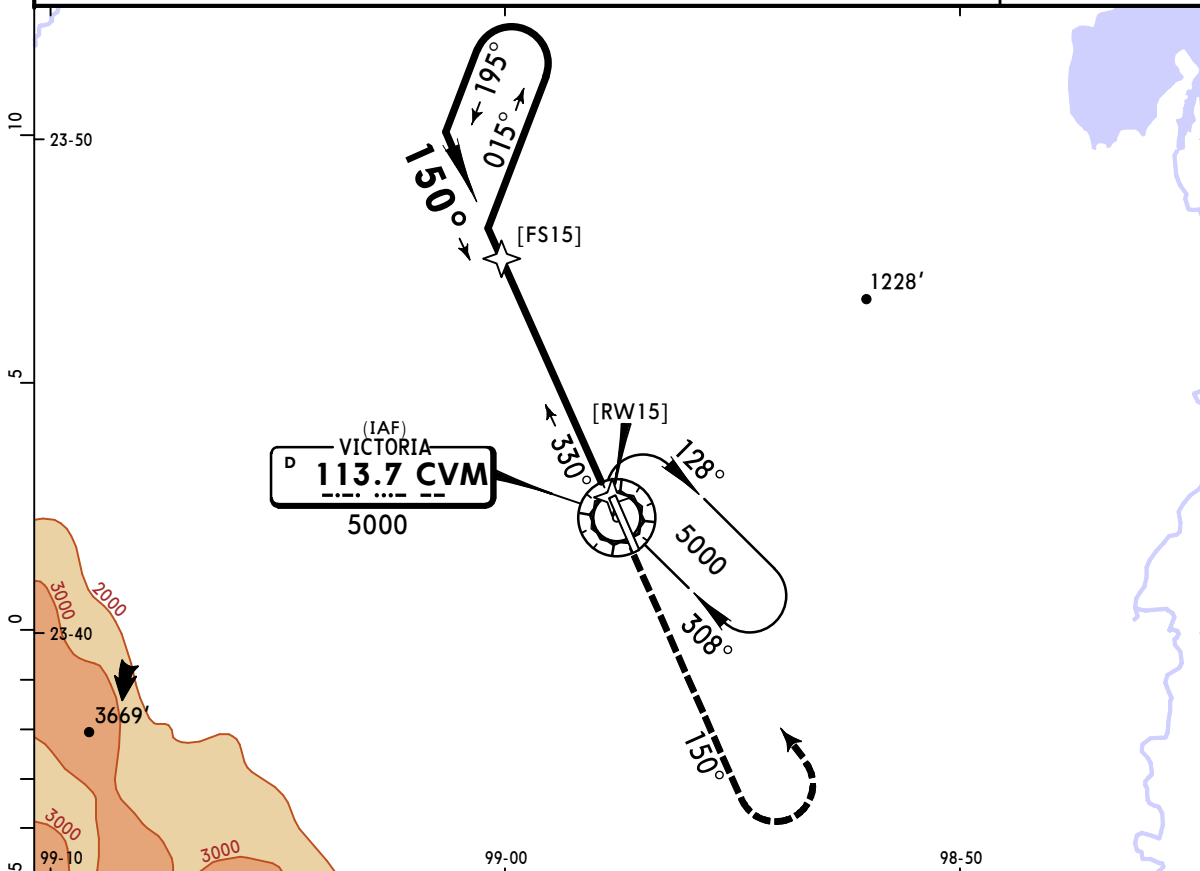
Gnd speed-Kts	70	90	100	120	140	160	PAPI-L	CVM on 113.7 R-150	D7.0
Descent Angle 3.00°	372	478	531	637	743	849			

STRAIGHT-IN LANDING RWY 15				CIRCLE-TO-LAND			
MDA(H) <b>1240'</b> (484')				MDA(H)			
A	1			Max Kts	90		
B	1			120	1300' (539') - 1		
C	1 1/4			140	1300' (539') - 1 1/2		
D	1 1/2			165	1340' (579') - 2		



# MMCV/CVM GEN PEDRO JOSE MENDEZ INTL 7 JUL 23 (13-3) Eff 13 Jul VOR Rwy 15

*VICTORIA Approach				*VICTORIA Tower			
125.425				118.2			
VOR CVM <b>113.7</b>	Final Apch Crs <b>150°</b>	No FAF	MDA(H) <b>1300'</b> (544')	Apt Elev 761'		Rwy 756'	
<b>MISSED APCH:</b> Climb via CVM VOR R-150, then turn LEFT within 10 NM to CVM VOR to the minimum holding altitude.							
MISSED APCH: Max Distance Outbound Track 7 NM							
Gnd speed-Kts	80	100	120	140	160	180	
Time	5:15	4:12	3:30	3:00	2:38	2:20	2:06
Alt Set: IN (MB on req)		Rwy Elev: 27 MB	Trans level: FL 195		Trans alt: 18500'		MSA CVM VOR

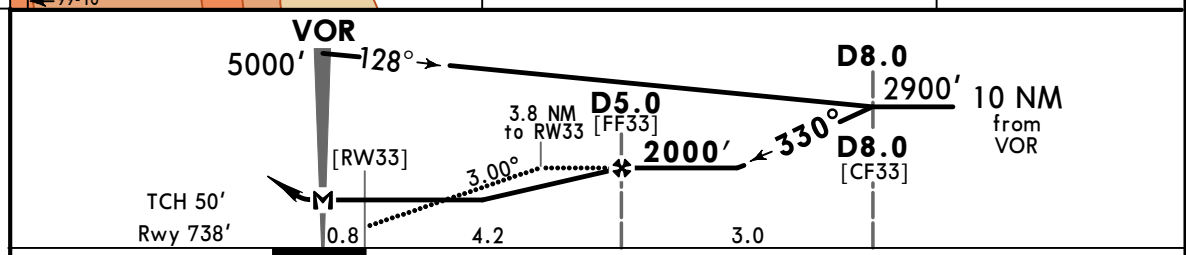
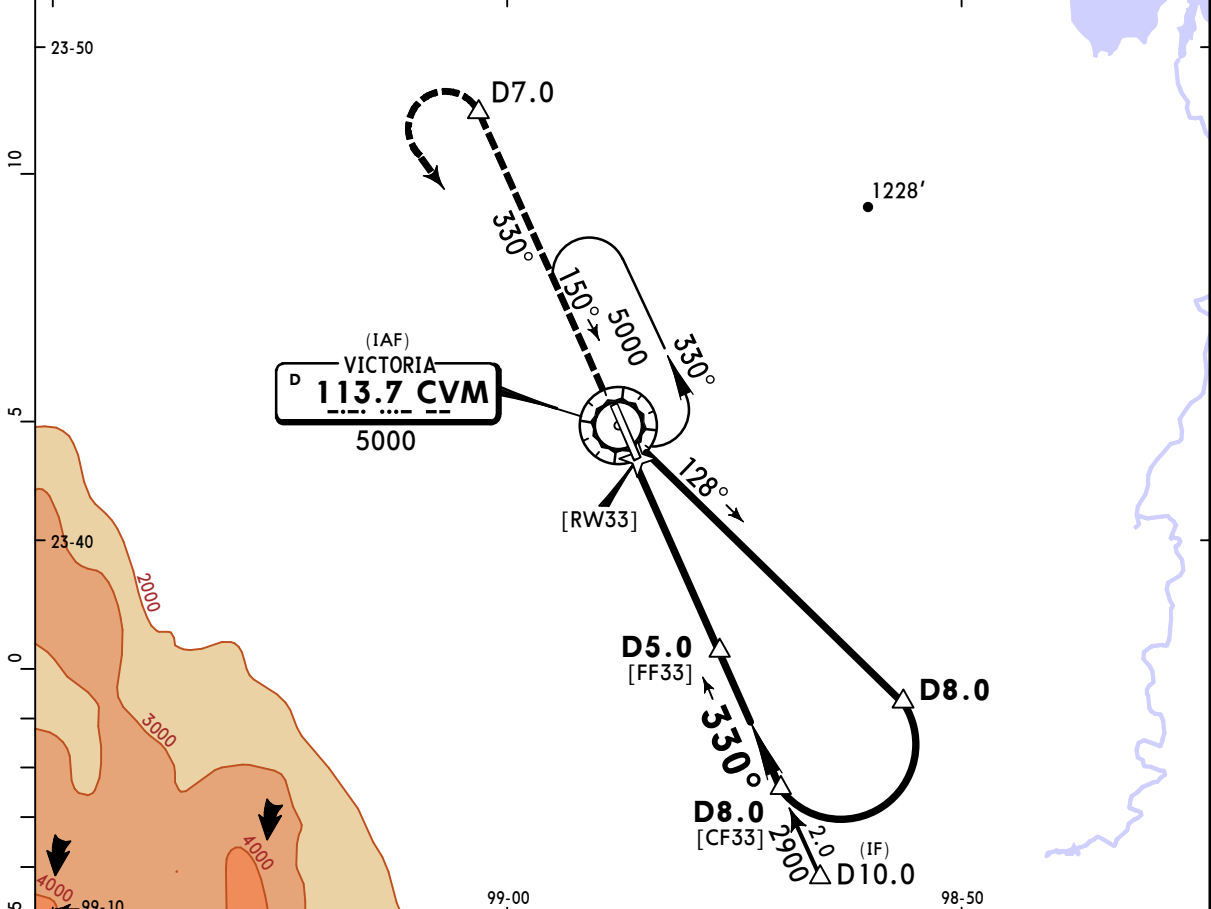


Gnd speed-Kts	70	90	100	120	140	160	PAPI-L	↑ on <b>113.7</b> <b>R-150</b>
Descent Angle 3.00°	372	478	531	637	743	849		
MAP at VOR								

STRAIGHT-IN LANDING RWY 15				CIRCLE-TO-LAND			
MDA(H) <b>1300'</b> (544')							
				Max Kts	MDA(H)		
A	1			90	1300' (539') - 1		
B	1 1/2			120	1300' (539') - 1 1/2		
C	1 3/4			140	1300' (539') - 1 3/4		
D	2			165	1340' (579') - 2		

# MMCV/CVM GEN PEDRO JOSE MENDEZ INTL **13-4** 7 JUL 23 Eff 13 Jul VOR DME 1 Rwy 33

*VICTORIA Approach				*VICTORIA Tower		
125.425				118.2		
VOR CVM <b>113.7</b>	Final Apch Crs <b>330°</b>	D5.0 <b>2000'</b> (1262')	MDA(H) <b>1220'</b> (482')	Apt Elev 761'	Rwy 738'	
<b>MISSED APCH: Climb via CVM VOR R-330 to D7.0, then turn LEFT within 10 NM to CVM VOR to the minimum holding altitude.</b>						
Alt Set: IN (MB on req)		Trans level: FL 195		Trans alt: 18500'		MSA CVM VOR

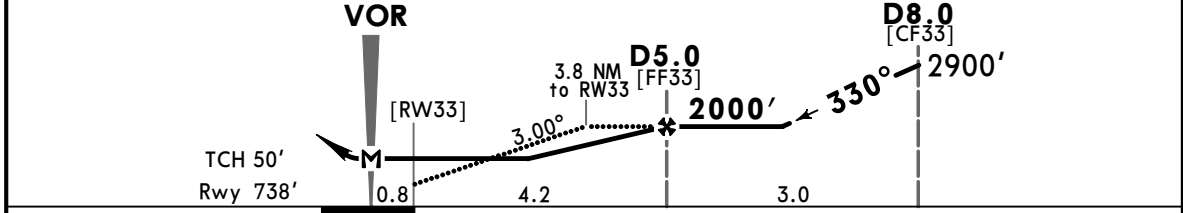
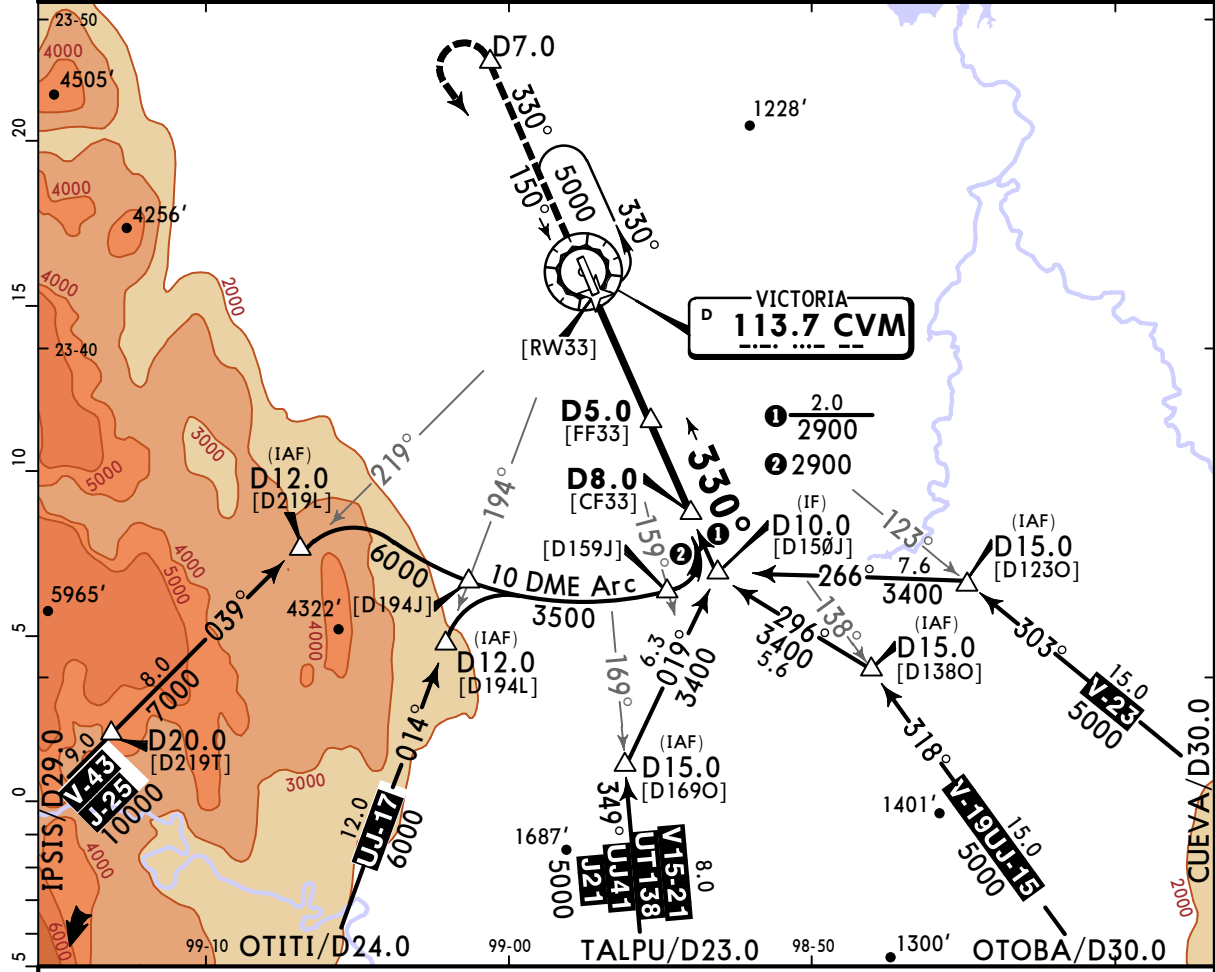


Gnd speed-Kts	70	90	100	120	140	160	PAPI-L	CVM on <b>113.7</b> <b>R-330</b>	<b>D7.0</b>
Descent Angle 3.00°	372	478	531	637	743	849			
MAP at VOR									

STRAIGHT-IN LANDING RWY33			CIRCLE-TO-LAND		
MDA(H) <b>1220'</b> (482')			MDA(H)		
A	1		Max Kts		
B	1		90	<b>1300'</b> (539') - 1	
C	1¼		120	<b>1300'</b> (539') - 1½	
D	1½		140	<b>1300'</b> (539') - 1½	
			165	<b>1340'</b> (579') - 2	

# MMCV/CVM GEN PEDRO JOSE MENDEZ INTL (13-5) 7 JUL 23 Eff 13 Jul JEPPESEN CIUDAD VICTORIA, MEXICO VOR DME 2 Rwy 33

*VICTORIA Approach				*VICTORIA Tower		
125.425				118.2		
VOR CVM <b>113.7</b>	Final Apch Crs <b>330°</b>	D5.0 <b>2000'</b> (1262')	MDA(H) <b>1220'</b> (482')	Apt Elev 761' Rwy 738'		
<b>MISSED APCH: Climb via CVM VOR R-330 to D7.0, then turn LEFT within 10 NM to CVM VOR to the minimum holding altitude.</b>						
Alt Set: IN (MB on req)		Trans level: FL 195		Trans alt: 18500'		MSA CVM VOR

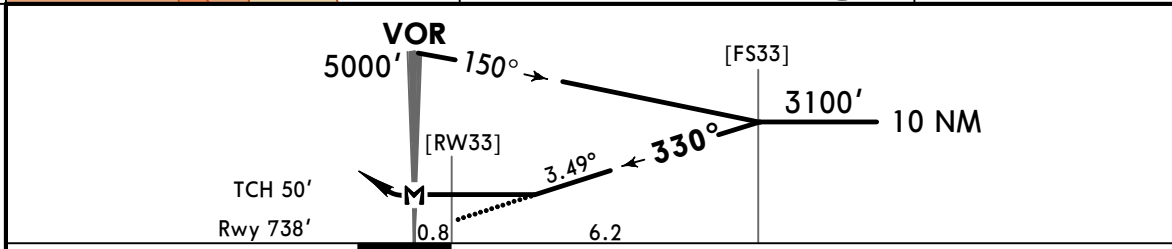
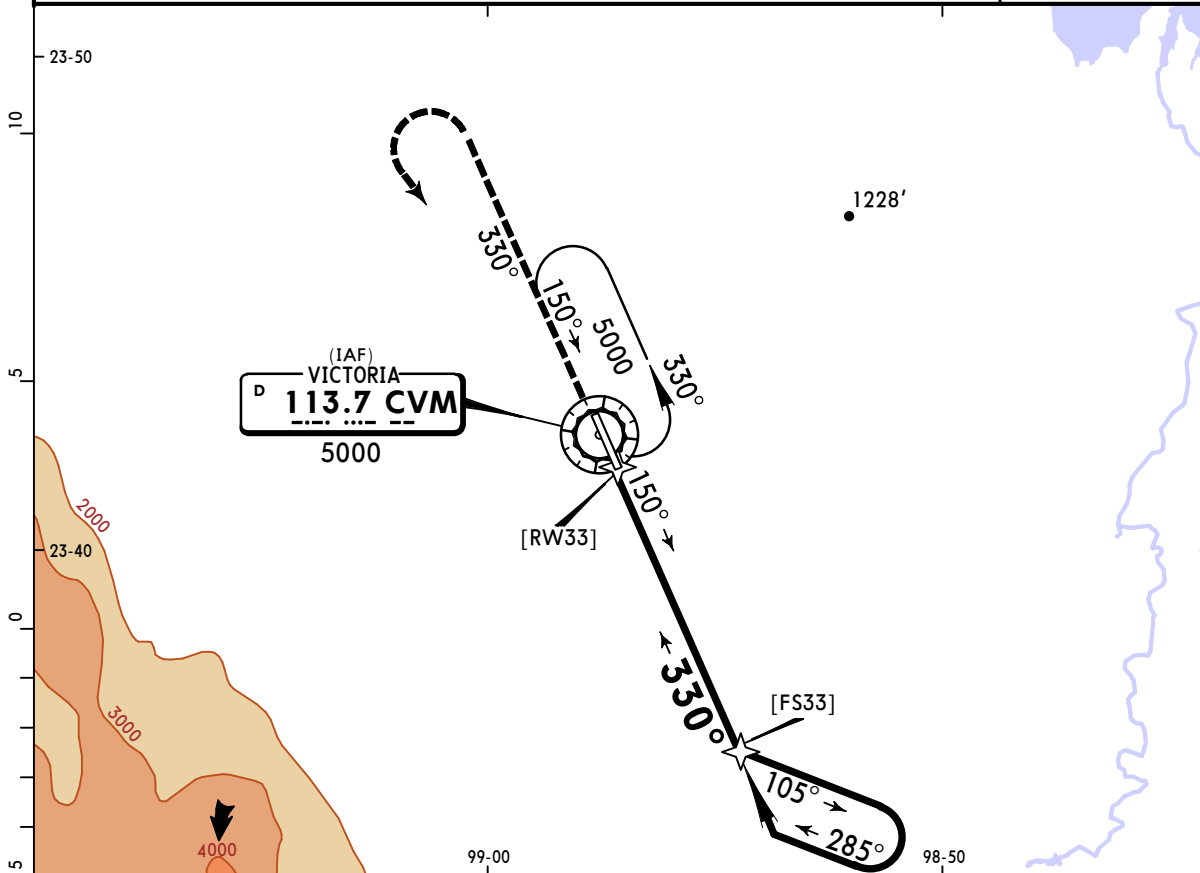


Gnd speed-Kts	70	90	100	120	140	160	PAPI-L	↑ on <b>113.7</b> <b>R-330</b>	<b>CVM</b> <b>D7.0</b>
Descent Angle	3.00°	372	478	531	637	743			

STRAIGHT-IN LANDING RWY33		CIRCLE-TO-LAND	
MDA(H) <b>1220'</b> (482')		MDA(H)	
A	1	Max Kts	90
B	1	120	1300' (539') - 1
C	1 1/4	140	1300' (539') - 1 1/2
D	1 1/2	165	1340' (579') - 2

# MMCV/CVM GEN PEDRO JOSE MENDEZ INTL 7 JUL 23 (13-6) Eff 13 Jul VOR Rwy 33

*VICTORIA Approach				*VICTORIA Tower			
125.425				118.2			
VOR CVM <b>113.7</b>	Final Apch Crs <b>330°</b>	No FAF	MDA(H) <b>1260'</b> (522')	Apt Elev 761'	Rwy 738'		
<b>MISSED APCH: Climb via CVM VOR R-330, then turn LEFT within 10 NM to CVM VOR to the minimum holding altitude.</b>							
MISSED APCH: Max Distance Outbound Track 7 NM							
Gnd speed-Kts	80	100	120	140	160	180	
Time	5:15	4:12	3:30	3:00	2:38	2:20	2:06
Alt Set: IN (MB on req)		Rwy Elev: 27 MB	Trans level: FL 195	Trans alt: 18500'			MSA CVM VOR



Gnd speed-Kts	70	90	100	120	140	160	PAPI-L	CVM on <b>113.7</b> <b>R-330</b>
Descent Angle	3.49°	432	556	618	741	865		
MAP at VOR								

STRAIGHT-IN LANDING RWY 33			CIRCLE-TO-LAND		
MDA(H) <b>1260'</b> (522')			MDA(H)		
A	B	C	D	Max Kts	
	1			90	<b>1300'</b> (539') - 1
	1½			120	<b>1300'</b> (539') - 1½
	1¾			140	<b>1300'</b> (539') - 1¾
				165	<b>1340'</b> (579') - 2