

General Information

Location: CIUDAD JUAREZ MEX
ICAO/IATA: MMCS / CJS
Lat/Long: N31° 38.2', W106° 25.7'
Elevation: 3904 ft

Airport Use: Public
Daylight Savings: Not Observed
UTC Conversion: +7:00 = UTC
Magnetic Variation: 10.0° E
Sectional Chart: El Paso

Fuel Types: 100-130 Octane, Jet A
Customs: Yes
Airport Type: IFR
Landing Fee: No
Control Tower: Yes
Jet Start Unit: No
LLWS Alert: No
Beacon: Yes

Sunrise: 1230 Z
Sunset: 0151 Z

Runway Information

Runway: 03
Length x Width: 8858 ft x 148 ft
Surface Type: asphalt
TDZ-Elev: 3891 ft
Lighting: Edge, ALS

Runway: 15
Length x Width: 5610 ft x 98 ft
Surface Type: asphalt
TDZ-Elev: 3904 ft

Runway: 21
Length x Width: 8858 ft x 148 ft
Surface Type: asphalt
TDZ-Elev: 3888 ft
Lighting: Edge

Runway: 33
Length x Width: 5610 ft x 98 ft

Surface Type: asphalt
TDZ-Elev: 3898 ft

Communication Information

Juarez Tower: 118.900
Juarez Approach: 119.900
Monterrey Control ACC: 125.600 RCO

TMA

JEPPesen

19 JUL 24

10-1B

CIUDAD JUAREZ, MEXICO
ABRAHAM GONZALEZ INTL

*JUAREZ Approach
119.9

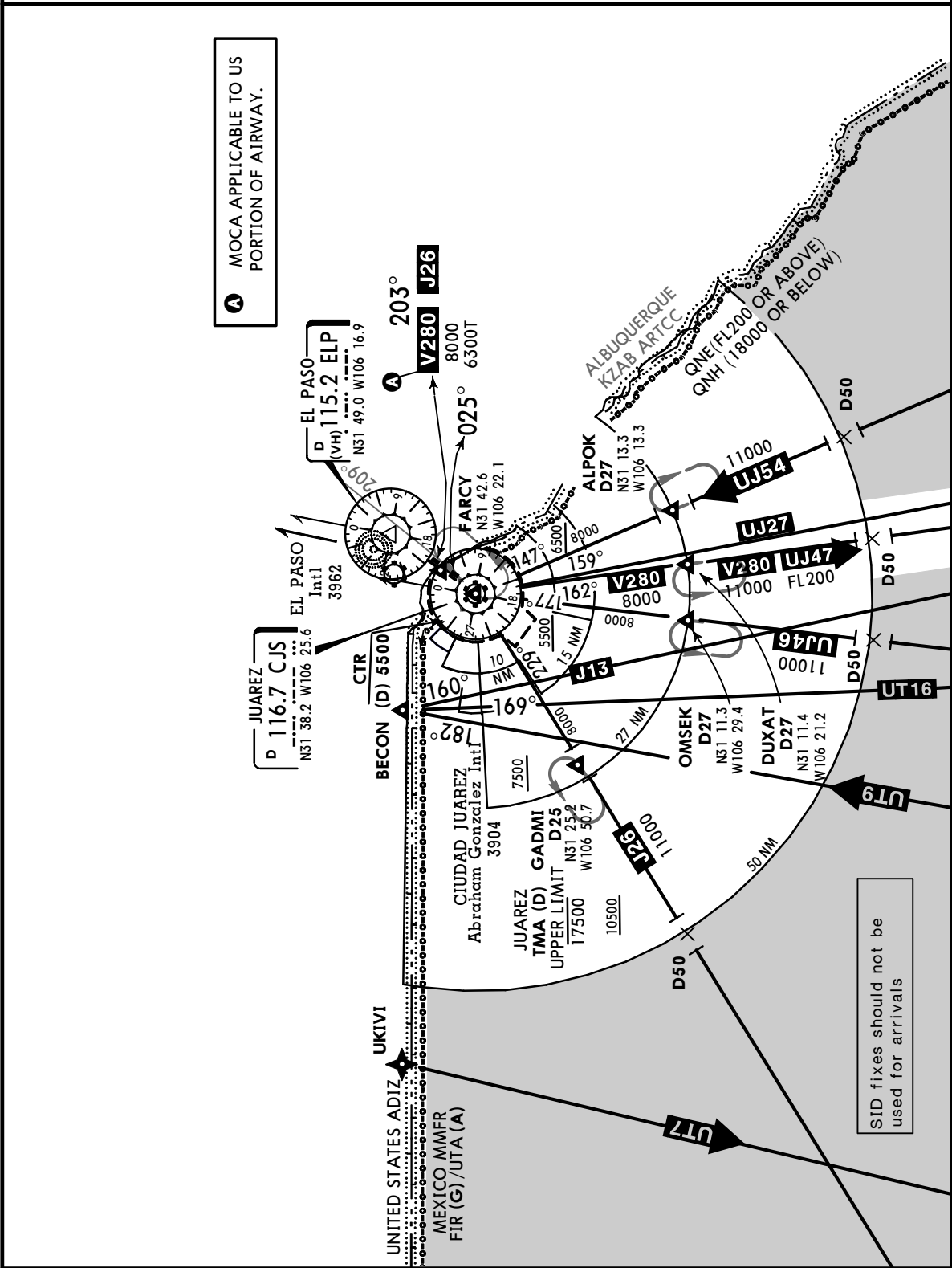
SPEED RESTRICTIONS WITHIN MEXICO AIRSPACE

MAXIMUM IAS UNLESS OTHERWISE PEDICTED OR AUTHORIZED BY ATC

Below 3000' AGL within 10 NM of any airport.....	200 KTS
Below 10000' MSL within Mexico Airspace.....	250 KTS
Below 10000' AGL within 30 NM of any airport.....	250 KTS

WITHIN CIUDAD JUAREZ TMA

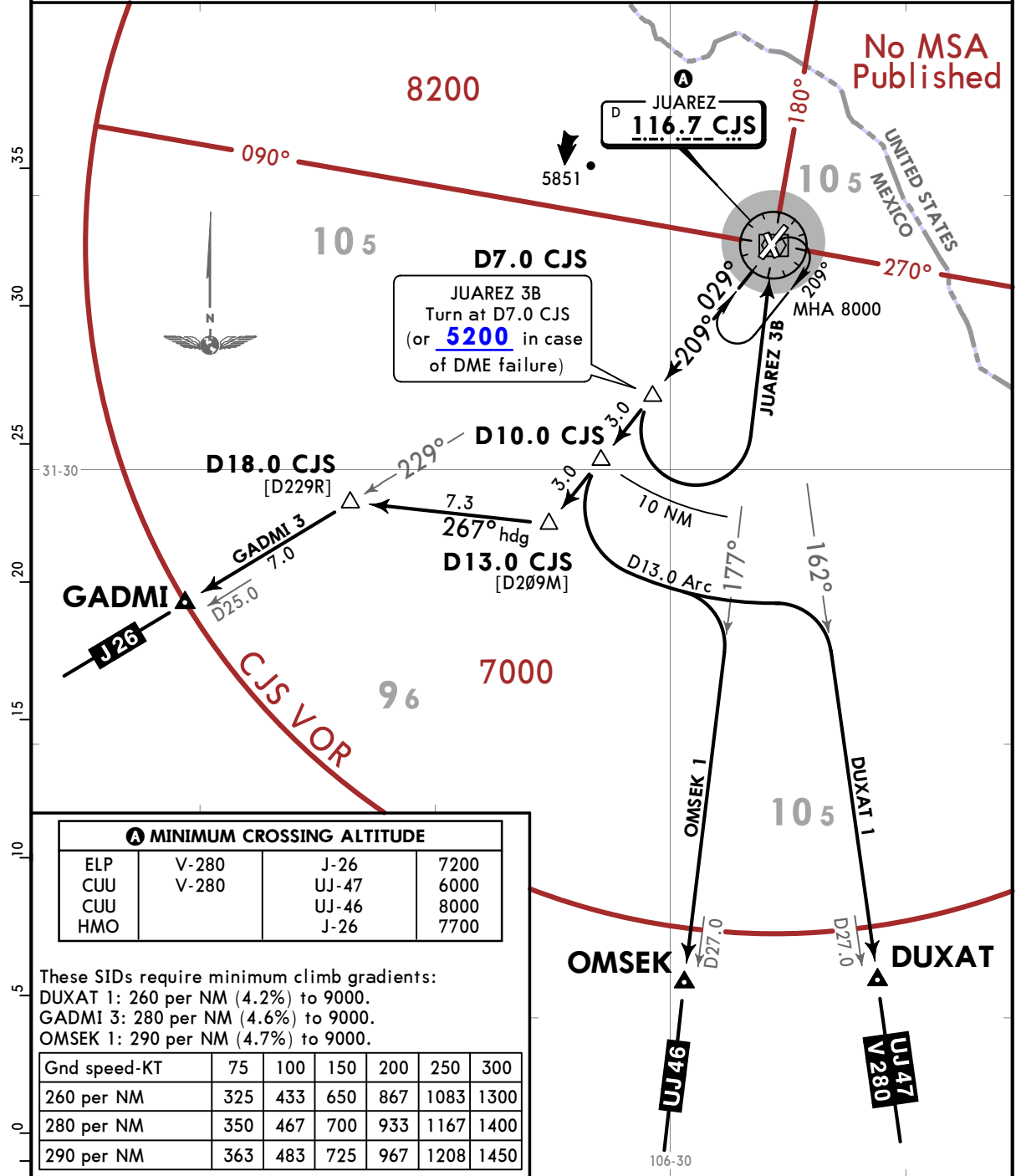
At or below 7000' MSL within 10 NM of CJS VORDME.....	200 KTS
At or below 13500' MSL within 30 NM of CJS VORDME.....	250 KTS



MMCS/CJS
ABRAHAM GONZALEZ INTL 4 MAR 22 **10-3** **JEPPESEN CIUDAD JUAREZ, MEXICO** **SID**

Apt Elev 3904	Trans alt: 18500
-------------------------	------------------

DUXAT 1 (DUXAT1), GADMI 3 (GADMI3)
JUAREZ 3B (CJS3B), OMSEK 1 (OMSEK1)
DEPARTURES
(RWY 21)



A MINIMUM CROSSING ALTITUDE			
ELP	V-280	J-26	7200
CUU	V-280	UJ-47	6000
CUU		UJ-46	8000
HMO		J-26	7700

These SIDs require minimum climb gradients:
 DUXAT 1: 260 per NM (4.2%) to 9000.
 GADMI 3: 280 per NM (4.6%) to 9000.
 OMSEK 1: 290 per NM (4.7%) to 9000.

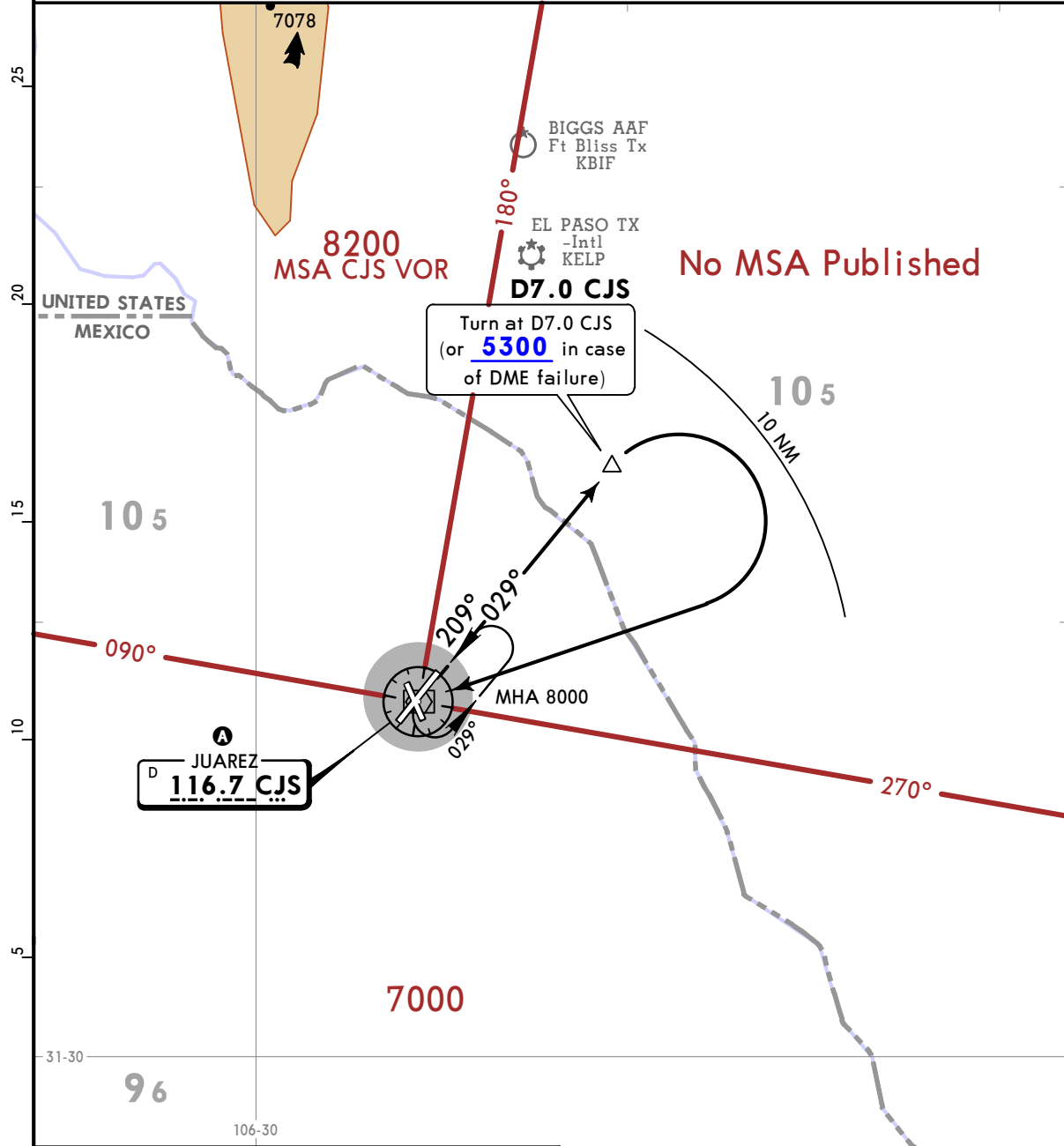
Gnd speed-KT	75	100	150	200	250	300
260 per NM	325	433	650	867	1083	1300
280 per NM	350	467	700	933	1167	1400
290 per NM	363	483	725	967	1208	1450

SID	INITIAL CLIMB
DUXAT 1 OMSEK 1	Climb via CJS R209 to D10.0 CJS, turn LEFT and proceed on the D13.0 Arc CJS to intercept the corresponding radial from CJS VOR to DUXAT or OMSEK and continue on the assigned route or ATC instructions.
GADMI 3	Climb via CJS R209 to D13.0 CJS, then turn RIGHT and proceed on heading 267° to intercept CJS R229 to GADMI and continue on the assigned route or ATC instructions.
JUAREZ 3B	Climb via CJS R209 to D7.0 CJS (or 5200 in case of DME failure), turn LEFT within 10 NM to cross CJS VOR and cross CJS VOR according to the MCA A for the assigned route or ATC instructions.

MMCS/CJS
ABRAHAM GONZALEZ INTL 4 MAR 22 **(10-3A)** **SID**
JEPPESEN CIUDAD JUAREZ, MEXICO

Apt Elev 3904	Trans alt: 18500
-------------------------	------------------

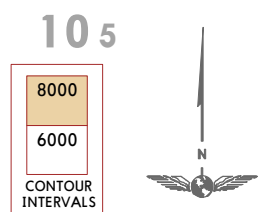
JUAREZ 3A DEPARTURE
(CJS3A)
(RWY 03)



A MINIMUM CROSSING ALTITUDE			
ELP	V-280	J-26	7200
CUU	V-280	UJ-47	6000
CUU		UJ-46	8000
HMO		J-26	7700

This SID requires a minimum climb gradient of 220 per NM (3.6%) to 7000.

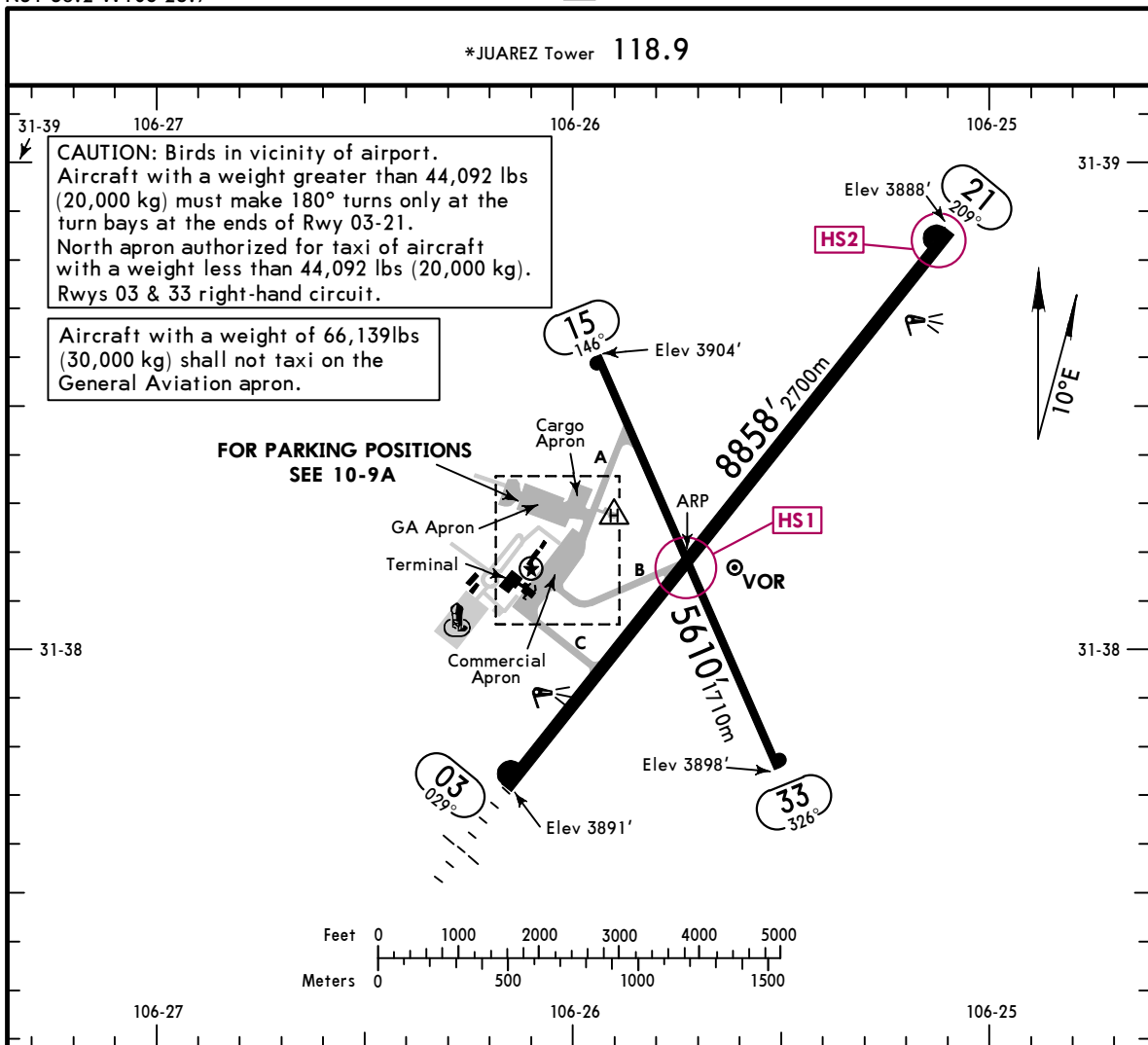
Gnd speed-KT	75	100	150	200	250	300
220 per NM	275	367	550	733	917	1100



INITIAL CLIMB
 Climb via CJS R029 to D7.0 CJS (or 5300 in case of DME failure), turn RIGHT within 10 NM to CJS VOR and cross CJS VOR according to the MCA A of the assigned route or ATC instructions.

MMCS/CJS
 Apt Elev **3904'**
 N31 38.2 W106 25.7

JEPPESSEN CIUDAD JUAREZ, MEXICO
 26 MAY 23 **(10-9)**
ABRAHAM GONZALEZ INTL



ADDITIONAL RUNWAY INFORMATION

RWY		USABLE LENGTHS			WIDTH
		Threshold	Landing Beyond Glide Slope	TAKE-OFF	
03	HIRL CL REIL SALS PAPI-L (angle 3.0°)				148' 45m
21	HIRL CL REIL PAPI-L (angle 3.0°)				
15					98' 30m
33					

RUNWAY INCURSION HOT SPOTS HS1

HS1 Hold out of Rwy 03/21.

HS2 Monitor Tower frequency on 118.9 MHz. Besides use your company's frequency as alternative communications means.

TAKE-OFF & DEPARTURE PROCEDURE			FOR FILING AS ALTERNATE	
	Rwys 03, 21	Rwys 15, 33	DAY	1000-2
1 & 2 Eng	700-1	VFR	A	
3 & 4 Eng	500-1		B	
		C		
		D		

DEPARTURE PROCEDURE: For departures and MCAs see Ciudad Juarez 10-3 and 10-3A.

MMCS/CJS

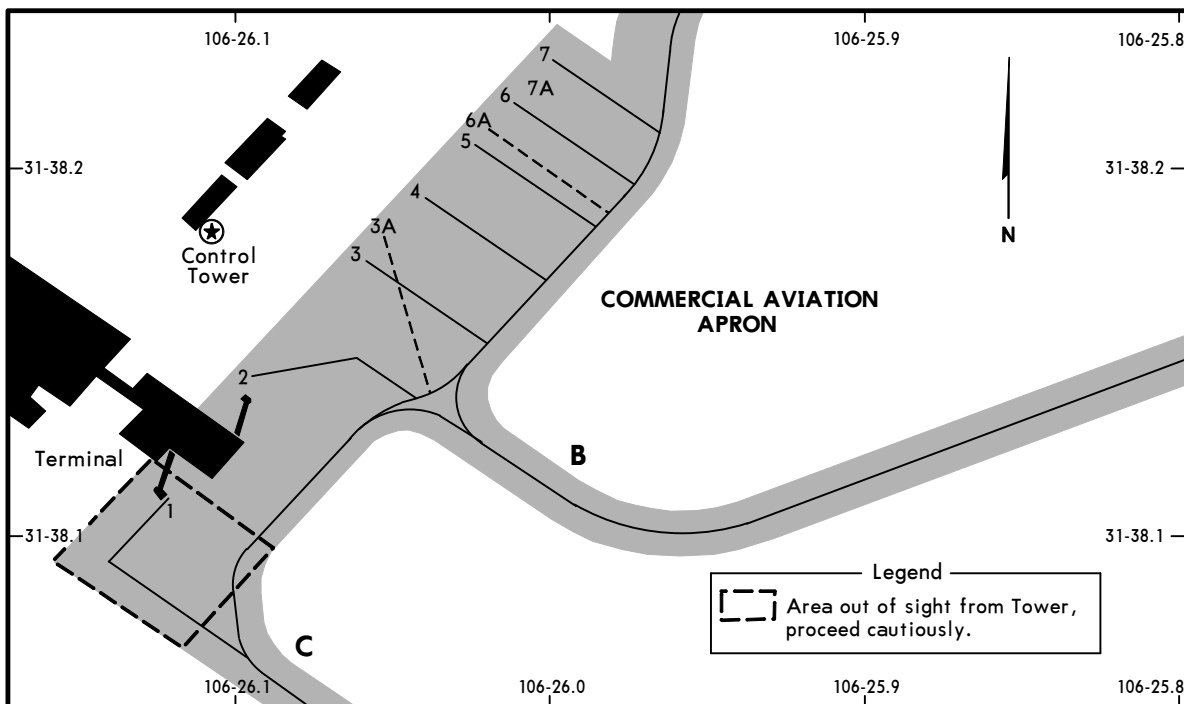
JEPPESEN

CIUDAD JUAREZ, MEXICO

26 MAY 23

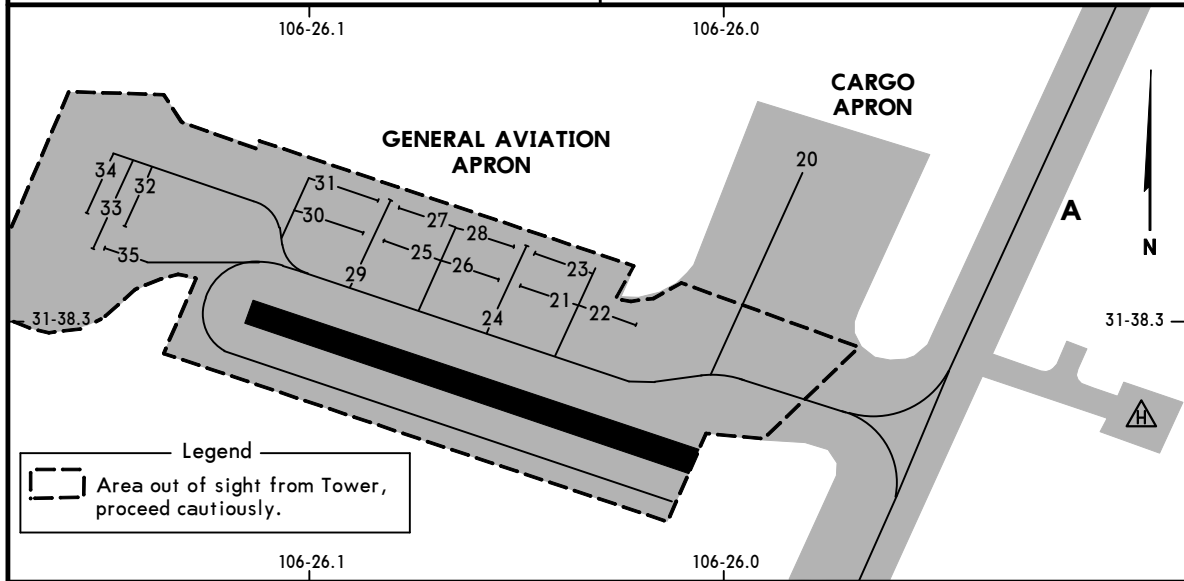
10-9A

ABRAHAM GONZALEZ INTL



COMMERCIAL AVIATION PARKING STANDS COORDINATES

SPOT No.	COORDINATES
1, 2	N 31 38.1 W 106 26.1
3, 3A	N 31 38.2 W 106 26.1
4 thru 7A	N 31 38.2 W 106 26.0



PARKING STANDS COORDINATES

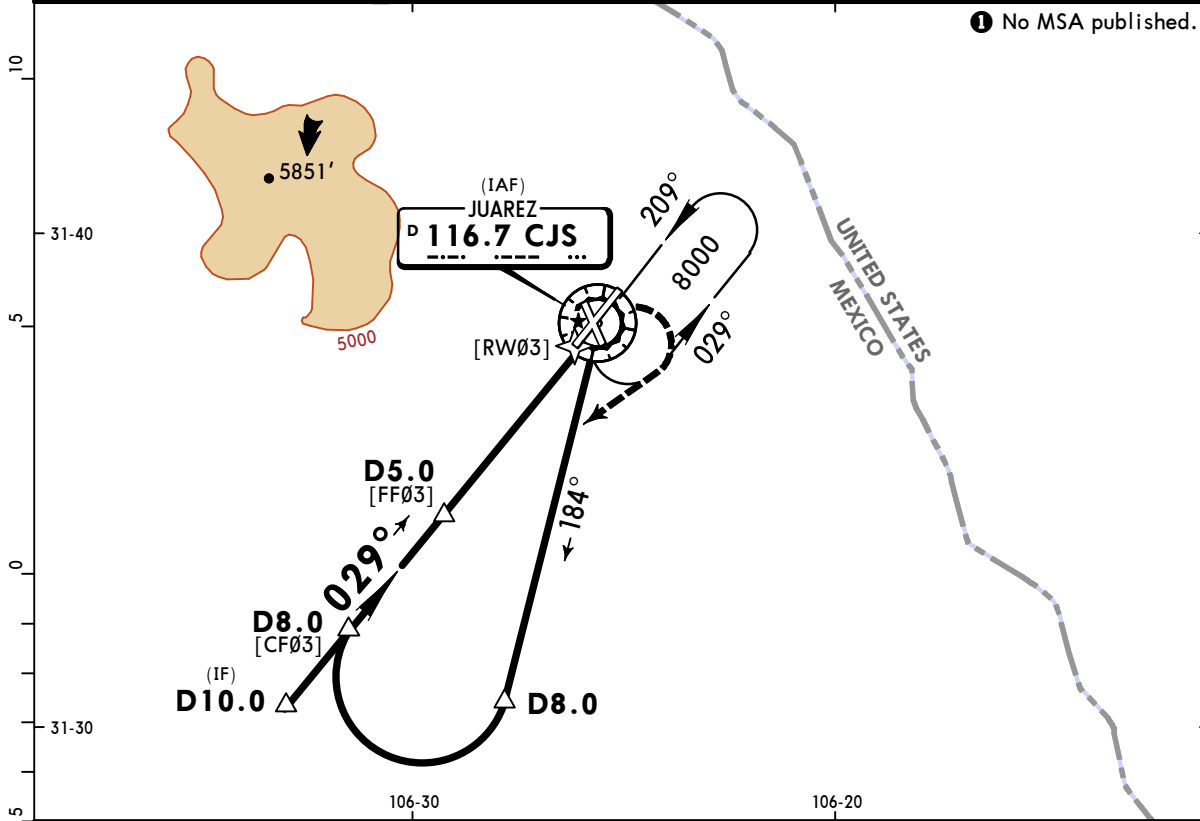
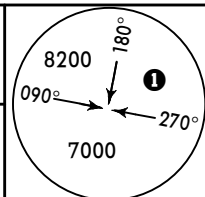
SPOT No.	COORDINATES
21 thru 24	GENERAL AVIATION N 31 38.3 W 106 26.0 N 31 38.3 W 106 26.1 N 31 38.3 W 106 26.2
25 thru 33, 35	
34	
35	
20	CARGO APRON N 31 38.3 W 106 26.0 N 31 38.3 W 106 25.9
H	

MMCS/CJS
ABRAHAM GONZALEZ INTL

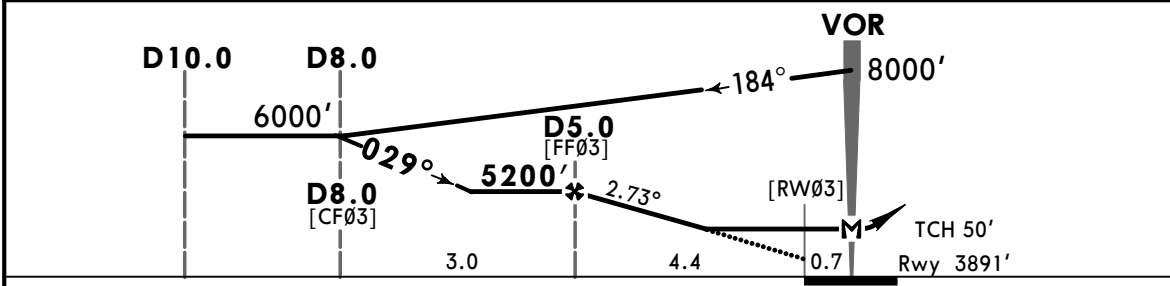
4 MAR 22 (13-1)

JEPPESEN CIUDAD JUAREZ, MEXICO
VOR DME 1 Rwy 03

*JUAREZ Approach				*JUAREZ Tower	
119.9				118.9	
VOR CJS 116.7	Final Apch Crs 029°	D5.0 5200' (1309')	MDA(H) 4400' (509')	Apt Elev 3904'	Rwy 3891'
MISSED APCH: Turn RIGHT to intercept and climb outbound on CJS VOR R-184, then turn RIGHT within 10 NM to return to CJS VOR at the minimum holding altitude.					
Alt Set: IN (MB on req)		Trans level: FL 195		Trans alt: 18500'	
					MSA CJS VOR



CJS DME	4.0	3.0
ALTITUDE	4910'	4620'



Gnd speed-Kts	70	90	100	120	140	160	SALSF REIL PAPI	RT	CJS 116.7 R-184	RT	CJS 116.7	
Descent Angle	2.73°	338	435	483	579	676						773
MAP at VOR												
FAF to MAP	5.0	4:17	3:20	3:00	2:30	2:09	1:53					

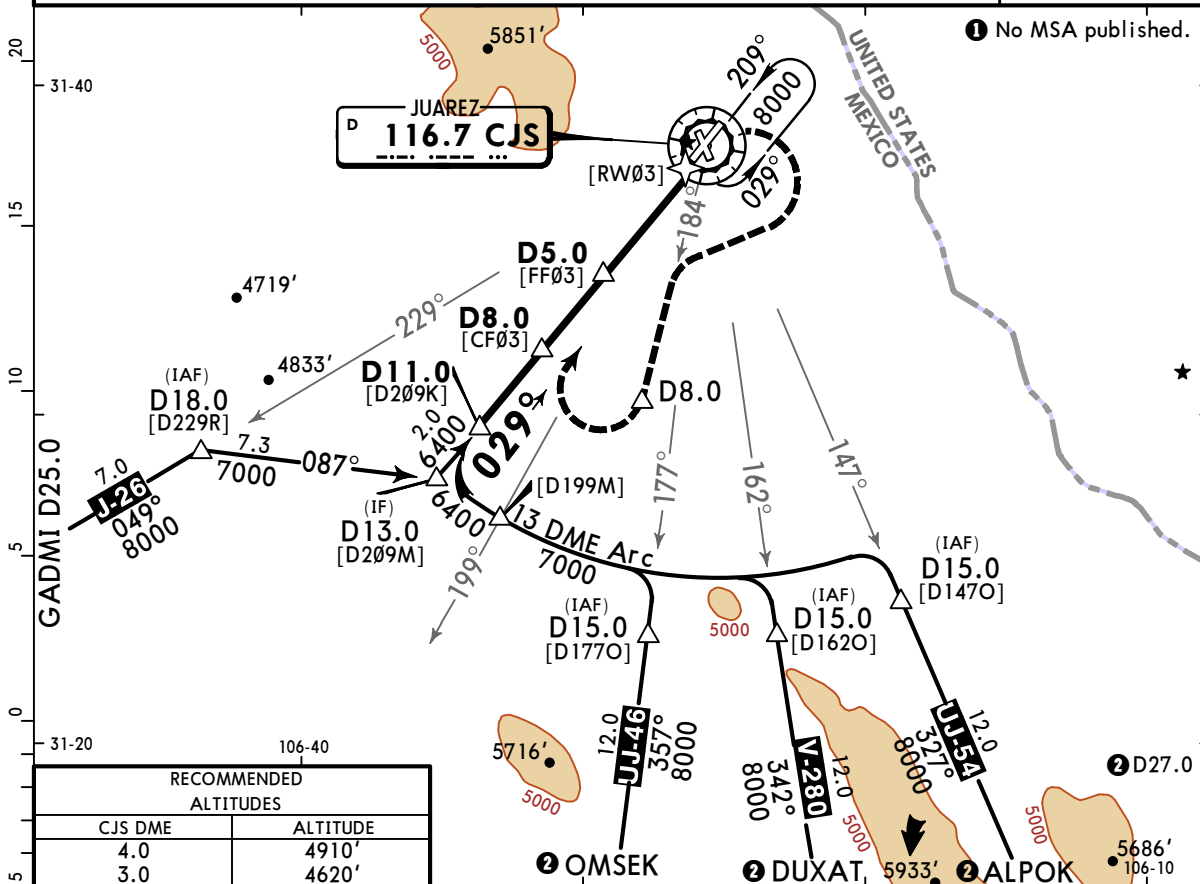
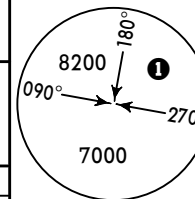
STRAIGHT-IN LANDING RWY03				CIRCLE-TO-LAND			
MDA(H) 4400' (509')				MDA(H) _____			
ALS out				Max Kts.			
A	1			90	4460' (556') - 1		
B				120			
C				140	4460' (556') - 1½		
D	1½			165	4640' (736') - 2¼		

MMCS/CJS
ABRAHAM GONZALEZ INTL

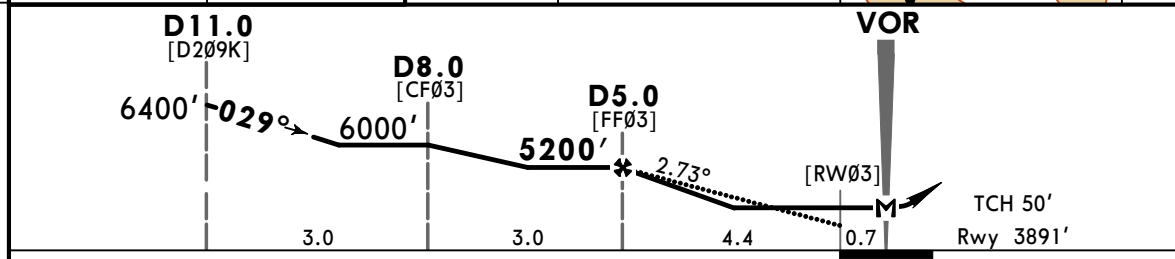
4 MAR 22 **(13-2)**

JEPPESSEN CIUDAD JUAREZ, MEXICO
VOR DME 2 Rwy 03

*JUAREZ Approach 119.9			*JUAREZ Tower 118.9		
VOR CJS 116.7	Final Apch Crs 029°	D5.0 5200' (1309')	MDA(H) 4400' (509')	Apt Elev 3904'	Rwy 3891'
MISSED APCH: Turn RIGHT to intercept and climb outbound on CJS VOR R-184, then turn RIGHT within 10 NM to return to CJS VOR at the minimum holding altitude.					
Alt Set: IN (MB on req)		Trans level: FL 195		Trans alt: 18500'	
In case of DME failure at any point during the procedure, maintain last assigned altitude and proceed to the station in accordance with ATC instructions.					
					MSA CJS VOR



RECOMMENDED ALTITUDES	
CJS DME	ALTITUDE
4.0	4910'
3.0	4620'

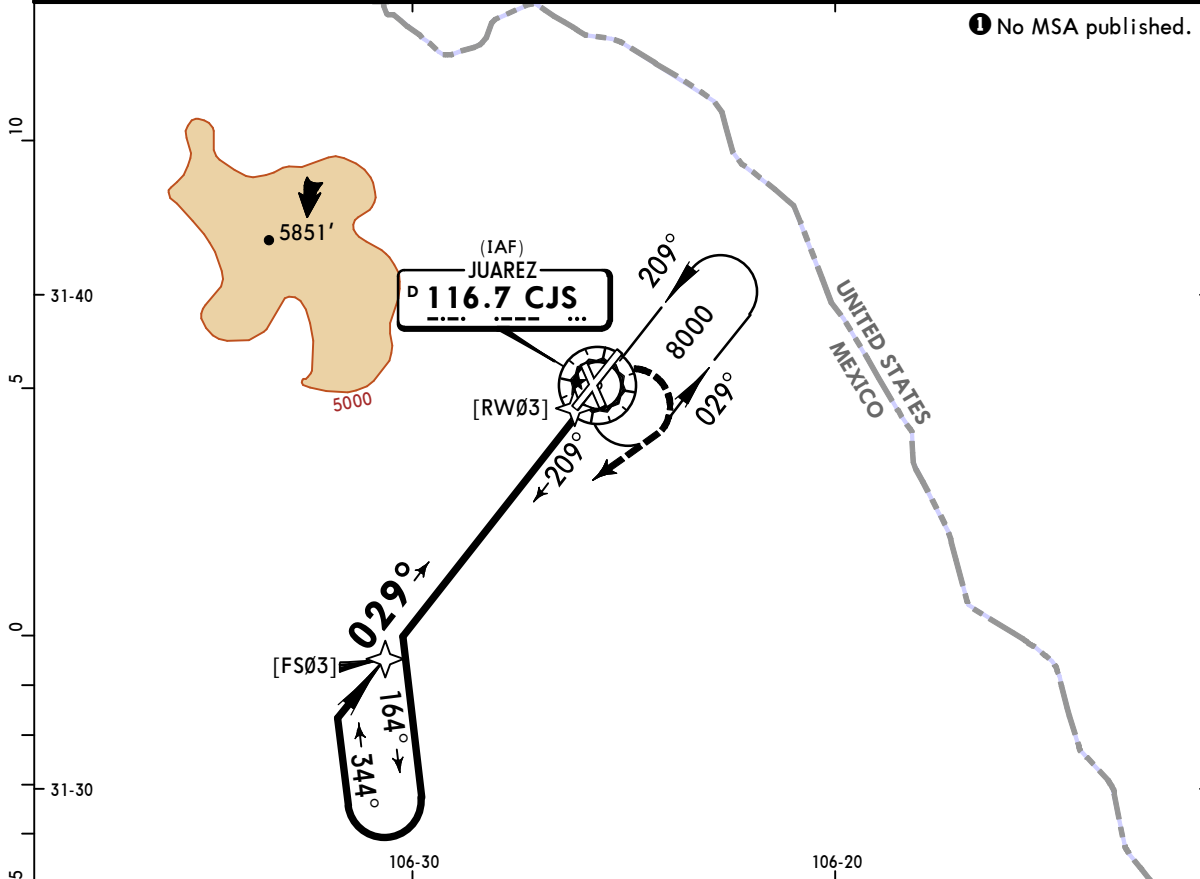


Gnd speed-Kts	70	90	100	120	140	160	SALS F REIL PAPI	RT	CJS 116.7 R-184	RT	CJS 116.7	
Descent Angle	2.73°	338	435	483	579	676						773
MAP at VOR	5.0	4:17	3:20	3:00	2:30	2:09						1:53

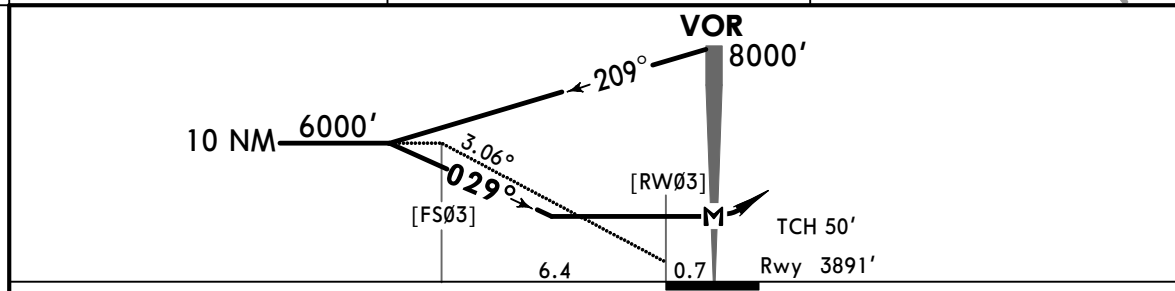
STRAIGHT-IN LANDING RWY03				CIRCLE-TO-LAND			
MDA(H) 4400' (509')				MDA(H)			
ALS out				Max Kts.			
A	1			90	4460' (556') - 1		
B	1			120	4460' (556') - 1		
C	1½			140	4460' (556') - 1½		
D	1½			165	4640' (736') - 2¼		

MMCS/CJS
ABRAHAM GONZALEZ INTL 14 MAY 21 **(13-3)** **Eff 20 May** **JEPESEN CIUDAD JUAREZ, MEXICO**
VOR Rwy 03

*JUAREZ Approach			*JUAREZ Tower		
119.9			118.9		
VOR CJS 116.7	Final Apch Crs 029°	No FAF	MDA(H) 4460' (569')	Apt Elev 3904' Rwy 3891'	
MISSED APCH: Turn RIGHT to proceed and climb outbound on CJS VOR R-209. Make a LEFT procedure turn within 10 NM and return to CJS VOR at the minimum holding altitude.					
Alt Set: MB (IN on req)		Rwy Elev: 135 MB	Trans level: FL 195	Trans alt: 18500'	MSA CJS VOR



1 No MSA published.

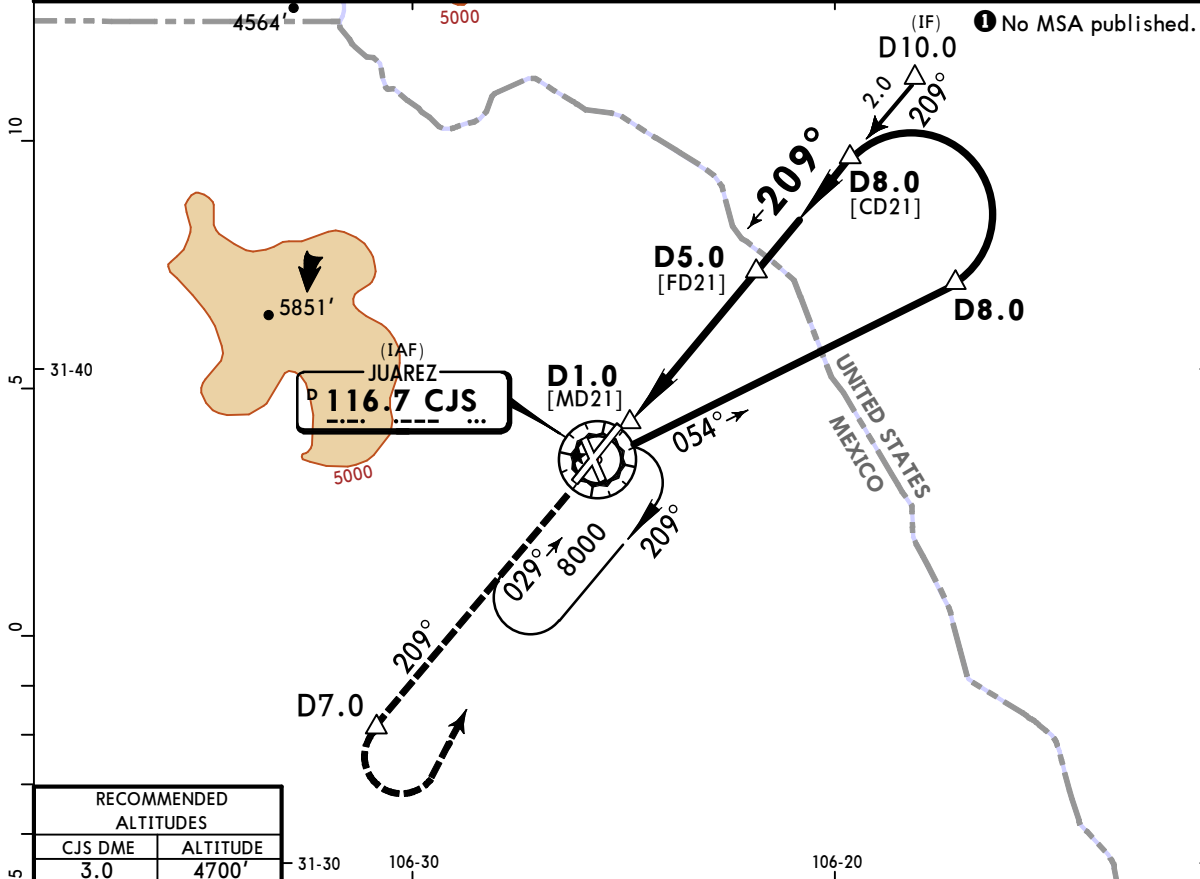


Gnd speed-Kts	70	90	100	120	140	160	SALSF REIL PAPI		CJS on 116.7 R-209
Descent Angle 3.06°	379	487	541	650	758	866			
MAP at VOR									

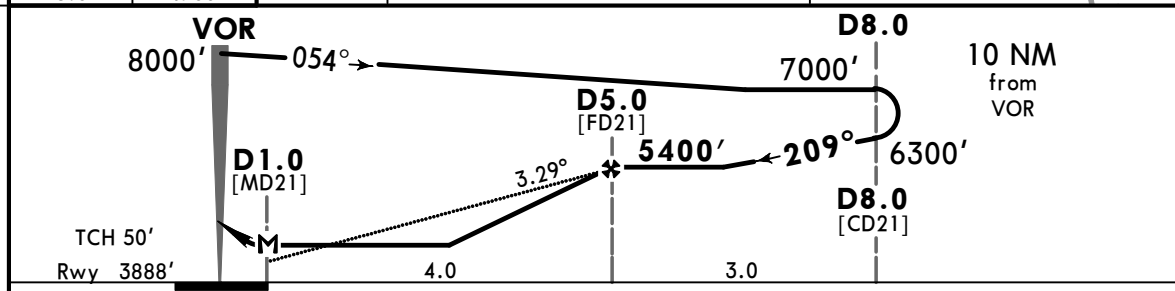
STRAIGHT-IN LANDING RWY 03			CIRCLE-TO-LAND		
MDA(H) 4460' (569')			MDA(H)		
	ALS out	Max Kts.			
A	1	90	4460' (556') - 1		
B		120			
C	1½	140	4460' (556') - 1½		
D	1¾	165	4640' (736') - 2¼		

MMCS/CJS ABRAHAM GONZALEZ INTL 14 MAY 21 **13-4** Eff 20 May VOR DMÉ Rwy 21

*JUAREZ Approach				*JUAREZ Tower	
119.9				118.9	
VOR CJS 116.7	Final Apch Crs 209°	D5.0 5400' (1512')	MDA(H) 4580' (692')	Apt Elev 3904'	Rwy 3888'
MISSED APCH: Climb outbound on CJS VOR R-209 to D7.0, then turn LEFT within 10 NM to return to CJS VOR at the minimum holding altitude.					
Alt Set: MB (IN on req) Rwy Elev: 135 MB Trans level: FL 195 Trans alt: 18500'					MSA CJS VOR



RECOMMENDED ALTITUDES	
CJS DME	ALTITUDE
3.0	4700'



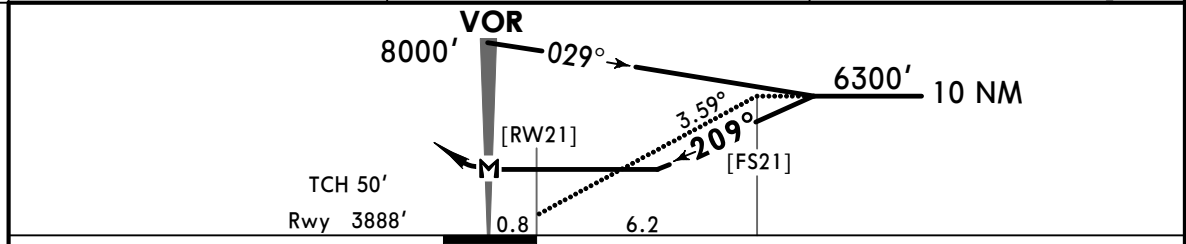
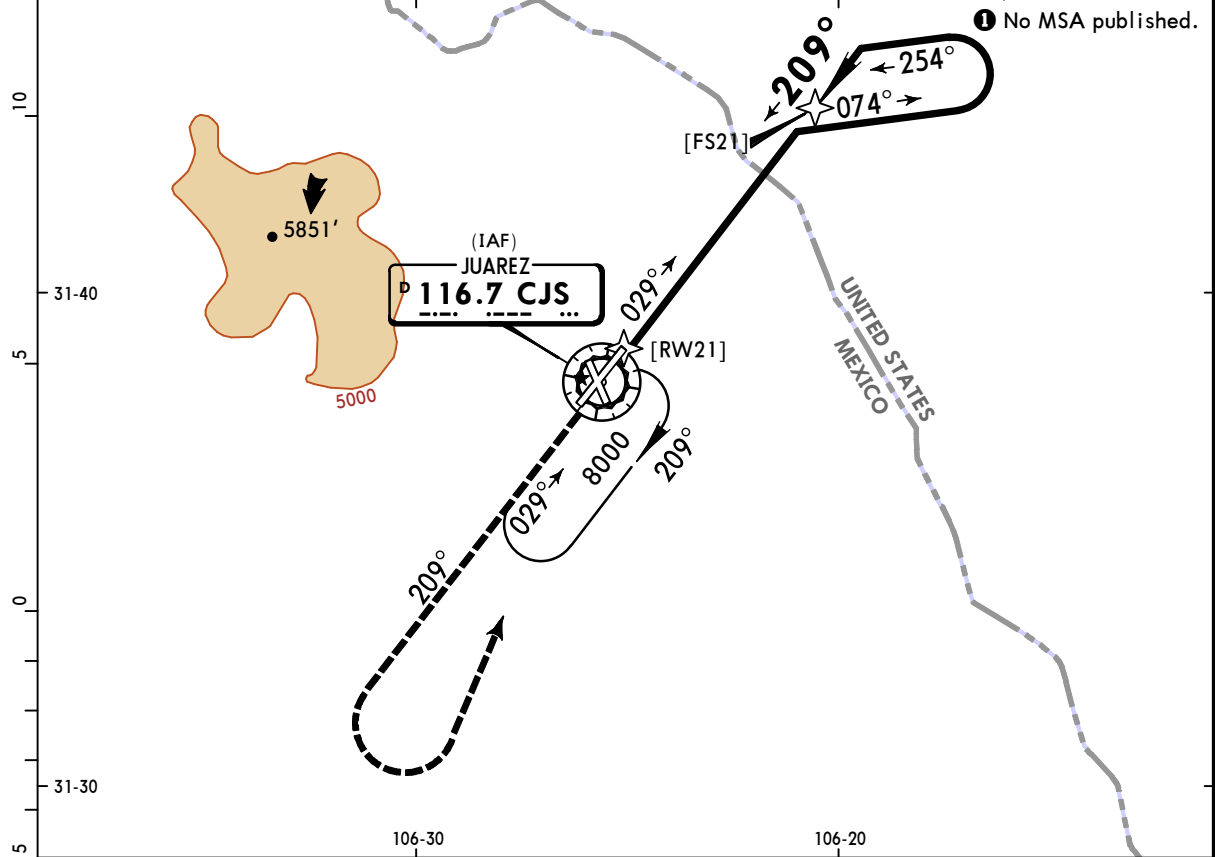
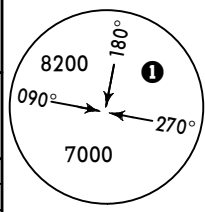
Gnd speed-Kts	70	90	100	120	140	160
Descent Angle 3.29°	407	524	582	699	815	931
MAP at D1.0						
FAF to MAP	4.2	3:36	2:48	2:31	2:06	1:35

REIL PAPI-L	↑	CJS on 116.7	D7.0
		R-209	

STRAIGHT-IN LANDING RWY 21			CIRCLE-TO-LAND		
MDA(H) 4580' (692')			MDA(H) _____		
A	1	Max Kts 90	4640' (736') -1		
B	2	120	4640' (736') -2		
C	2 1/4	140	4640' (736') -2 1/4		
D	2 1/4	165	4640' (736') -2 1/4		

MMCS/CJS ABRAHAM GONZALEZ INTL 14 MAY 21 (13-5) Eff 20 May VOR Rwy 21

*JUAREZ Approach			*JUAREZ Tower																										
119.9			118.9																										
VOR CJS 116.7	Final Apch Crs 209°	No FAF	MDA(H) 4700' (812')	Apt Elev 3904' Rwy 3888'																									
MISSED APCH: Climb outbound on CJS VOR R-209, then turn LEFT within 10 NM to return to CJS VOR at the minimum holding altitude.																													
<table border="1"> <thead> <tr> <th colspan="8">MAX TIME TO TURN.</th> </tr> <tr> <th>Gnd speed-Kts</th> <th>80</th> <th>100</th> <th>120</th> <th>140</th> <th>160</th> <th>180</th> <th>200</th> </tr> </thead> <tbody> <tr> <td>7 NM to turn</td> <td>5:15</td> <td>4:12</td> <td>3:30</td> <td>3:00</td> <td>2:37</td> <td>2:20</td> <td>2:06</td> </tr> </tbody> </table>						MAX TIME TO TURN.								Gnd speed-Kts	80	100	120	140	160	180	200	7 NM to turn	5:15	4:12	3:30	3:00	2:37	2:20	2:06
MAX TIME TO TURN.																													
Gnd speed-Kts	80	100	120	140	160	180	200																						
7 NM to turn	5:15	4:12	3:30	3:00	2:37	2:20	2:06																						
Alt Set: MB (IN on req)			Rwy Elev: 135 MB	Trans level: FL 195	Trans alt: 18500'																								

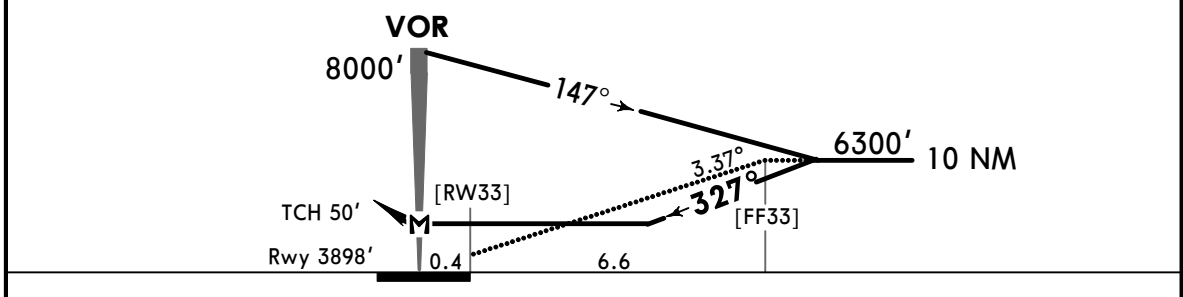
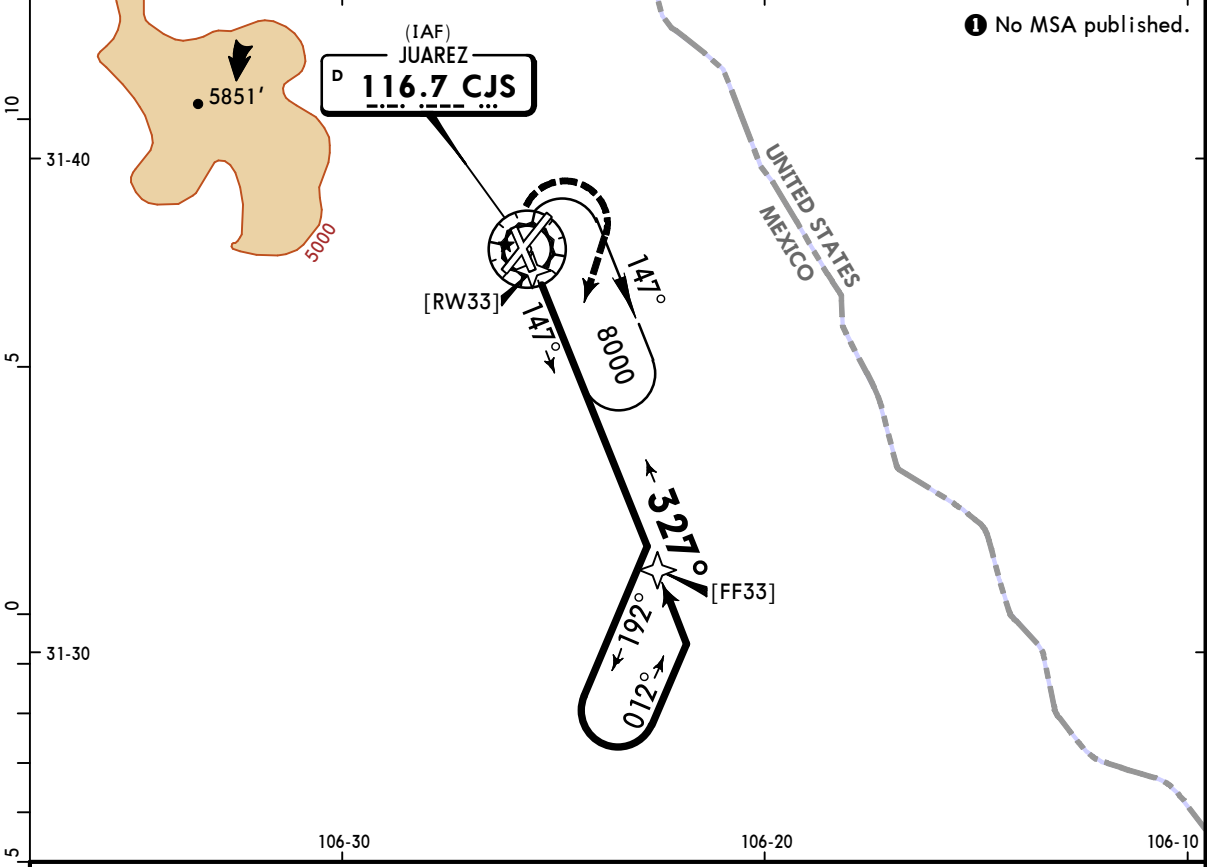


Gnd speed-Kts	70	90	100	120	140	160	REIL PAPI-L	↑ on CJS 116.7 R-209	← LT CJS 116.7
Descent Angle	3.59°	445	572	635	762	889			
MAP at VOR									

STRAIGHT-IN LANDING RWY 21			CIRCLE-TO-LAND		
MDA(H) 4700' (812')			MDA(H)		
A	1	90	4700' (796') -1		
B	1¼	120	4700' (796') -1¼		
C	2½	140	4700' (796') -2½		
D	2¾	165	4700' (796') -2¾		

MMCS/CJS
ABRAHAM GONZALEZ INTL **JEPESEN CIUDAD JUAREZ, MEXICO**
 14 MAY 21 **13-6** **CAT A, B & C** **VOR Rwy 33**
 Eff 20 May

*JUAREZ Approach			*JUAREZ Tower		
119.9			118.9		
VOR CJS 116.7	Final Apch Crs 327°	No FAF	MDA(H) 4540' (642')	Apt Elev 3904' Rwy 3898'	
MISSED APCH: Turn RIGHT to intercept and climb outbound on CJS VOR R-147, return to CJS VOR at the minimum holding altitude.					
Alt Set: MB (IN on req) Rwy Elev: 135 MB Trans level: FL 195 Trans alt: 18500'					MSA CJS VOR



Gnd speed-Kts	70	90	100	120	140	160		CJS
Descent Angle 3.37°	417	537	596	716	835	954		116.7
MAP at VOR							R-147	

STRAIGHT-IN LANDING RWY33			CIRCLE-TO-LAND		
MDA(H) 4540' (642')			MDA(H)		
A	1		Max Kts		
B			90	4640' (736') -1	
C	1 3/4		120		
D	NA		140	4640' (736') -2	
			D	NA	