

General Information

Location: TEPIC MEX
ICAO/IATA: MMEP / TPQ
Lat/Long: N21° 25.0', W104° 50.7'
Elevation: 3025 ft

Airport Use: Public
Daylight Savings: Not Observed
UTC Conversion: +7:00 = UTC
Magnetic Variation: 6.0° E

Fuel Types: 100 Octane (LL), Jet A
Customs: No
Airport Type: IFR
Landing Fee: No
Control Tower: Yes
Jet Start Unit: No
LLWS Alert: No
Beacon: Yes

Sunrise: 1259 Z
Sunset: 0028 Z

Runway Information

Runway: 02
Length x Width: 10190 ft x 148 ft
Surface Type: asphalt
TDZ-Elev: 3025 ft
Lighting: Edge

Runway: 20
Length x Width: 10190 ft x 148 ft
Surface Type: asphalt
TDZ-Elev: 3018 ft
Lighting: Edge

Communication Information

Tepic Tower: 118.800
Vallarta Approach: 119.000

TMA



21 JUL 23 **10-1B**

PUERTO VALLARTA, MEXICO

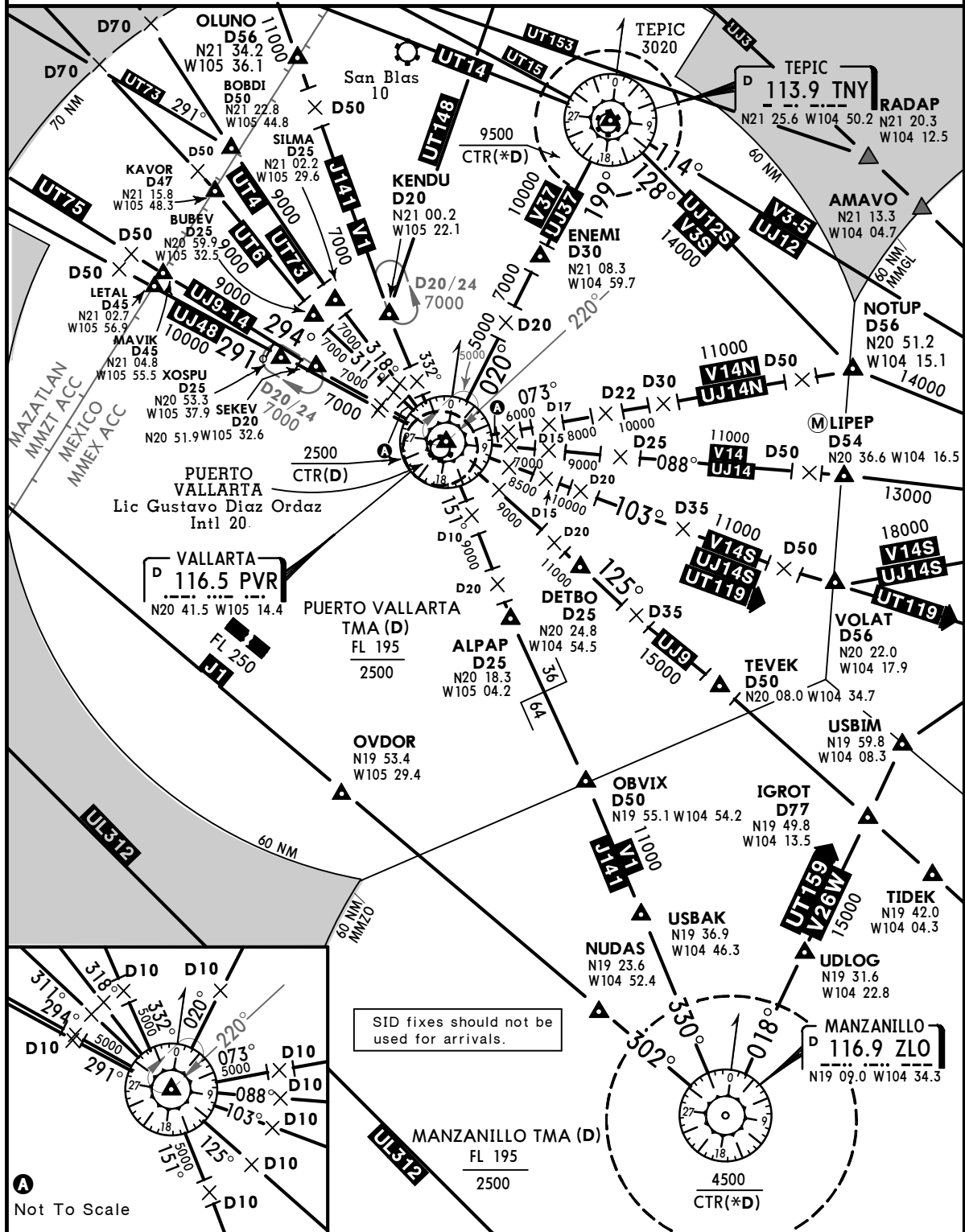
LIC GUSTAVO DIAZ ORDAZ

PUERTO VALLARTA Approach (R)
119.0 121.3

SPEED RESTRICTIONS WITHIN MEXICO AIRSPACE

MAXIMUM IAS UNLESS OTHERWISE DEPICTED OR AUTHORIZED BY ATC

- Below 3000' AGL within 10NM of any airport.....200 KTS
 - Below 10000' MSL within Mexico Airspace.....250 KTS
 - Below 10000' AGL within 30NM of any airport.....250 KTS
- WITHIN PUERTO VALLARTA TMA**
- At or below 3000' MSL within 10NM of PVR VORDME.....200 KTS
 - At or below 10000' MSL within 30NM of PVR VORDME.....250 KTS
- WITHIN MANZANILLO TMA**
- At or below 3000' MSL within 10NM of ZLO VORDME.....200 KTS
 - At or below 10000' MSL within 30NM of ZLO VORDME.....250 KTS



CHANGES: ATS system.

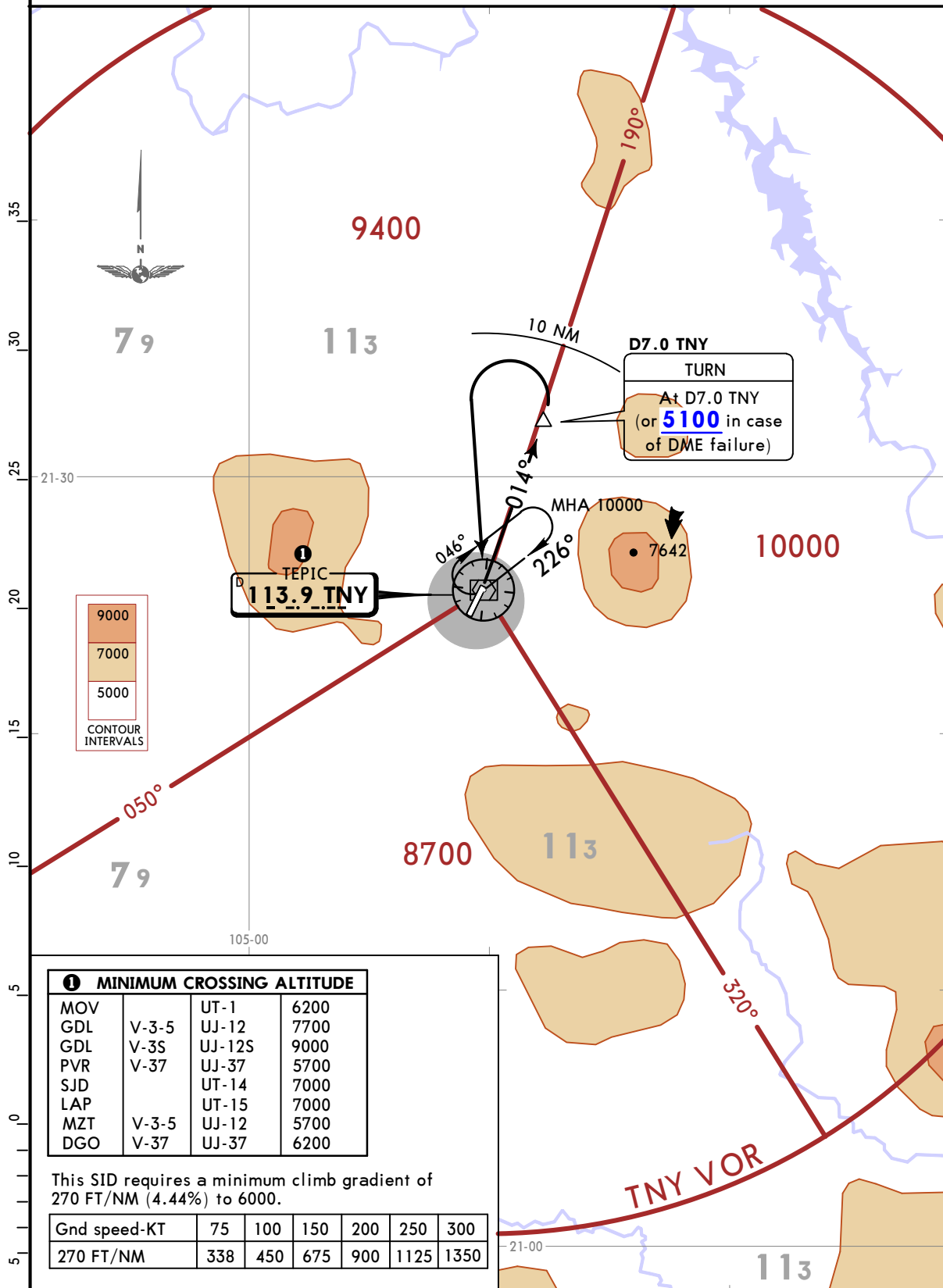
MMEP/TPQ
TEPIC INTL

JEPPESEN
22 DEC 23 10-3 Eff 28 Dec

TEPIC, MEXICO
SID

Apt Elev 3025	Trans alt: 18500
------------------	------------------

TEPIC 4A DEPARTURE (TNY4A)
(RWY 02)



① MINIMUM CROSSING ALTITUDE

MOV		UT-1	6200
GDL	V-3-5	UJ-12	7700
GDL	V-3S	UJ-12S	9000
PVR	V-37	UJ-37	5700
SJD		UT-14	7000
LAP		UT-15	7000
MZT	V-3-5	UJ-12	5700
DGO	V-37	UJ-37	6200

This SID requires a minimum climb gradient of 270 FT/NM (4.44%) to 6000.

Gnd speed-KT	75	100	150	200	250	300
270 FT/NM	338	450	675	900	1125	1350

INITIAL CLIMB

Climb via TNY R014 to D7.0 TNY (or 5100 in case of DME failure) then turn LEFT within 10 NM to TNY VOR and cross TNY VOR according to the MCA ① or ATC instructions.

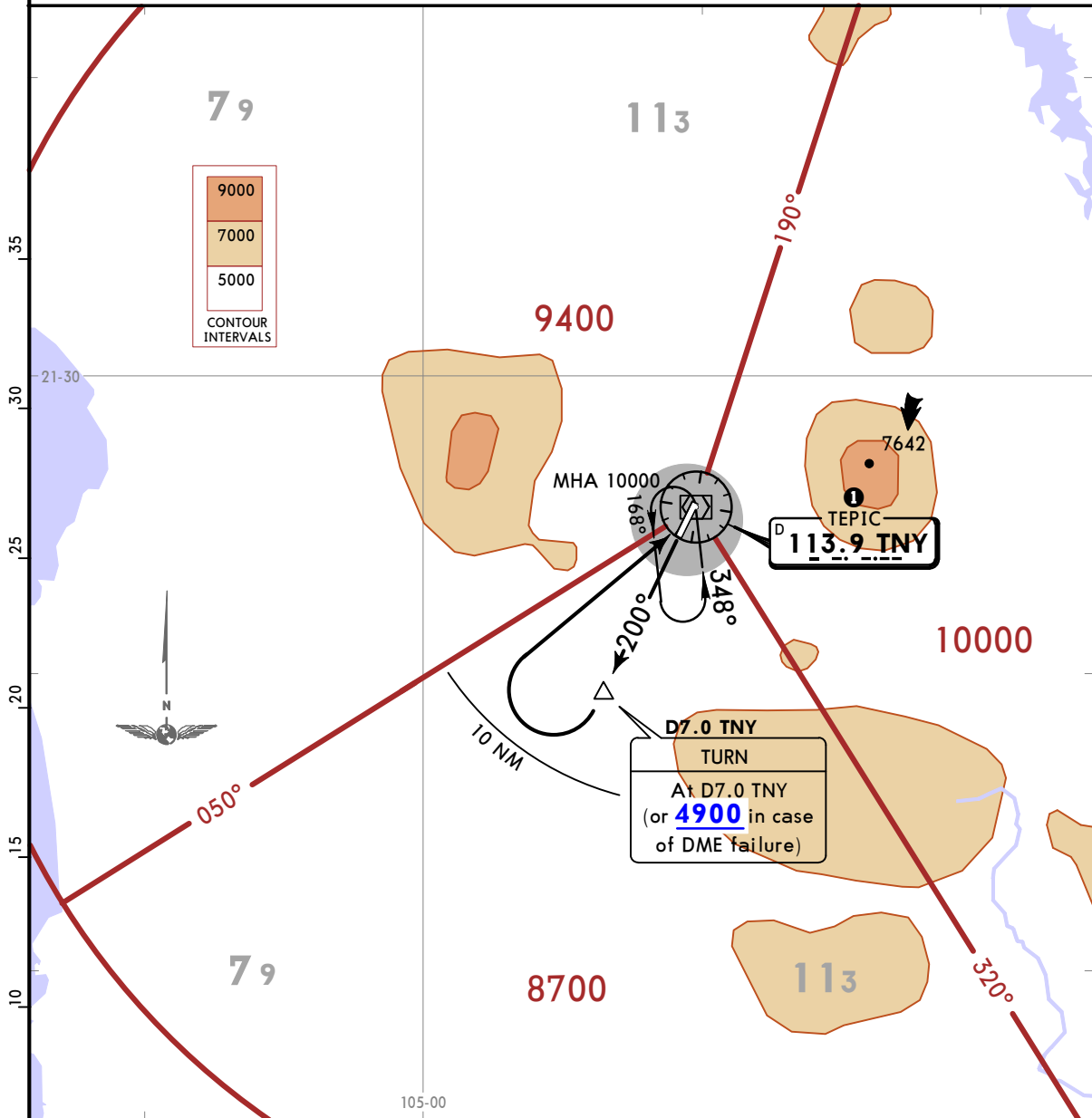
MMEP/TPQ
TEPIC INTL

JEPPESEN
22 DEC 23 (10-3A) Eff 28 Dec

TEPIC, MEXICO
SID

Apt Elev 3025	Trans alt: 18500
------------------	------------------

TEPIC 4B DEPARTURE (TNY4B)
(RWY 20)



① MINIMUM CROSSING ALTITUDE

MOV		UT-1	6200
GDL	V-3-5	UJ-12	7700
GDL	V-3S	UJ-12S	9000
PVR	V-37	UJ-37	5700
SJD		UT-14	7000
LAP		UT-15	7000
MZT	V-3-5	UJ-12	5700
DGO	V-37	UJ-37	6200

This SID requires a minimum climb gradient of 270 FT/NM (4.44%) to 6500.

Gnd speed-KT	75	100	150	200	250	300
270 FT/NM	338	450	675	900	1125	1350

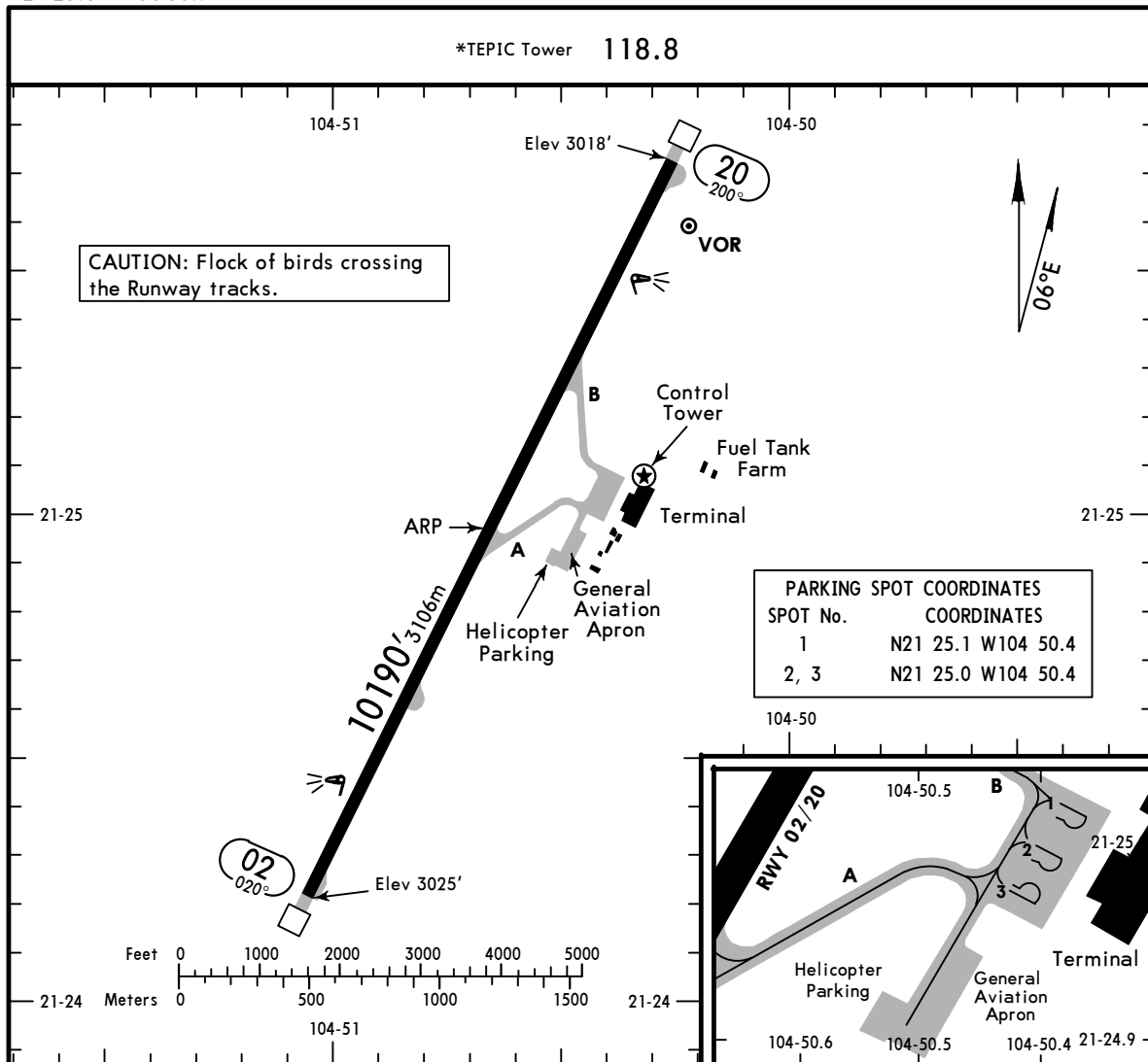
INITIAL CLIMB

Climb via TNY R200 to D7.0 TNY (or 4900 in case of DME failure) then turn RIGHT within 10 NM to TNY VOR and cross TNY VOR according to the MCA ① or ATC instructions.

MMEP/TPQ
 Apt Elev **3025'**
 N21 25.0 W104 50.7

JEPPESEN
 2 FEB 24 **(10-9)**

TEPIC, MEXICO
TEPIC INTL



ADDITIONAL RUNWAY INFORMATION

RWY	USABLE LENGTHS	LANDING BEYOND	TAKE-OFF	WIDTH
02 20	MIRL(30m) REIL PAPI-L (angle 3.0°)			148' 45m

State		TAKE-OFF	
		Rwy 02	Rwy 20
1 & 2 Eng	500 -	V1600m	700 - V3200m
3 & 4 Eng		V1	V2

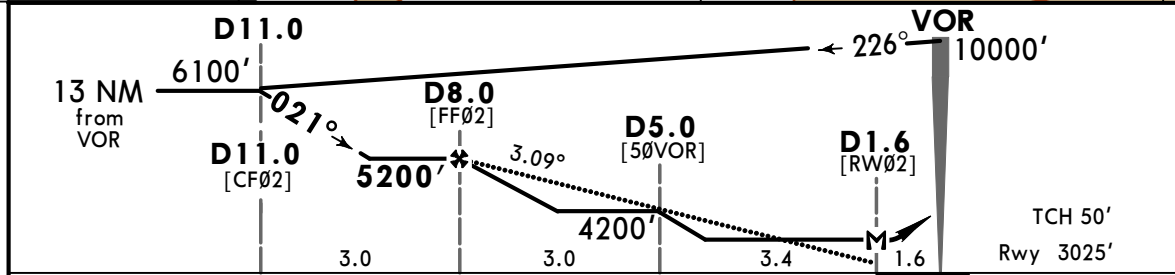
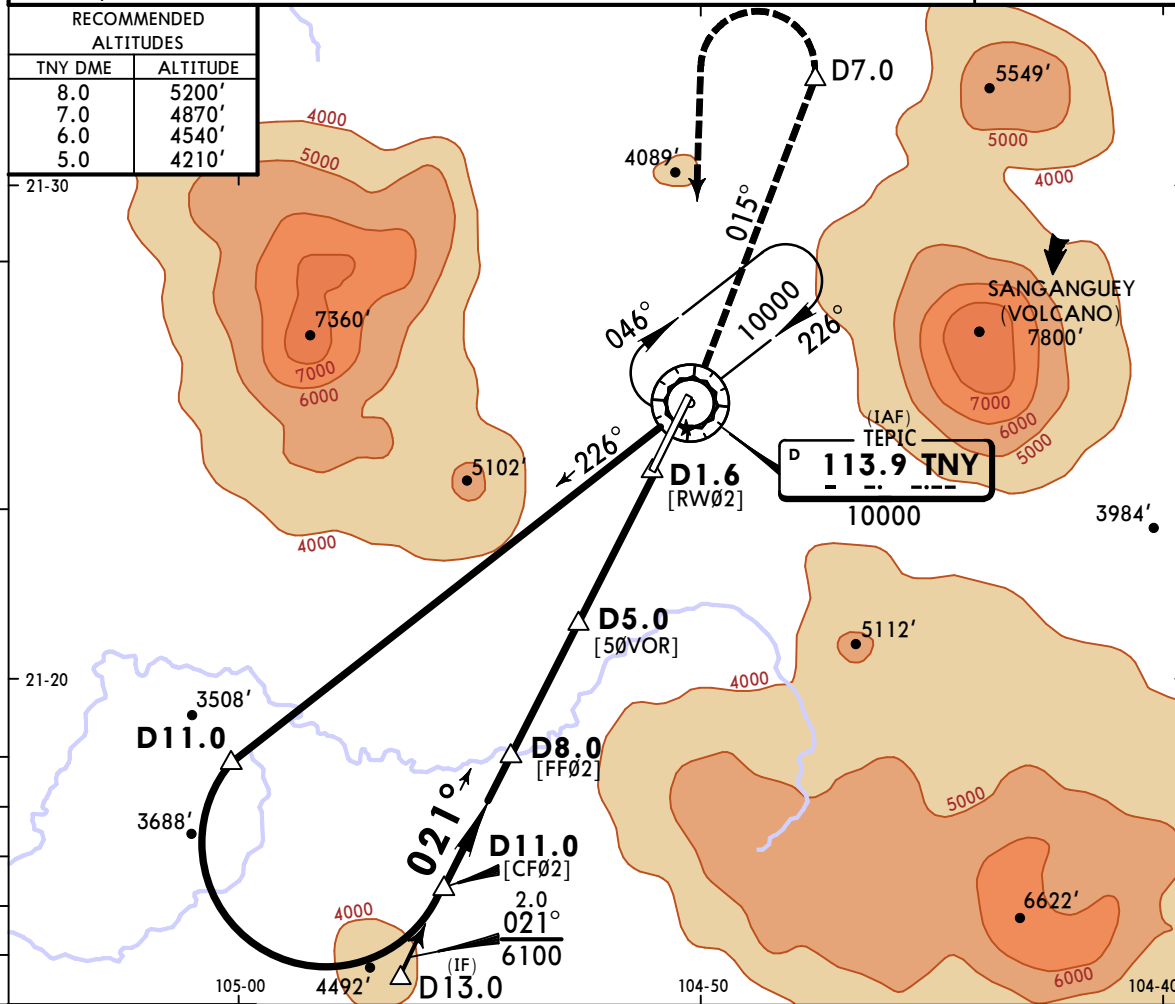
1 & 2 Eng	500 -	V1600m	700 -	V3200m
3 & 4 Eng		V1		V2

MMEP/TPQ
TEPIC INTL

JEPPesen
5 JUL 24 **13-1** Eff 11 Jul

TEPIC, MEXICO
VOR Rwy 02

VALLARTA Approach 119.0			*TEPIC Tower 118.8		
VOR TNY 113.9	Final Apch Crs 021°	D8.0 5200' (2175')	MDA(H) 3900' (875')	Appt Elev 3025'	Rwy 3025'
MISSED APCH: Climb via TNY VOR R-015 to D7.0, then turn LEFT within 10 NM to TNY VOR at the minimum holding altitude.					
Alt Set: IN (MB on req) Rwy Elev: 106 MB Trans level: FL 195 Trans alt: 18500'					
DME required.					



Gnd speed-Kts	70	90	100	120	140	160	REIL PAPI-L	↑ via TNY 113.9 D7.0 R-015
Descent Angle 3.09°	383	492	547	656	765	875		
MAP at D1.6								
FAF to MAP	6.4	5:29	4:16	3:50	3:12	2:45	2:24	

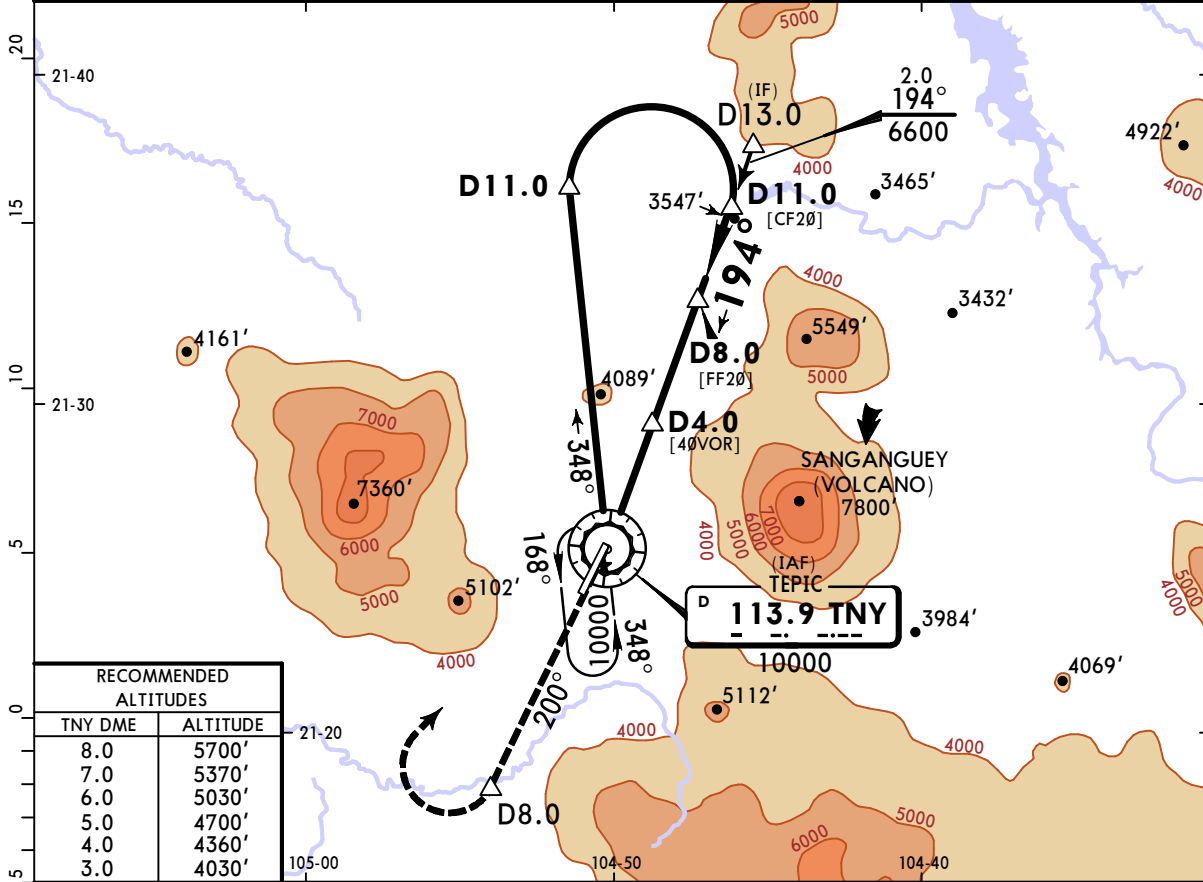
State STRAIGHT-IN LANDING			CIRCLE-TO-LAND		
MDA(H) 3900' (875')			Max Kts		
A	V1	V1600m	100	4060'(1035') V1 1/2 V2400m	
B	V1 1/4	V2000m	135		
C	V2 1/2	V4000m	180	5520'(2495') V3 V4.8km	
D			205	7420'(4395') V3 V4.8km	

MMEP/TPQ
TEPIC INTL

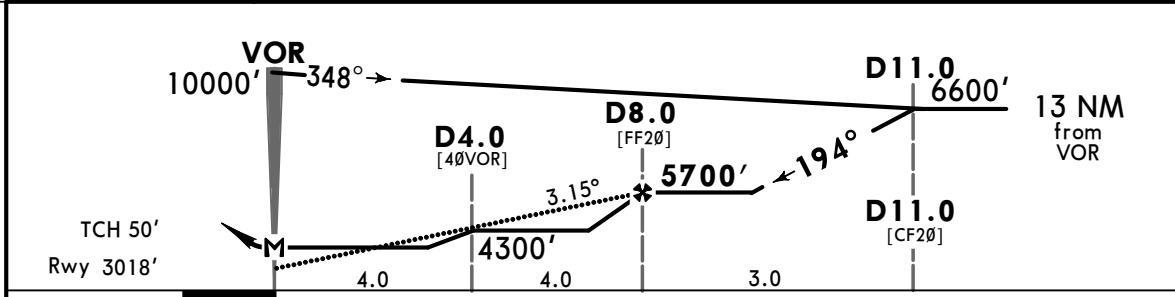
JEPPesen
5 JUL 24 **(13-2)** Eff 11 Jul

TEPIC, MEXICO
VOR Rwy 20

VALLARTA Approach 119.0			*TEPIC Tower 118.8		
VOR TNY 113.9	Final Apch Crs 194°	D8.0 5700' (2682')	MDA(H) 3740' (722')	Apt Elev 3025' Rwy 3018'	
MISSED APCH: Climb via TNY VOR R-200 to D8.0, then turn RIGHT within 10 NM to TNY VOR at the minimum holding altitude.					
Alt Set: IN (MB on req) Rwy Elev: 106 MB Trans level: FL 195 Trans alt: 18500'					
DME required.					MSA TNY VOR



RECOMMENDED ALTITUDES	
TNY DME	ALTITUDE
8.0	5700'
7.0	5370'
6.0	5030'
5.0	4700'
4.0	4360'
3.0	4030'



Gnd speed-Kts	70	90	100	120	140	160
Descent Angle 3.15°	390	502	557	669	780	892
MAP at VOR						
FAF to MAP	8.0	6:51	5:20	4:48	4:00	3:26

REIL PAPI-L	↑	TNY via 113.9 R-200	D8.0
-------------	---	----------------------------	-------------

State			STRAIGHT-IN LANDING		CIRCLE-TO-LAND	
MDA(H) 3740' (722')					Max Kts MDA(H)	
A	V1		V1600m	100	3740' (715')	V1 V1600m
B				135	4060' (1035')	V1 1/2 V2400m
C	V2		V3200m	180	5520' (2495')	V3 V4800m
D				205	7420' (4395')	V3 V4800m

CHANGES: Procedure title, comms, note added.