

## General Information

Location: MEXICALI MEX  
ICAO/IATA: MMML / MXL  
Lat/Long: N32° 37.8', W115° 14.5'  
Elevation: 74 ft

Airport Use: Public  
Daylight Savings: Observed  
UTC Conversion: +8:00 = UTC  
Magnetic Variation: 13.0° E  
Sectional Chart: Phoenix

Fuel Types: 100 Octane (LL), Jet A-1  
Customs: Yes  
Airport Type: IFR  
Landing Fee: No  
Control Tower: Yes  
Jet Start Unit: No  
LLWS Alert: No  
Beacon: Yes

Sunrise: 1353 Z  
Sunset: 0058 Z

## Runway Information

Runway: 10  
Length x Width: 8533 ft x 148 ft  
Surface Type: asphalt  
TDZ-Elev: 72 ft  
Lighting: Edge, REIL

Runway: 28  
Length x Width: 8533 ft x 148 ft  
Surface Type: asphalt  
TDZ-Elev: 71 ft  
Lighting: Edge, REIL

## Communication Information

ATIS: 127.600  
Mexicali Tower: 118.200  
Mexicali Approach: 118.200  
Mexicali Information: 122.300

Mazatlan Control ACC: 128.300 RCO  
Mexicali Information: 123.900 Flight Info Service

**TMA**

**JEPPESSEN**

8 JAN 21 **10-1B**

**MEXICALI, MEXICO**  
Gen Rodolfo Sanchez Taboada Intl

*ATIS <b>127.6</b>	*MEXICALI Approach <b>118.2</b>
-----------------------	------------------------------------

**SPEED RESTRICTIONS WITHIN MEXICO AIRSPACE**

**Maximum IAS unless otherwise depicted or authorized by ATC**

Below 3000' AGL within 10NM of any airport.....	200 KTS
Below 10,000' MSL within Mexico Airspace.....	250 KTS
Below 10,000' AGL within 30NM of any airport.....	250 KTS

**WITHIN MEXICALI TMA**

At or below 3100' MSL within 10NM of MXL VORDME.....	200 KTS
At or below 10,100' MSL within 25NM of MXL VORDME.....	250 KTS

**WITHIN TIJUANA TMA**

At or below 3500' MSL within 10NM of TIJ VORDME.....	200 KTS
At or below 10,500' MSL within 30NM of TIJ VORDME.....	250 KTS

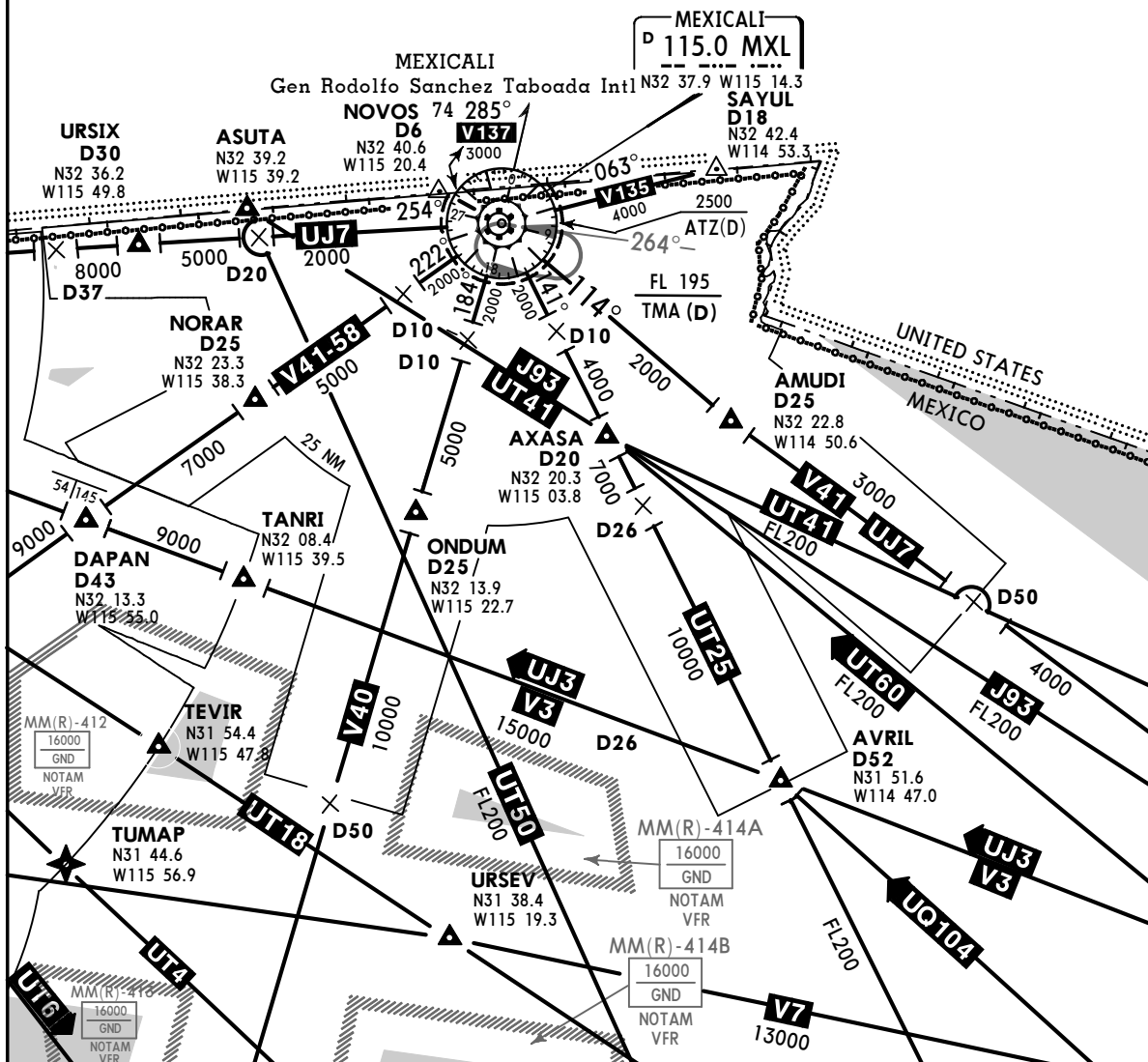
**TIJUANA TMA (D)**

UNCTL BELOW
4500' 25 NM-50 NM
2000' 10 NM-25 NM
GND 0 NM-10 NM

**MEXICALI TMA (D)**

UNCTL BELOW
1500' 10 NM-25 NM
GND 0 NM-25 NM

SID fixes should not be used for arrivals.



MMML/MXL

JEPPESEN

MEXICALI, MEXICO

GEN RODOLFO SANCHEZ TABOADA INTL

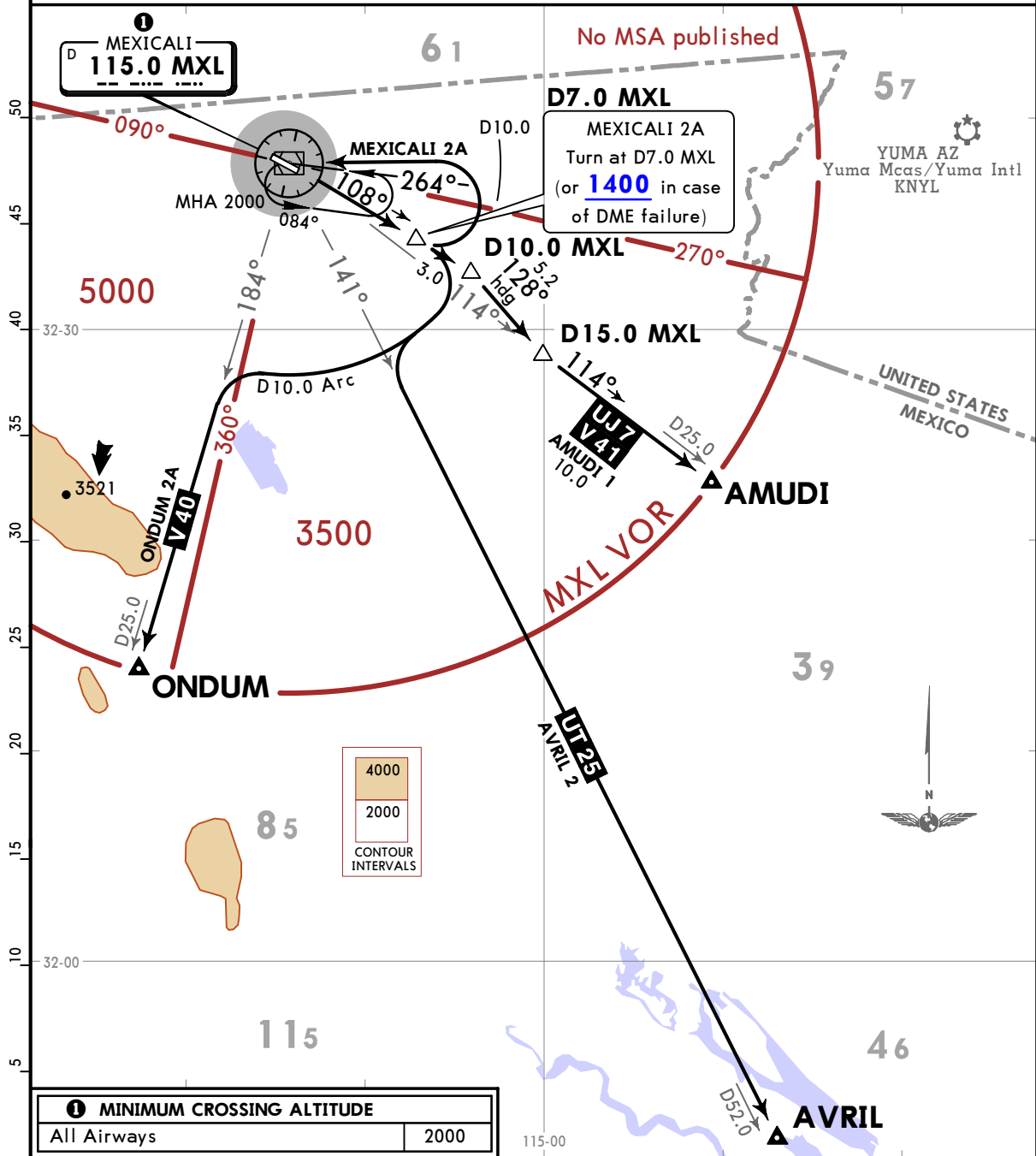
10-3

18 SEP 20

SID

Apt Elev 74	Trans alt: 18500
----------------	------------------

AMUDI 1 (AMUDI1) [AMUDI1], AVRIL 2 (AVRIL2) [AVRIL2]  
 MEXICALI 2A (MXL2A) [MXL2A]  
 ONDUM 2A (ONDUM2A) [ONDU2A]  
 DEPARTURES  
 (RWY 10)



<b>① MINIMUM CROSSING ALTITUDE</b>	
All Airways	2000

SID	INITIAL CLIMB
AMUDI 1	Climb via MXL R108 until D10.0 MXL, turn RIGHT heading 128° to intercept MXL R114 to AMUDI, and continue on assigned route or according to ATC instructions.
AVRIL 2 ONDUM 2A	Climb via MXL R108 until D7.0 MXL, turn RIGHT and proceed on D10.0 Arc to intercept the corresponding radial from MXL VOR to AVRIL or ONDUM and continue on assigned route or according to ATC instructions.
MEXICALI 2A	Climb via MXL R108 until D7.0 MXL (or 1400 in case of DME failure), then turn LEFT within D10.0 to MXL VOR. Depart MXL VOR at the MCA ① for the assigned route or according to ATC instructions.

CHANGES: None.

© JEPPESEN, 2019, 2020. ALL RIGHTS RESERVED.

MMML/MXL

JEPPESSEN

MEXICALI, MEXICO

GEN RODOLFO SANCHEZ TABOADA INTL

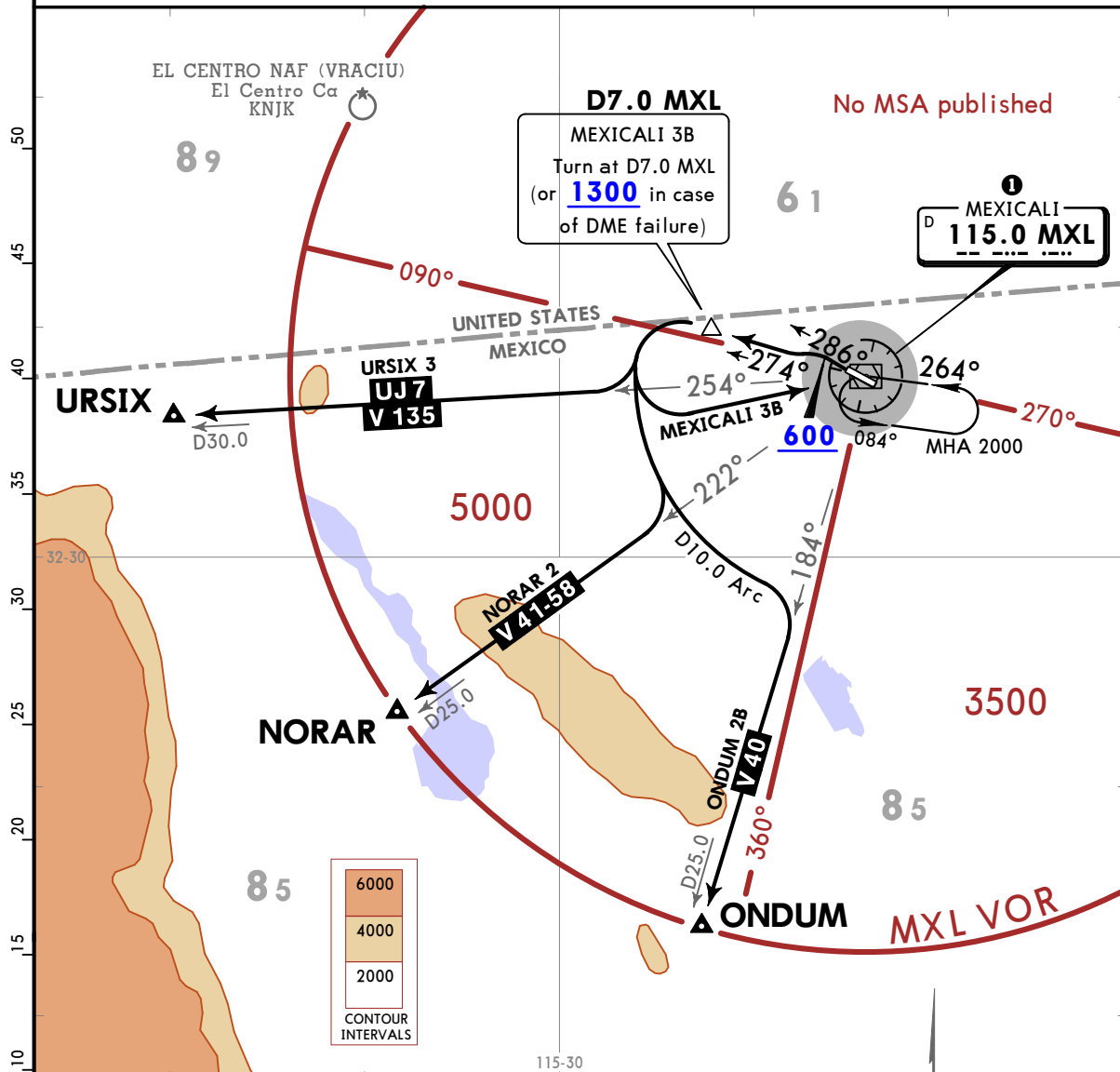
10-3A

18 SEP 20

SID

Apt Elev 74	Trans alt: 18500
----------------	------------------

MEXICALI 3B (MXL3B) [MXL3B], NORAR 2 (NORAR2) [NORAR2]  
 ONDUM 2B (ONDUM2B) [ONU2B], URSIX 3 (URSIX3) [URSIX3]  
 DEPARTURES  
 (RWY 28)



MINIMUM CROSSING ALTITUDE	
All Airways	2000

NORAR 2 SID requires a minimum climb gradient of 220 per NM to 6000.

Gnd speed-KT	75	100	150	200	250	300
220 per NM	275	367	550	733	917	1100

SID	INITIAL CLIMB
<b>MEXICALI 3B</b>	Climb via runway heading to 600, then turn LEFT and proceed on MXL R274 to D7.0 MXL (or 1300 in case of DME failure), then turn LEFT within D10.0 to MXL VOR. Depart MXL VOR at the MCA ① for the assigned route or according to ATC instructions.
<b>NORAR 2 ONDUM 2B URSIX 3</b>	Climb via runway heading to 600, then turn LEFT and proceed via MXL R274 to D7.0 MXL, turn LEFT on D10.0 Arc to intercept the corresponding radial from MXL VOR to NORAR, ONDUM, or URSIX. Continue on assigned route or according to ATC instructions.

CHANGES: URSIX SID renumbered.

**MMML/MXL**

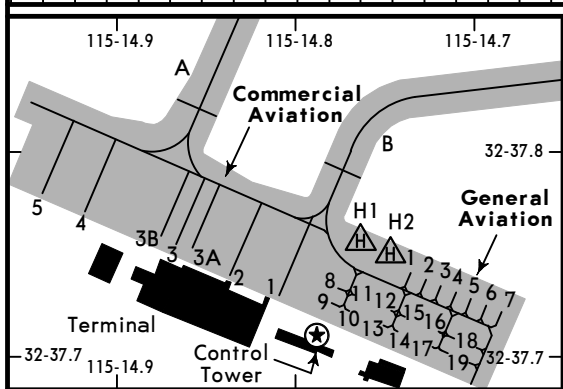
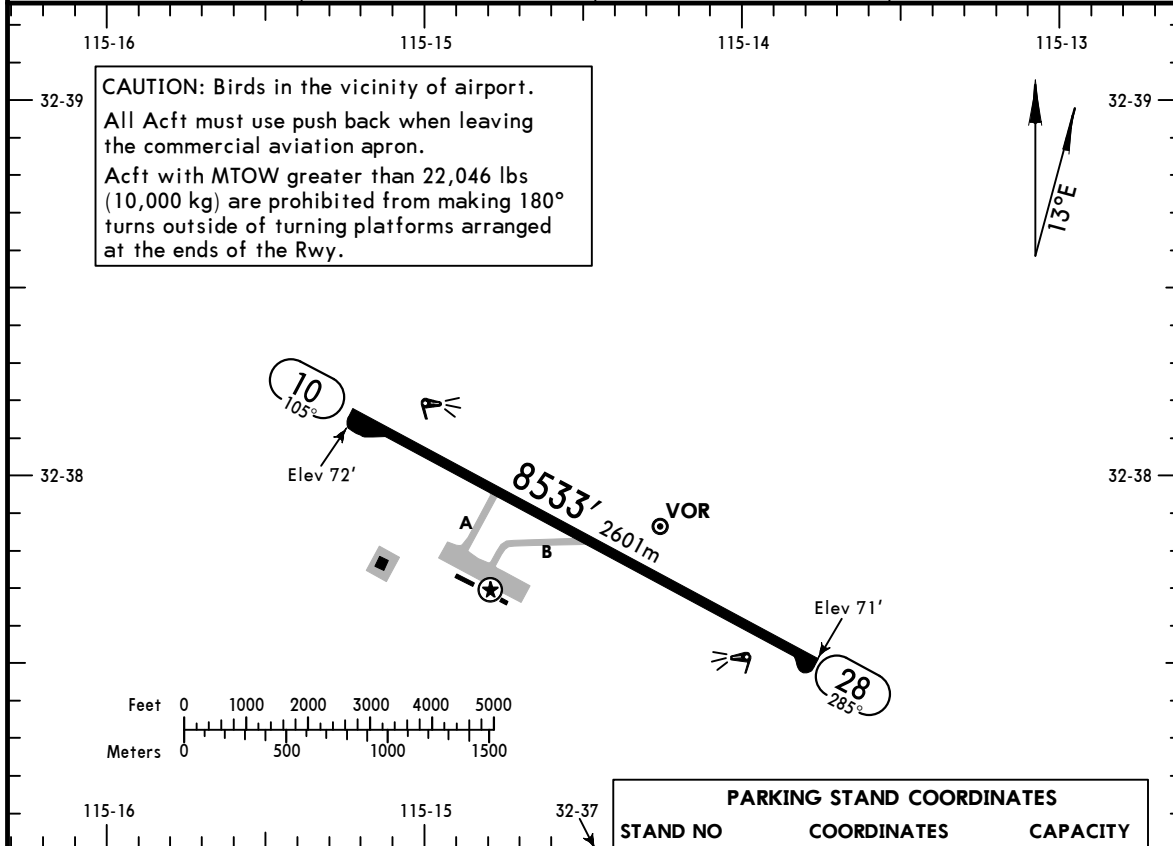
Apt Elev **74'**  
N32 37.8 W115 14.5

**JEPPESSEN**  
5 JUL 24  
Eff 11 JUL 10-9

**MEXICALI, MEXICO**

GEN RODOLFO SANCHEZ TABOADA INTL

*ATIS <b>127.6</b>	*MEXICALI FIS <b>123.9</b>	*MEXICALI Tower <b>118.2</b>	MAZATLAN Center <b>128.3</b>
-----------------------	-------------------------------	---------------------------------	---------------------------------



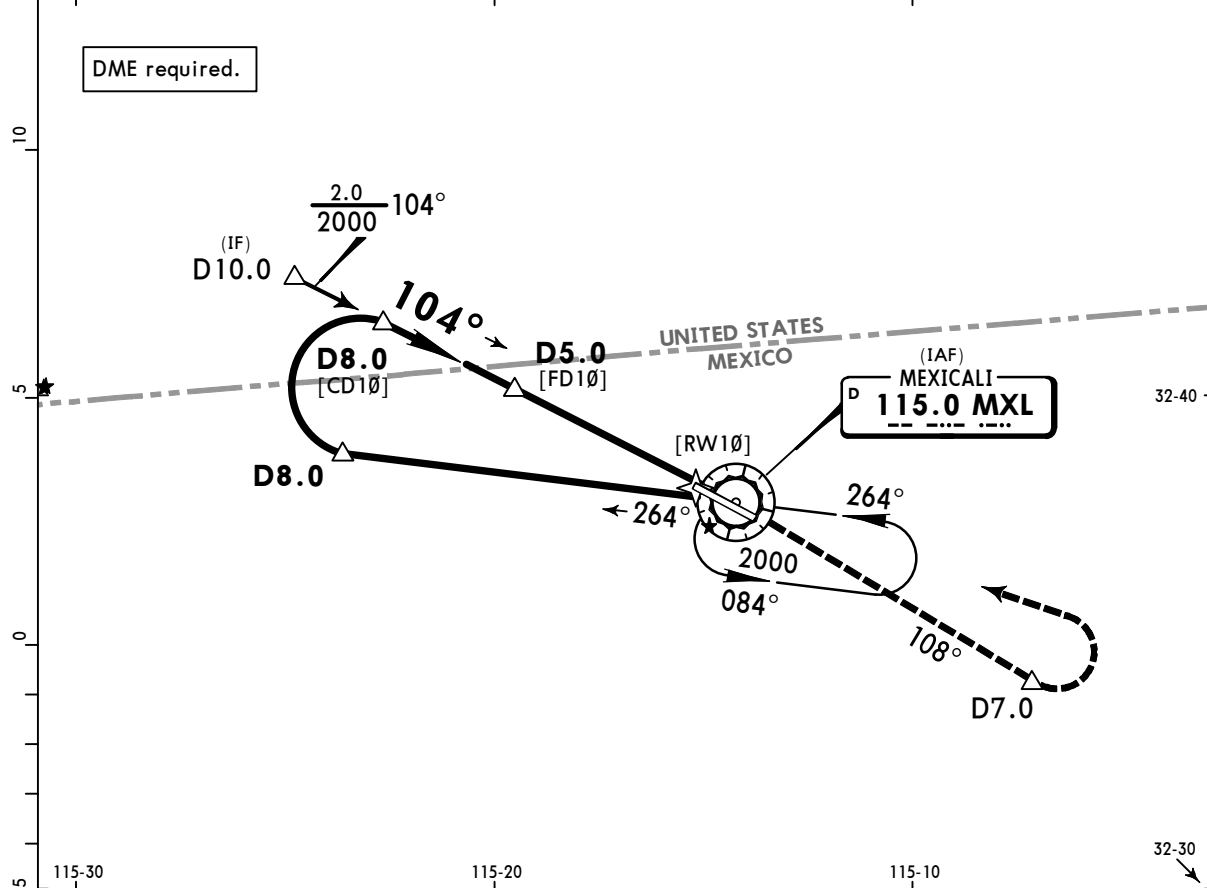
PARKING STAND COORDINATES		
STAND NO	COORDINATES	CAPACITY
<b>Commercial Aviation Apron</b>		
1, 2	N32 37.7 W115 14.8	A-321
3A	N32 37.7 W115 14.9	ERJ-145
3	N32 37.8 W115 14.9	A-321-200
3B	N32 37.8 W115 14.9	SU-100
4	N32 37.8 W115 14.9	B-737-800W
5	N32 37.8 W115 15.0	B-757-200
<b>General Aviation Apron</b>		
1 thru 7	N32 37.7 W115 14.7	C421
8 thru 11	N32 37.7 W115 14.8	C421
12 thru 19	N32 37.7 W115 14.7	C421
H1	N32 37.7 W115 14.8	B-212
H2	N32 37.7 W115 14.7	B-212

ADDITIONAL RUNWAY INFORMATION					
RWY		USABLE LENGTHS			WIDTH
		Threshold	Landing Beyond	TAKE-OFF	
10 28	HIRL REIL PAPI-L (angle 3.0°)				148' 45m

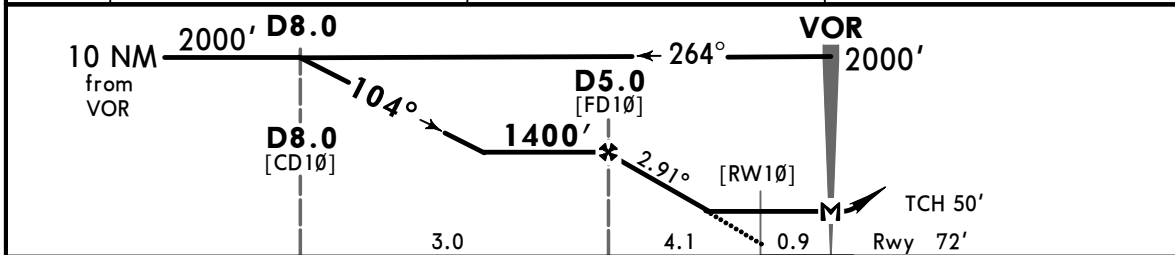
TAKE-OFF		FOR FILING AS ALTERNATE	
All Rwys			
1 & 2 Eng	600-2	A	800-2
3 & 4 Eng	300-1	B	
		C	
		D	

**MMML/MXL**  
**GEN RODOLFO SANCHEZ TABOADA INTL** **JEPPesen** **MEXICALI, MEXICO**  
 5 JUL 24 **13-1** **VOR Z Rwy 10**

*ATIS <b>127.6</b>	*MEXICALI FIS <b>123.9</b>	*MEXICALI Approach <b>118.2</b>	MAZATLAN Center <b>128.3</b> when App inop.	*MEXICALI Tower <b>118.2</b>
VOR MXL <b>115.0</b>	Final Apch Crs <b>104°</b>	<b>D5.0</b> <b>1400'</b> (1328')	MDA(H) <b>500'</b> (428')	Apt Elev 74' Rwy 72'
<b>MISSED APCH: Climb on MXL VOR R-108 to D7.0, then turn LEFT within 10 NM to MXL VOR to the minimum holding altitude.</b>				
Alt Set: MB (IN on req)	Apt Elev: 3 MB	Trans level: FL 195	Trans alt: 18500'	



115-30	115-20	115-10	32-40	32-30
MXL DME	5.0	4.0	3.0	
ALTITUDE	1400'	1090'	780'	



Gnd speed-Kts	70	90	100	120	140	160			
Descent Angle	2.91°	360	463	515	618	721	824		
MAP at VOR or FAF to MAP	5.0	4:17	3:20	3:00	2:30	2:09	1:53		
								REIL PAPI-L	↑
									MXL on <b>115.0</b> <b>D7.0</b>
									<b>R-108</b>

<b>STRAIGHT-IN LANDING RWY 10</b>			<b>CIRCLE-TO-LAND</b>		
MDA(H) <b>500'</b> (428')			MDA(H) _____		
A			Max Kts		
B	1		90	<b>580'</b> (506') -1	
C	1 1/4		120	<b>640'</b> (566') -1 1/2	
D	1 1/2		165	<b>640'</b> (566') -2	

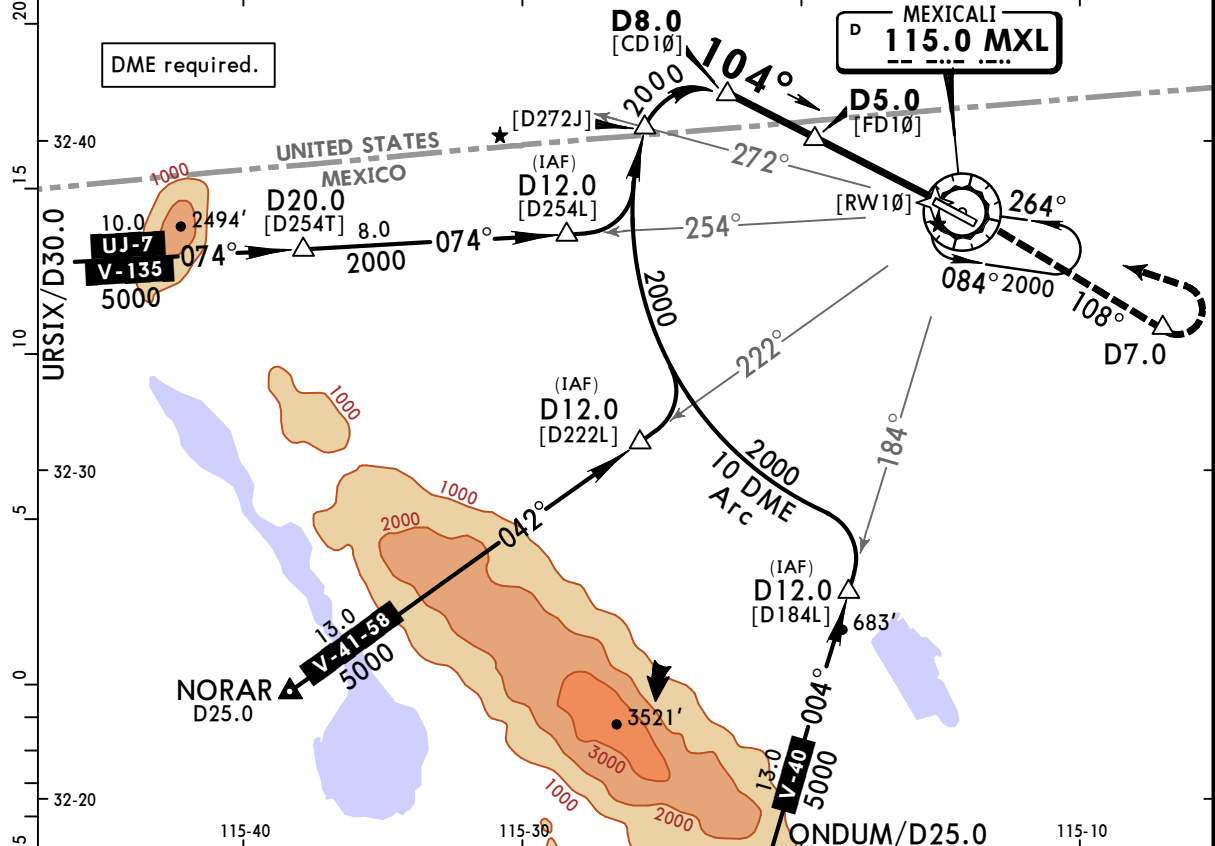
# MMML/MXL

## GEN RODOLFO SANCHEZ TABOADA INTL

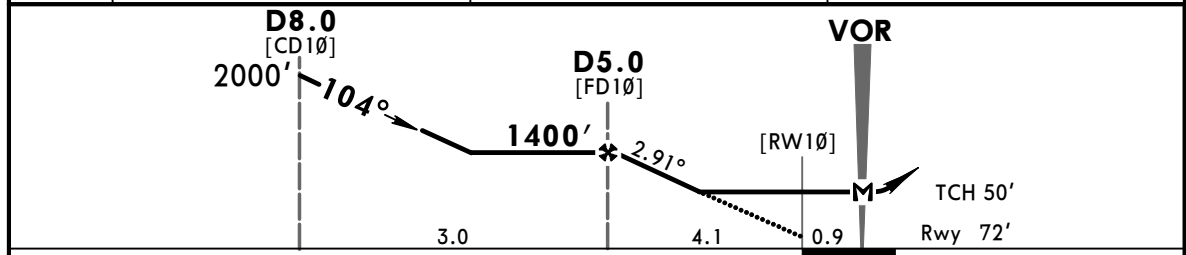
**JEPPESEN**  
5 JUL 24  
Eff 11 Jul

**MEXICALI, MEXICO**  
**VOR Y Rwy 10**

*ATIS <b>127.6</b>	*MEXICALI FIS <b>123.9</b>	*MEXICALI Approach <b>118.2</b>	MAZATLAN Center <b>128.3</b> when App inop.	*MEXICALI Tower <b>118.2</b>
VOR MXL <b>115.0</b>	Final Apch Crs <b>104°</b>	<b>D5.0</b> 1400' (1328')	MDA(H) <b>500'</b> (428')	Apt Elev 74' Rwy 72'
<b>MISSED APCH: Climb on MXL VOR R-108 to D7.0, then turn LEFT within 10 NM to MXL VOR to the minimum holding altitude.</b>				<p><b>1</b> No MSA Published</p> <p>MSA MXL VOR</p>
Alt Set: MB (IN on req) Rwy Elev: 3 MB Trans level: FL 195 Trans alt: 18500' 1. In case of DME failure at any point during the procedure, maintain last altitude and proceed to the station in accordance with ATC instructions.				



MXL DME	5.0	4.0	3.0
ALTITUDE	1400'	1090'	780'



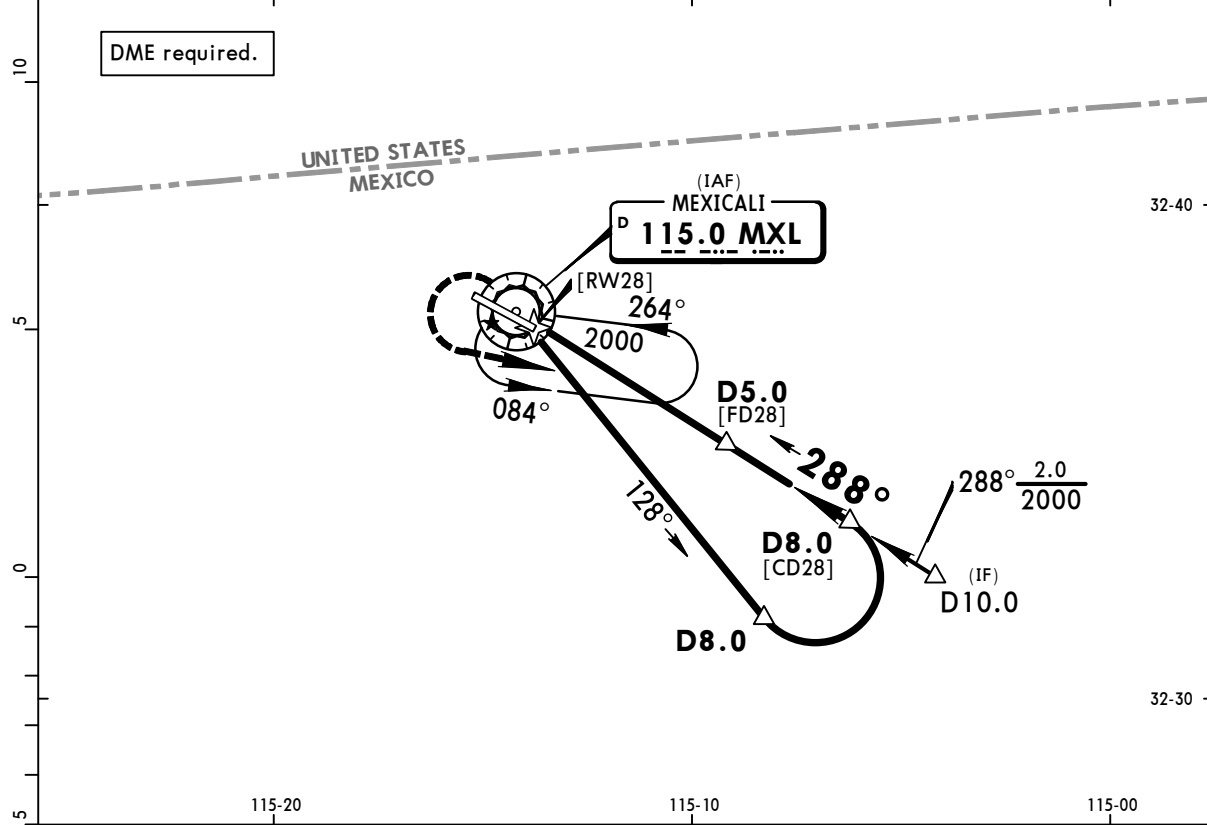
Gnd speed-Kts	70	90	100	120	140	160	REIL PAPI-L	↑ on <b>115.0</b> <b>D7.0</b>	
Descent Angle	2.91°	360	463	515	618	721			824
MAP at VOR									
FAF to MAP	5.0	4:17	3:20	3:00	2:30	2:09	1:53		

STRAIGHT-IN LANDING RWY 10		CIRCLE-TO-LAND	
MDA(H) <b>500'</b> (428')		Max Kts	MDA(H)
A	1	90	<b>580'</b> (506') - 1
B		120	
C	1¼	140	<b>640'</b> (566') - 1½
D	1½	165	<b>640'</b> (566') - 2

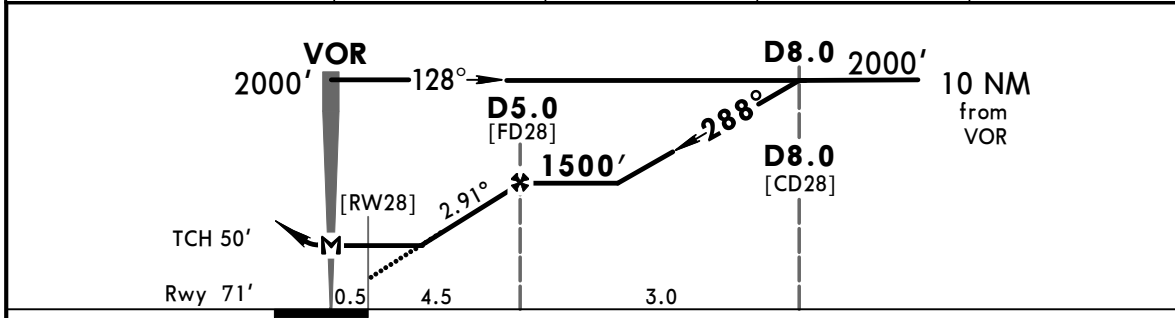


**MMML/MXL** **JEPPESEN** **MEXICALI, MEXICO**  
 GEN RODOLFO SANCHEZ TABOADA INTL **5 JUL 24** **13-3** **VOR Z Rwy 28**  
**Eff 11 Jul**

*ATIS <b>127.6</b>	*MEXICALI FIS <b>123.9</b>	*MEXICALI Approach <b>118.2</b>	MAZATLAN Center <b>128.3</b> when App inop.	*MEXICALI Tower <b>118.2</b>
VOR MXL <b>115.0</b>	Final Apch Crs <b>288°</b>	Minimum Alt <b>D5.0</b> <b>1500'</b> (1429')	MDA(H) <b>520'</b> (449')	Apt Elev 74' Rwy 71'
<b>MISSED APCH:</b> Climbing LEFT turn to intercept outbound MXL VOR R-128 and proceed on the approach track to the minimum holding altitude.				<p><b>1</b> No MSA Published MSA MXL VOR</p>
Alt Set: MB (IN on req)		Rwy Elev: 3 MB	Trans level: FL 195	Trans alt: 18500'



MXL DME	5.0	4.0	3.0	2.0
ALTITUDE	1500'	1190'	880'	570'



Gnd speed-Kts	70	90	100	120	140	160	REIL PAPI-L		<b>MXL 115.0 R-128</b>	
Descent Angle	2.91°	360	463	515	618	721				824
MAP at VOR										
D5.0 to MAP	5.0	4:17	3:20	3:00	2:30	2:09				1:53

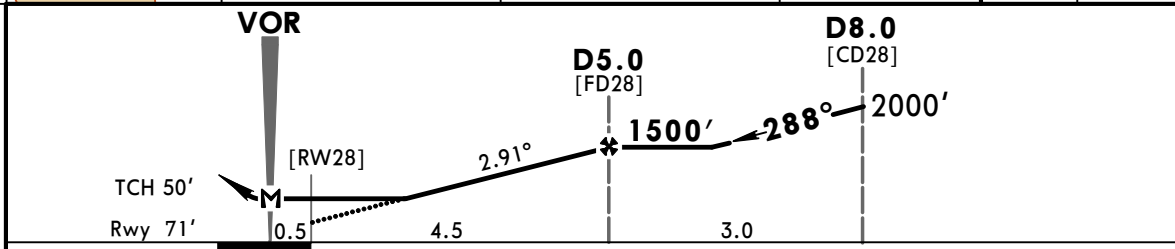
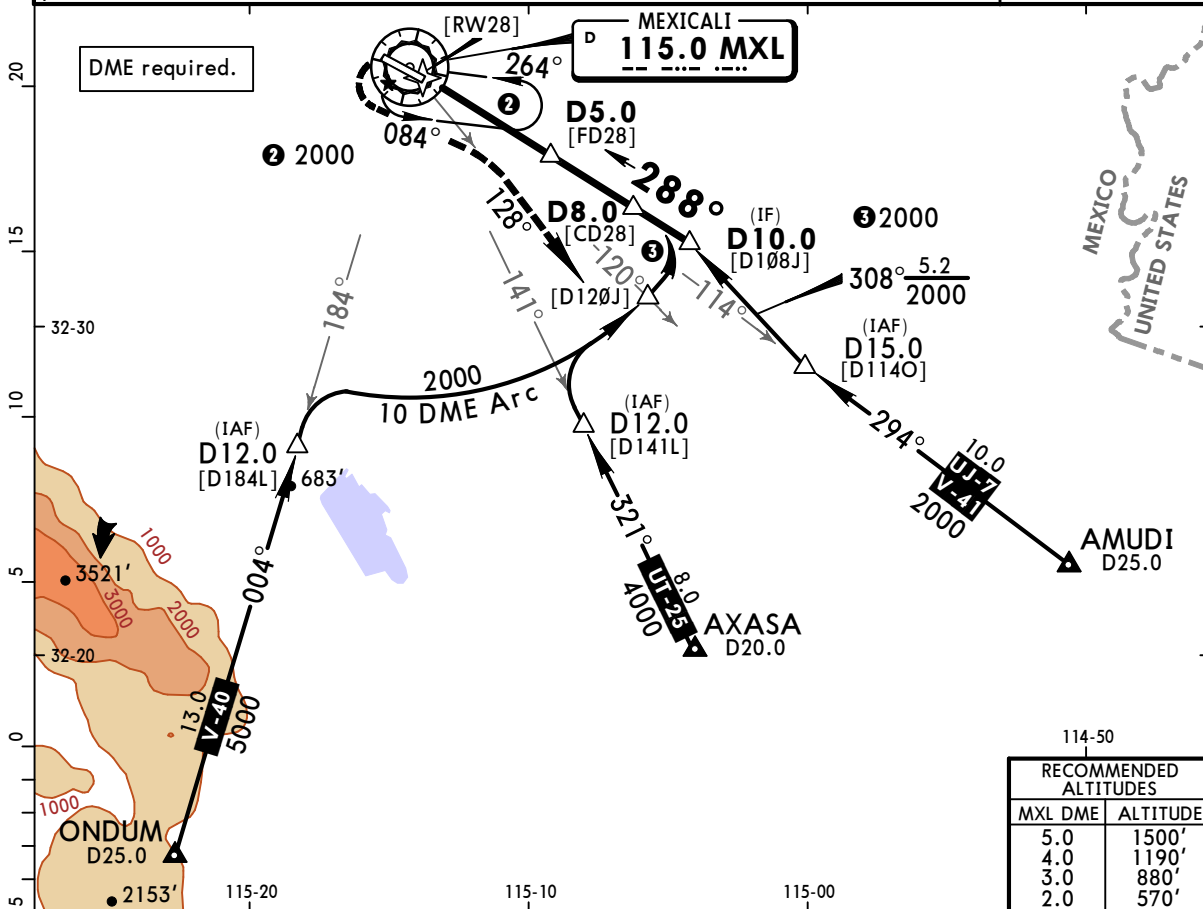
STRAIGHT-IN LANDING RWY 28			CIRCLE-TO-LAND		
MDA(H) <b>520'</b> (449')			MDA(H)		
A	1		Max Kts	_____	
B	1		90	<b>580'</b> (506') - 1	
C	1¼		120	<b>640'</b> (566') - 1½	
D	1½		140	<b>640'</b> (566') - 2	
			165		

# MMML/MXL

GEN RODOLFO SANCHEZ TABOADA INTL

**JEPPESSEN MEXICALI, MEXICO**  
 5 JUL 24 (13-4)  
**VOR Y Rwy 28**

*ATIS <b>127.6</b>	*MEXICALI FIS <b>123.9</b>	*MEXICALI Approach <b>118.2</b>	MAZATLAN Center <b>128.3</b> when App inop.	*MEXICALI Tower <b>118.2</b>
VOR MXL <b>115.0</b>	Final Apch Crs <b>288°</b>	D5.0 <b>1500'</b> (1429')	MDA(H) <b>520'</b> (449')	Apt Elev 74' Rwy 71'
<b>MISSED APCH: Climbing LEFT turn to intercept MXL VOR R-128                  outbound and proceed on the VOR DME 1 Rwy 28                  track to the minimum holding altitude.</b>				① No MSA Published  MSA MXL VOR
Alt Set: MB (IN on req) Rwy Elev: 3 MB Trans level: FL 195 Trans alt: 18500' 1. In case of DME failure at any point during the procedure, maintain last altitude and proceed to the station in accordance with ATC instructions.				

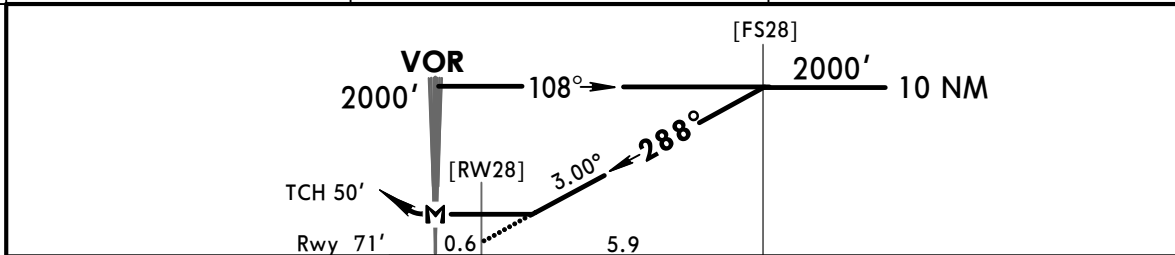
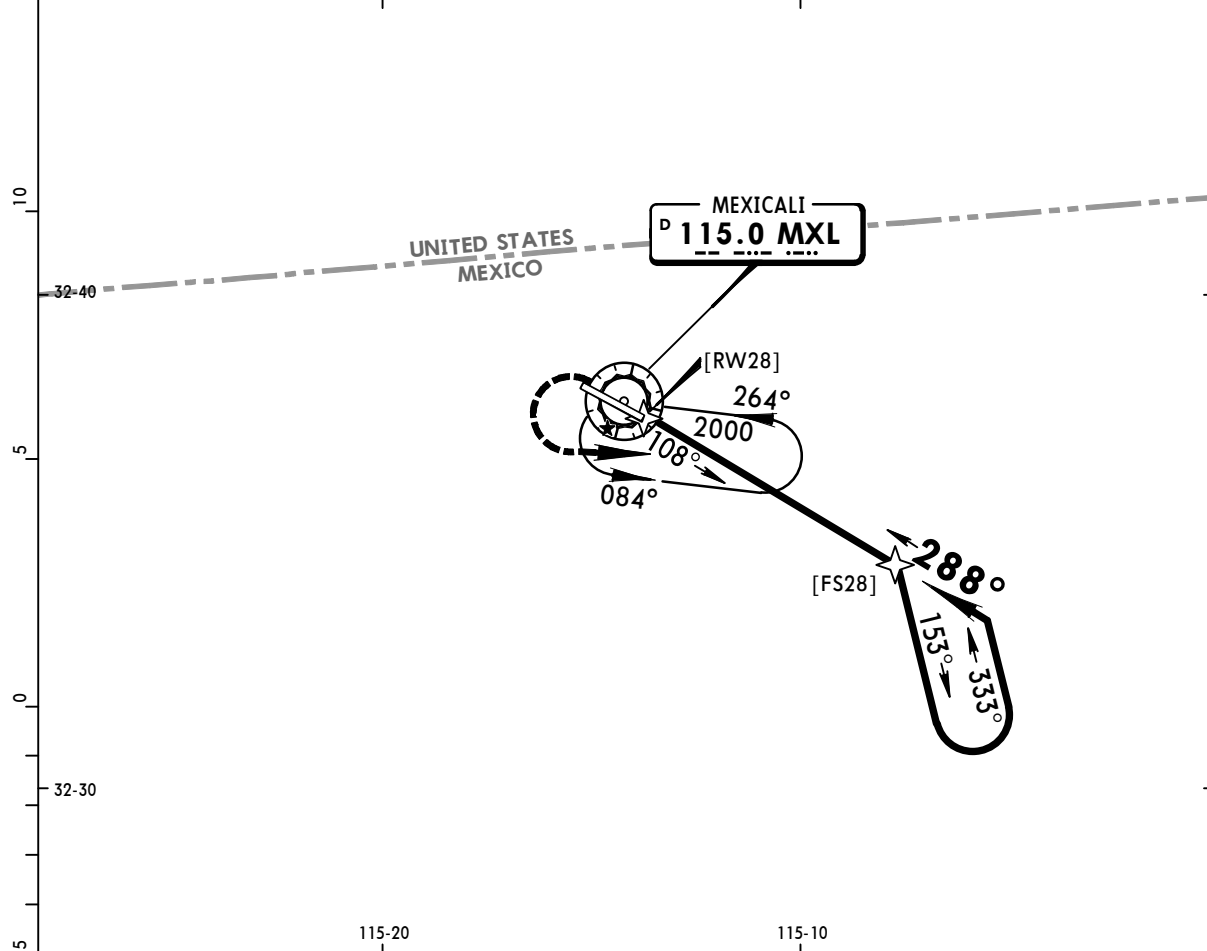


Gnd speed-Kts	70	90	100	120	140	160	REIL PAPI-L	 MXL <b>115.0</b> <b>R-128</b>
Descent Angle 2.91°	360	463	515	618	721	824		
MAP at VOR or D5.0 to MAP	5.0	4:17	3:20	3:00	2:30	2:09		

STRAIGHT-IN LANDING RWY 28		CIRCLE-TO-LAND	
MDA(H) <b>520'</b> (449')		Max Kts	MDA(H)
A	1	90	<b>580'</b> (506') -1
B	1	120	<b>640'</b> (566') -1½
C	1¼	140	<b>640'</b> (566') -1½
D	1½	165	<b>640'</b> (566') -2

**MMML/MXL** **JEPPESEN MEXICALI, MEXICO**  
 GEN RODOLFO SANCHEZ TABOADA INTL **5 JUL 24** **(13-5)** **VOR X Rwy 28**  
**Eff 11 Jul**

*ATIS <b>127.6</b>	*MEXICALI FIS <b>123.9</b>	*MEXICALI Approach <b>118.2</b>	MAZATLAN Center <b>128.3</b> when App inop.	*MEXICALI Tower <b>118.2</b>
VOR MXL <b>115.0</b>	Final Apch Crs <b>288°</b>	No FAF	MDA(H) <b>580'</b> (509')	Apt Elev 74' Rwy 71'
<b>MISSED APCH:</b> Climbing LEFT turn to intercept outbound MXL VOR R-108 and proceed on the approach track to the minimum holding altitude.				<p>① No MSA Published MSA MXL VOR</p>
Alt Set: MB (IN on req) Rwy Elev: 3 MB Trans level: FL 195 Trans alt: 18500'				



Gnd speed-Kts	70	90	100	120	140	160	REIL PAPI-L		<b>MXL 115.0 R-108</b>
Descent Angle 3.00°	372	478	531	637	743	849			
MAP at VOR									

STRAIGHT-IN LANDING RWY 28		CIRCLE-TO-LAND	
MDA(H) <b>580'</b> (509')		Max Kts	MDA(H)
A	1	90	<b>580'</b> (506') - 1
B		120	
C	1½	140	<b>640'</b> (566') - 1½
D		165	<b>640'</b> (566') - 2

# MMML/MXL

## GEN RODOLFO SANCHEZ TABOADA INTL

**JEPPESEN**

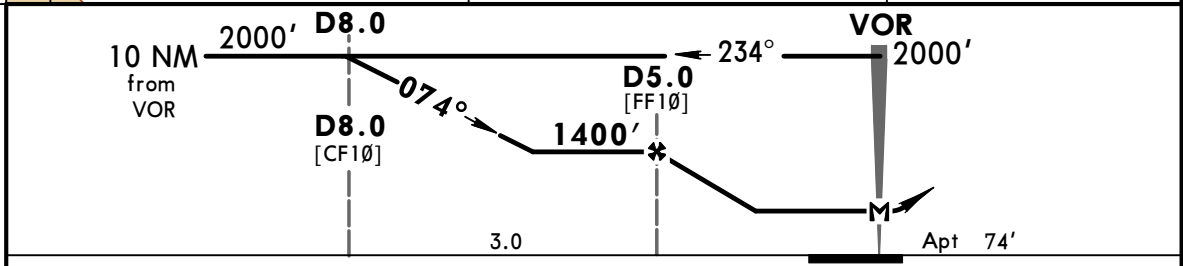
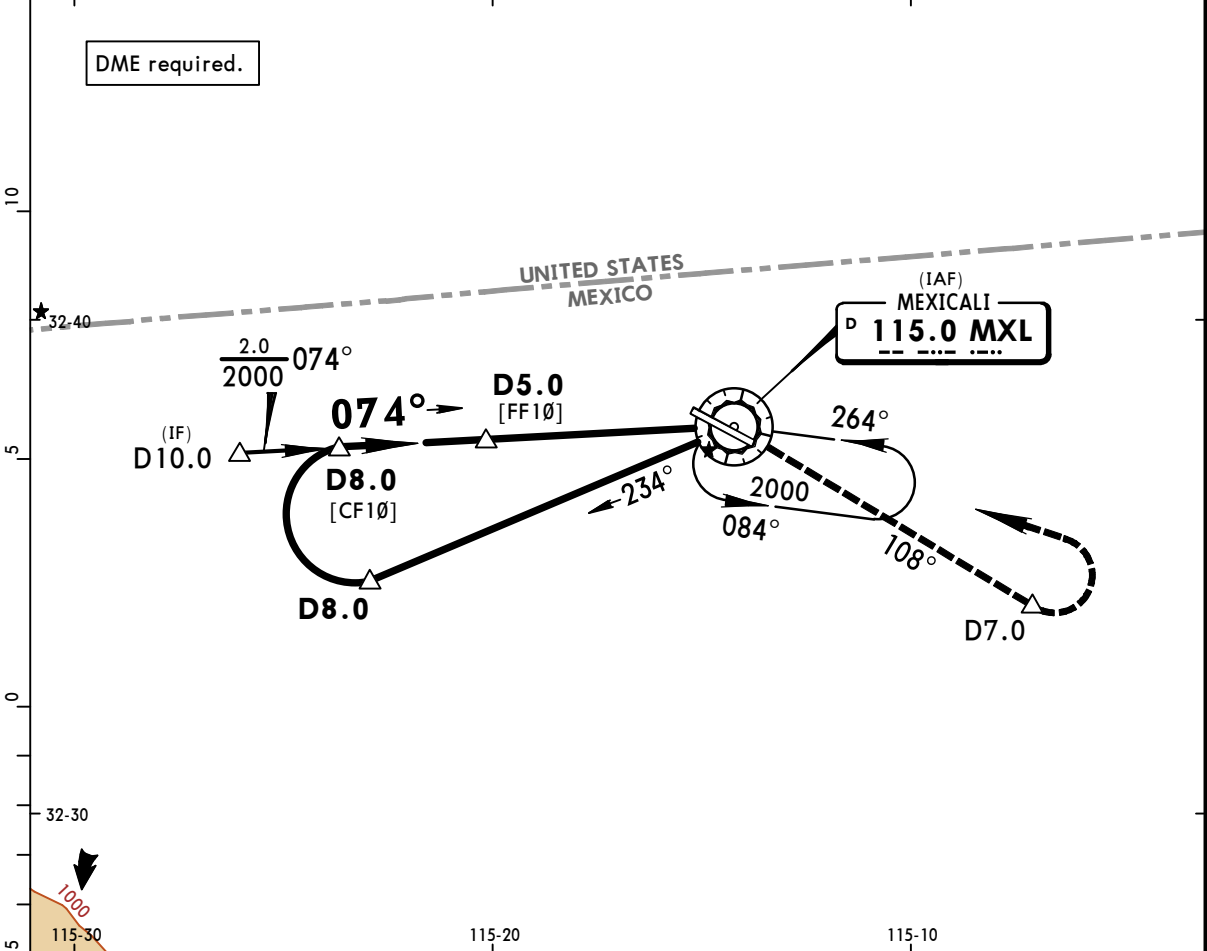
5 JUL 24

Eff 11 Jul

**MEXICALI, MEXICO**

**VOR X Rwy 10**

*ATIS <b>127.6</b>	*MEXICALI FIS <b>123.9</b>	*MEXICALI Approach <b>118.2</b>	MAZATLAN Center <b>128.3</b> when App inop.	*MEXICALI Tower <b>118.2</b>
VOR MXL <b>115.0</b>	Final Apch Crs <b>074°</b>	Minimum Alt <b>D5.0</b> 1400' (1326')	MDA(H) Refer to Minimums	Apt Elev 74'
<b>MISSED APCH: Climb on MXL VOR R-108 to D7.0, then turn LEFT within 10 NM to MXL VOR to the minimum holding altitude.</b>				<p>① No MSA Published</p> <p>MSA MXL VOR</p>
Alt Set: MB (IN on req)	Apt Elev: 3 MB	Trans level: FL 195	Trans alt: 18500'	



	Lighting - Refer to Airport Chart	↑	MXL on <b>115.0</b>	<b>D7.0</b>
MAP at VOR			<b>R-108</b>	

		CIRCLE-TO-LAND	
	Max Kts	MDA(H)	
A	90	<b>580'</b> (506') -1	
B	120	<b>640'</b> (566') -1½	
C	140	<b>640'</b> (566') -2	
D	165	<b>640'</b> (566') -2	

CHANGES: DME note added, procedure title, CNFs.