

General Information

Location: DURANGO MEX
ICAO/IATA: MMDO / DGO
Lat/Long: N24° 07.6', W104° 31.6'
Elevation: 6104 ft

Airport Use: Public
Daylight Savings: Not Observed
UTC Conversion: +6:00 = UTC
Magnetic Variation: 7.0° E

Fuel Types: 100-130 Octane, Jet A-1
Customs: Yes
Airport Type: IFR
Landing Fee: No
Control Tower: Yes
Jet Start Unit: No
LLWS Alert: No
Beacon: Yes

Sunrise: 1301 Z
Sunset: 0024 Z

Runway Information

Runway: 03
Length x Width: 9534 ft x 148 ft
Surface Type: asphalt
TDZ-Elev: 6104 ft
Lighting: Edge, REIL

Runway: 21
Length x Width: 9534 ft x 148 ft
Surface Type: asphalt
TDZ-Elev: 6101 ft
Lighting: Edge, REIL

Communication Information

ATIS: 132.100
Durango Tower: 118.100
Durango Approach: 118.100
Mazatlan Control ACC: 124.200 RCO
Durango Information: 122.300

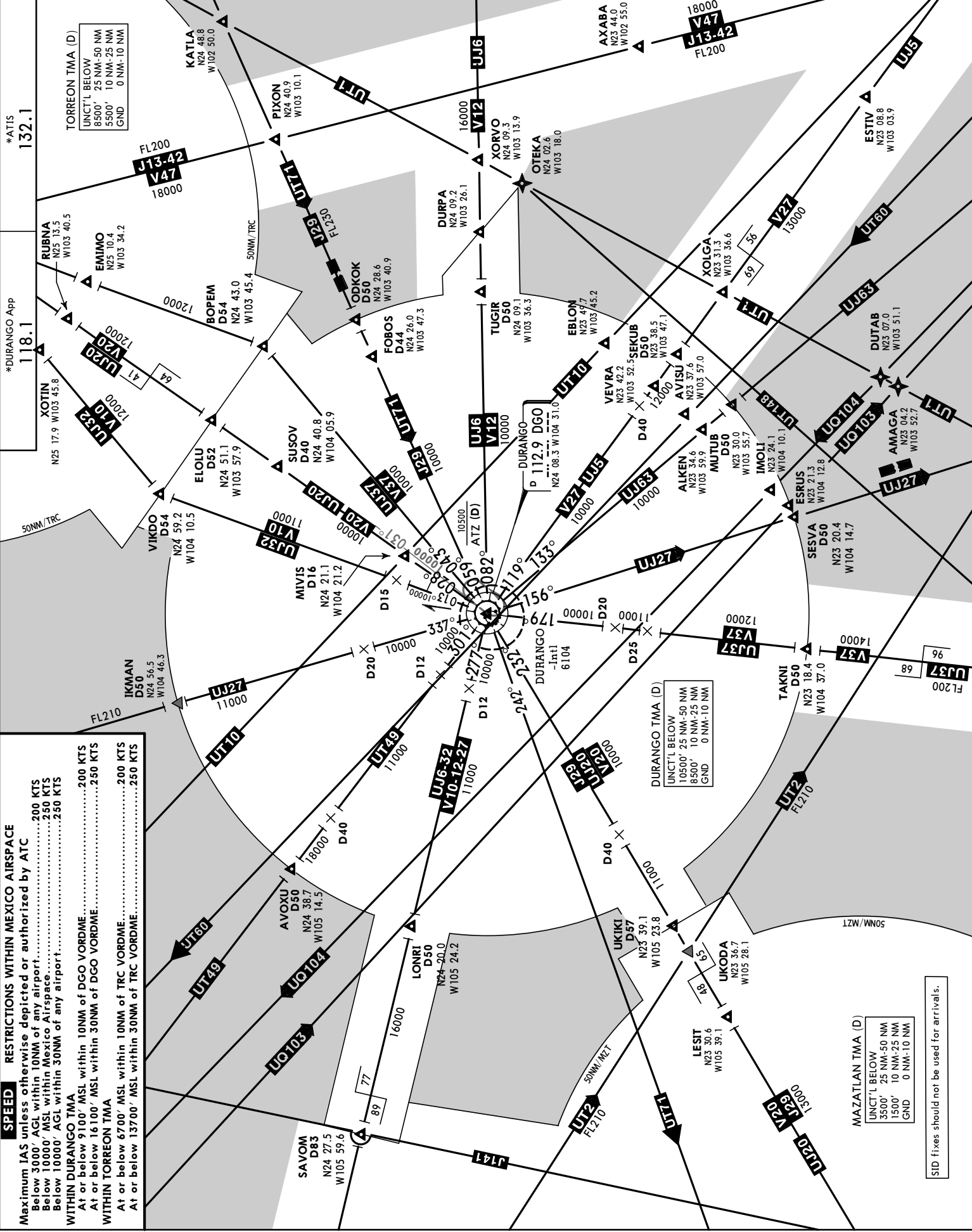
Mexico Control ACC: 123.900 RCO
Monterrey Control ACC: 126.400 RCO
Mazatlan Control ACC: 126.500 RCO

TMA

10-1B

11 DEC 20

DURANGO, MEXICO



SPEED RESTRICTIONS WITHIN MEXICO AIRSPACE
 Maximum IAS unless otherwise depicted or authorized by ATC
 Below 3000' AGL within 10NM of any airport.....200 KTS
 Below 10000' MSL within Mexico Airspace.....250 KTS
 Below 10000' AGL within 30NM of any airport.....250 KTS

WITHIN DURANGO TMA
 At or below 9100' MSL within 10NM of DGO VORDME.....200 KTS
 At or below 16100' MSL within 30NM of DGO VORDME.....250 KTS

WITHIN TORREON TMA
 At or below 6700' MSL within 10NM of TRC VORDME.....200 KTS
 At or below 13700' MSL within 30NM of TRC VORDME.....250 KTS

DURANGO TMA (D)
 UNCT'L BELOW
 10500' 25 NM-50 NM
 8500' 10 NM-25 NM
 GND 0 NM-10 NM

MAZATLAN TMA (D)
 UNCT'L BELOW
 3500' 25 NM-50 NM
 1500' 10 NM-25 NM
 GND 0 NM-10 NM

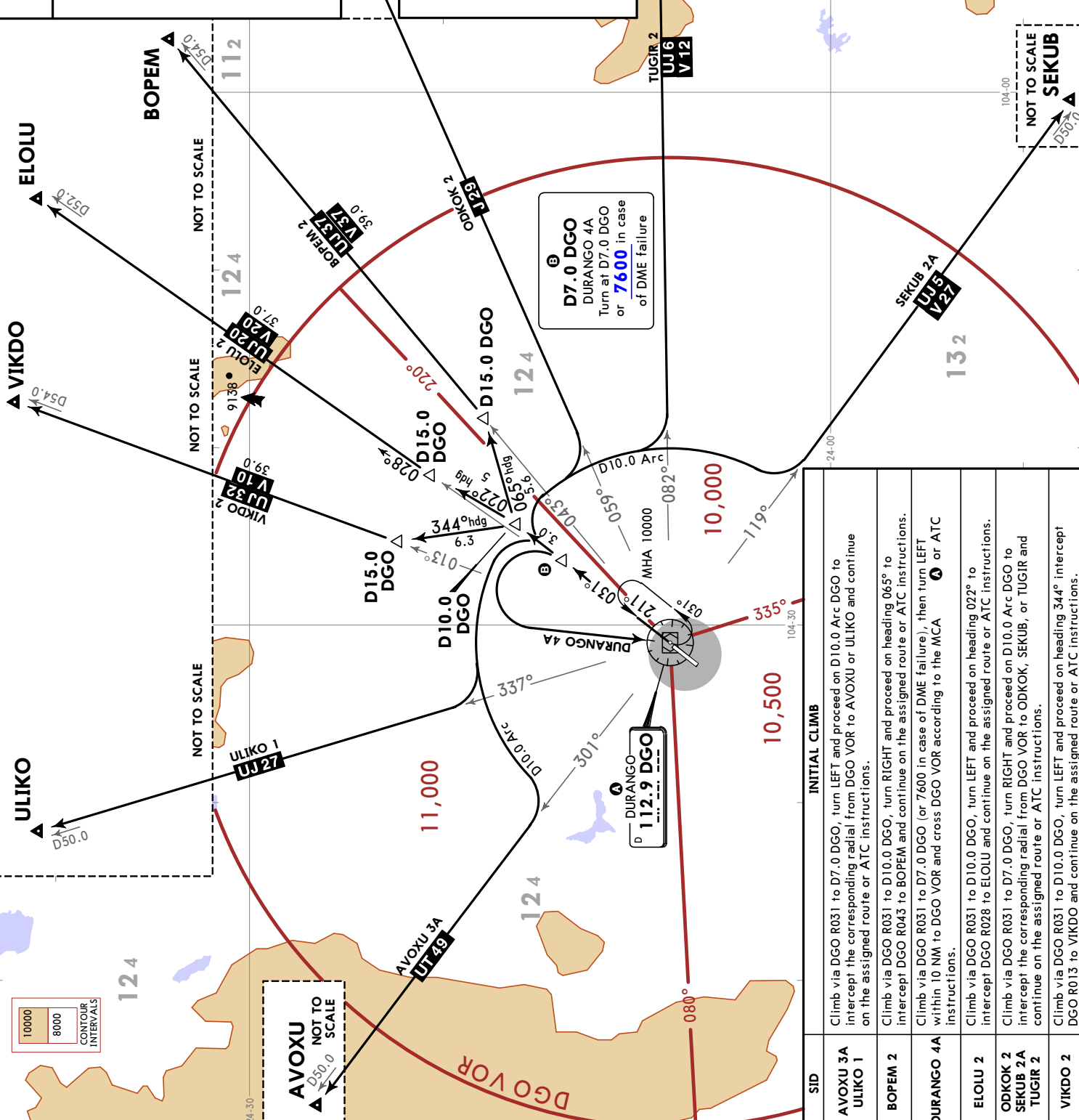
SID fixes should not be used for arrivals.

Apt Elev
6104

Trans alt: 18500

AVOXU 3A (AVOXU3A) [AVOX3A]
BOPEM 2 (BOPEM2) [BOPEM2]
DURANGO 4A (DGO4A) [DGO4A]
ELOLU 2 (ELOLU2) [ELOLU2]
ODKOK 2 (ODKOK2) [ODKOK2]
SEKUB 2A (SEKUB2A) [SEKU2A]
TUGIR 2 (TUGIR2) [TUGIR2]
ULIKO 1 (ULIKO1) [ULIKO1]
VIKDO 2 (VIKDO2) [VIKDO2]

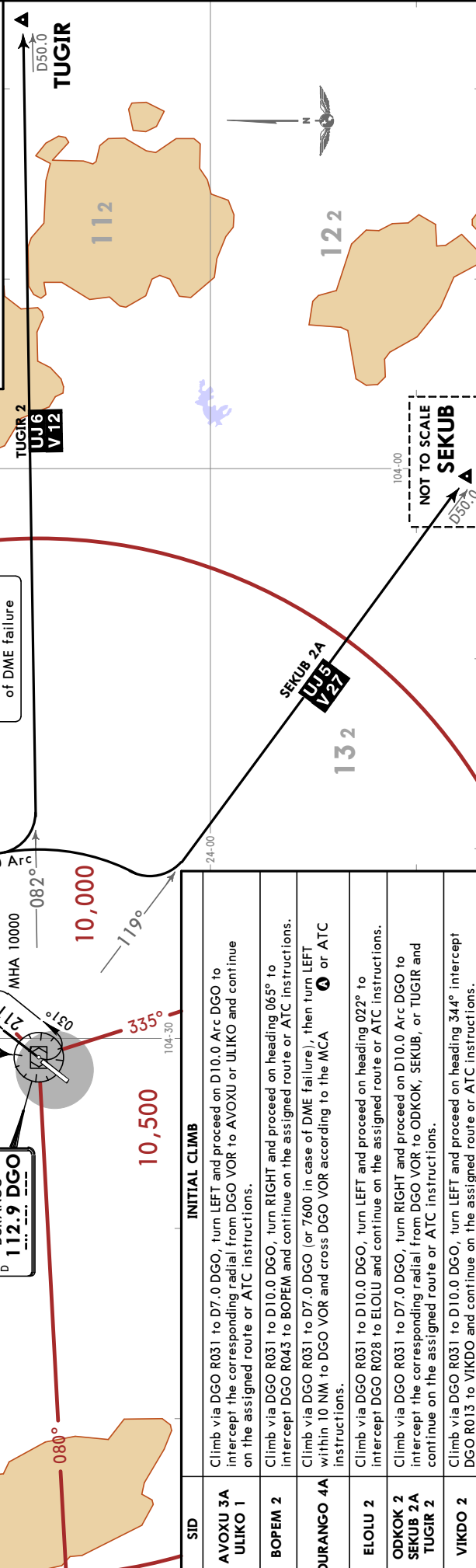
DEPARTURES (RWY 03)



NOT TO SCALE

ODKOK

MINIMUM CROSSING ALTITUDE	
VIKDO	V-10
TRC	V-20
BOPEM	V-37
SLW	J-29
CDR	V-12
ZCL	V-27
AGU	UJ-5
GDL	UJ-63
TNY	UJ-27
MZT	V-37
CUL	V-20
NABAS	UJ-20, J-29
ELQ	UJ-6-32
	UT-49
	UJ-27
	8900

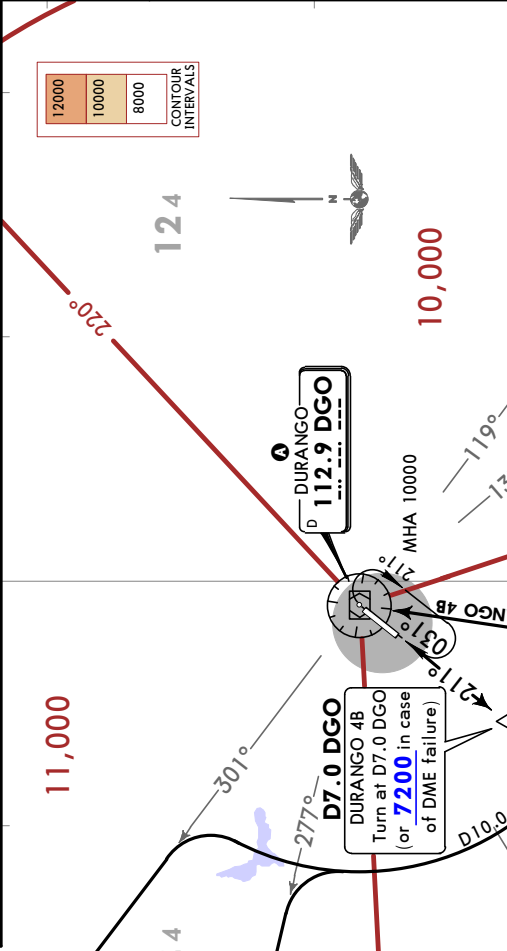


SID	INITIAL CLIMB
AVOXU 3A ULIKO 1	Climb via DGO R031 to D7.0 DGO, turn LEFT and proceed on D10.0 Arc DGO to intercept the corresponding radial from DGO VOR to AVOXU or ULIKO and continue on the assigned route or ATC instructions.
BOPEM 2	Climb via DGO R031 to D10.0 DGO, turn RIGHT and proceed on heading 065° to intercept DGO R043 to BOPEM and continue on the assigned route or ATC instructions.
DURANGO 4A	Climb via DGO R031 to D7.0 DGO (or 7600 in case of DME failure), then turn LEFT within 10 NM to DGO VOR and cross DGO VOR according to the MCA Δ or ATC instructions.
ELOLU 2	Climb via DGO R031 to D10.0 DGO, turn LEFT and proceed on heading 022° to intercept DGO R028 to ELOLU and continue on the assigned route or ATC instructions.
ODKOK 2 SEKUB 2A TUGIR 2	Climb via DGO R031 to D7.0 DGO, turn RIGHT and proceed on D10.0 Arc DGO to intercept the corresponding radial from DGO VOR to ODKOK, SEKUB, or TUGIR and continue on the assigned route or ATC instructions.
VIKDO 2	Climb via DGO R031 to D10.0 DGO, turn LEFT and proceed on heading 344° intercept DGO R013 to VIKDO and continue on the assigned route or ATC instructions.

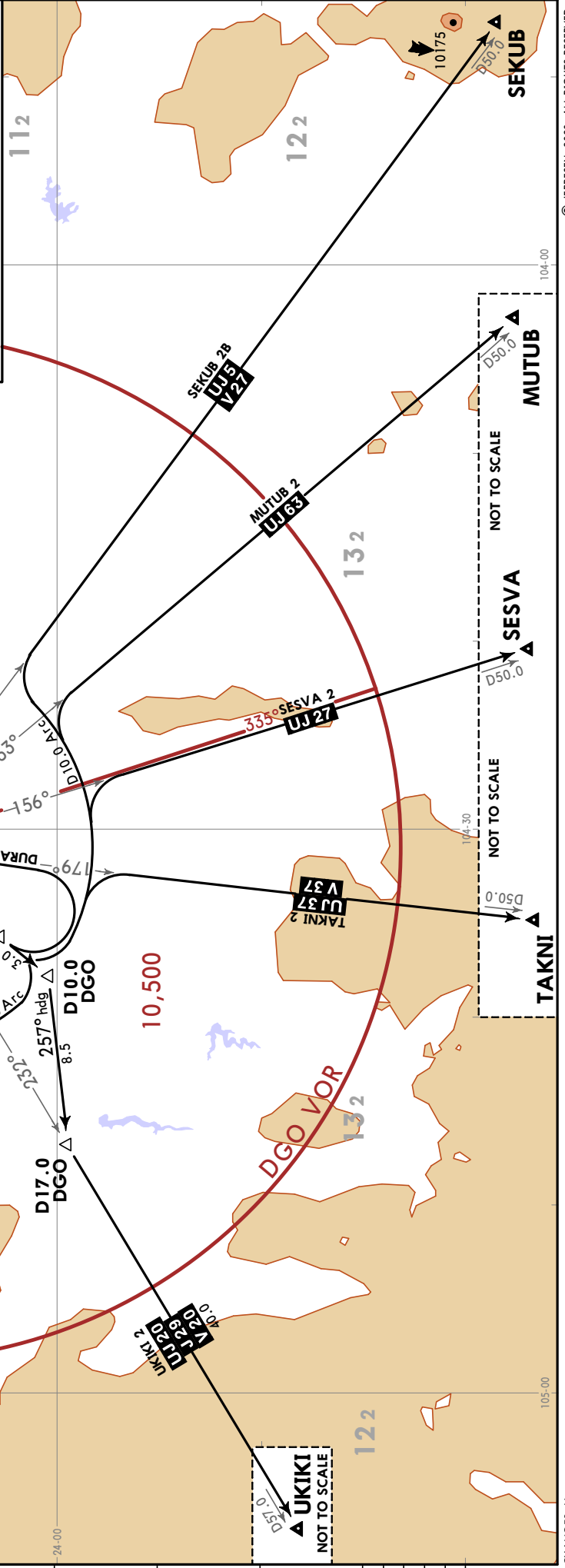
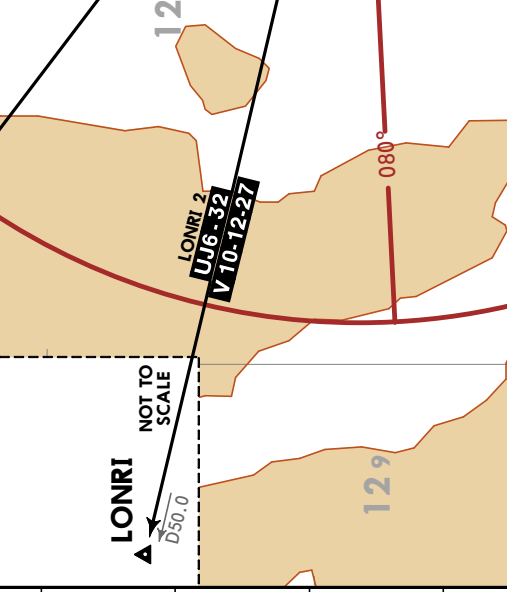
Trans alt: 18500
Apt Elev 6104
AVOXU 3B (AVOXU3B) [AVOX3B]
DURANGO 4B (DGO4B) [DGO4B]
LONRI 2 (LONRI2) [LONRI2]
MUTUB 2 (MUTUB2) [MUTUB2]
SEKUB 2B (SEKUB2B) [SEKU2B]
SESVA 2 (SESVA2) [SESVA2]
TAKNI 2 (TAKNI2) [TAKNI2]
UKIKI 2 (UKIKI2) [UKIKI2]
DEPARTURES (RWY 21)

	MINIMUM CROSSING ALTITUDE
VIKDO	V-10
TRC	UJ-32
BOPEM	UJ-20
SLW	UJ-37
CDR	J-29
ZCL	UJ-6
AGU	UJ-5
GDL	UJ-63
TNY	UJ-27
MZT	UJ-37
CUL	UJ-20, J-29
NABAS	UJ-6-32
ELQ	UT-49
	UJ-27

SID	INITIAL CLIMB
AVOXU 3B LONRI 2	Climb via DGO R211 to D7.0 DGO, turn RIGHT and proceed on D10.0 Arc DGO to intercept the corresponding radial from DGO VOR to AVOXU or LONRI and continue on the assigned route or ATC instructions.
DURANGO 4B	Climb via DGO R211 to D7.0 DGO (or 7200 in case of DME failure), then turn LEFT within 10 NM to DGO VOR and cross DGO VOR according to the MCA or ATC instructions.
MUTUB 2 SEKUB 2B SESVA 2 TAKNI 2	Climb via DGO R211 to D7.0 DGO, turn LEFT and proceed on D10.0 Arc DGO to intercept the corresponding radial from DGO VOR to MUTUB, SEKUB, SESVA, or TAKNI and continue on the assigned route or ATC instructions.
UKIKI 2	Climb via DGO R211 to D10.0 DGO, turn RIGHT and proceed on heading 257° to intercept DGO R232 to UKIKI and continue on the assigned route or ATC instructions.



SID	INITIAL CLIMB
AVOXU 3B LONRI 2	Climb via DGO R211 to D7.0 DGO, turn RIGHT and proceed on D10.0 Arc DGO to intercept the corresponding radial from DGO VOR to AVOXU or LONRI and continue on the assigned route or ATC instructions.
DURANGO 4B	Climb via DGO R211 to D7.0 DGO (or 7200 in case of DME failure), then turn LEFT within 10 NM to DGO VOR and cross DGO VOR according to the MCA or ATC instructions.
MUTUB 2 SEKUB 2B SESVA 2 TAKNI 2	Climb via DGO R211 to D7.0 DGO, turn LEFT and proceed on D10.0 Arc DGO to intercept the corresponding radial from DGO VOR to MUTUB, SEKUB, SESVA, or TAKNI and continue on the assigned route or ATC instructions.
UKIKI 2	Climb via DGO R211 to D10.0 DGO, turn RIGHT and proceed on heading 257° to intercept DGO R232 to UKIKI and continue on the assigned route or ATC instructions.



MMDO/ DGO

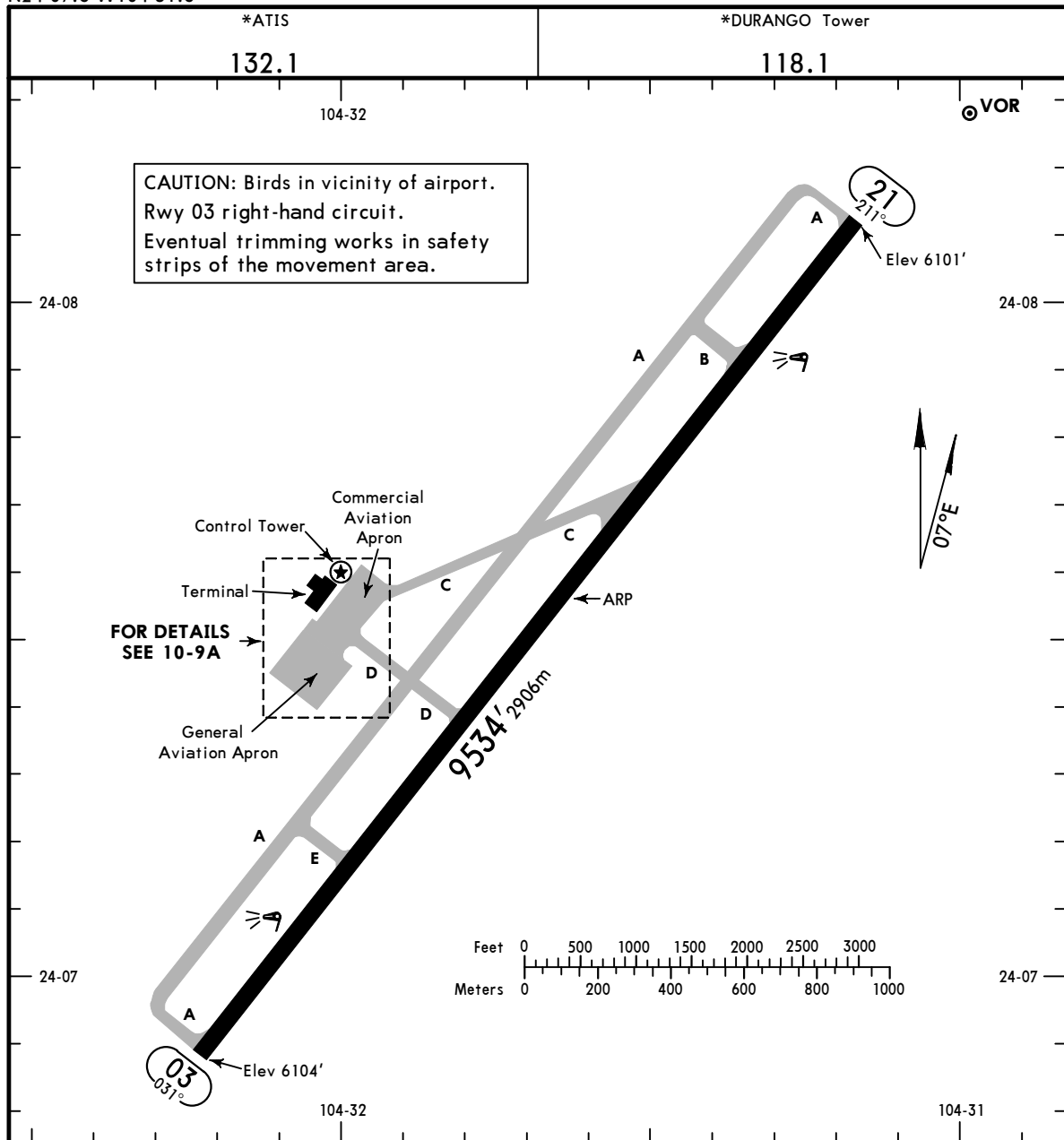
Apt Elev **6104'**
N24 07.6 W104 31.6

JEPPESEN

27 SEP 24 **(10-9)** Eff 3 Oct

DURANGO, MEXICO

DURANGO INTL



ADDITIONAL RUNWAY INFORMATION						
RWY				USABLE LENGTHS		WIDTH
				Threshold	Glide Slope	
03						148'
21	HIRL	REIL	PAPI-L (angle 3.0°)			45m

State TAKE-OFF						
1 HIRL & CL (spacing 15m or less) & relevant RVR	RL & CL & relevant RVR	RL & CL	2 RL & RCLM	2 RL or RCLM	Adequate Vis Ref	
					DAY	NIGHT
TDZ/Mid/Rollout R4 R125m	TDZ/Mid/Rollout R5 R150m	R6 R/V200m	R10 R/V300m	R12 R/V400m	R16 R/V500m	NA

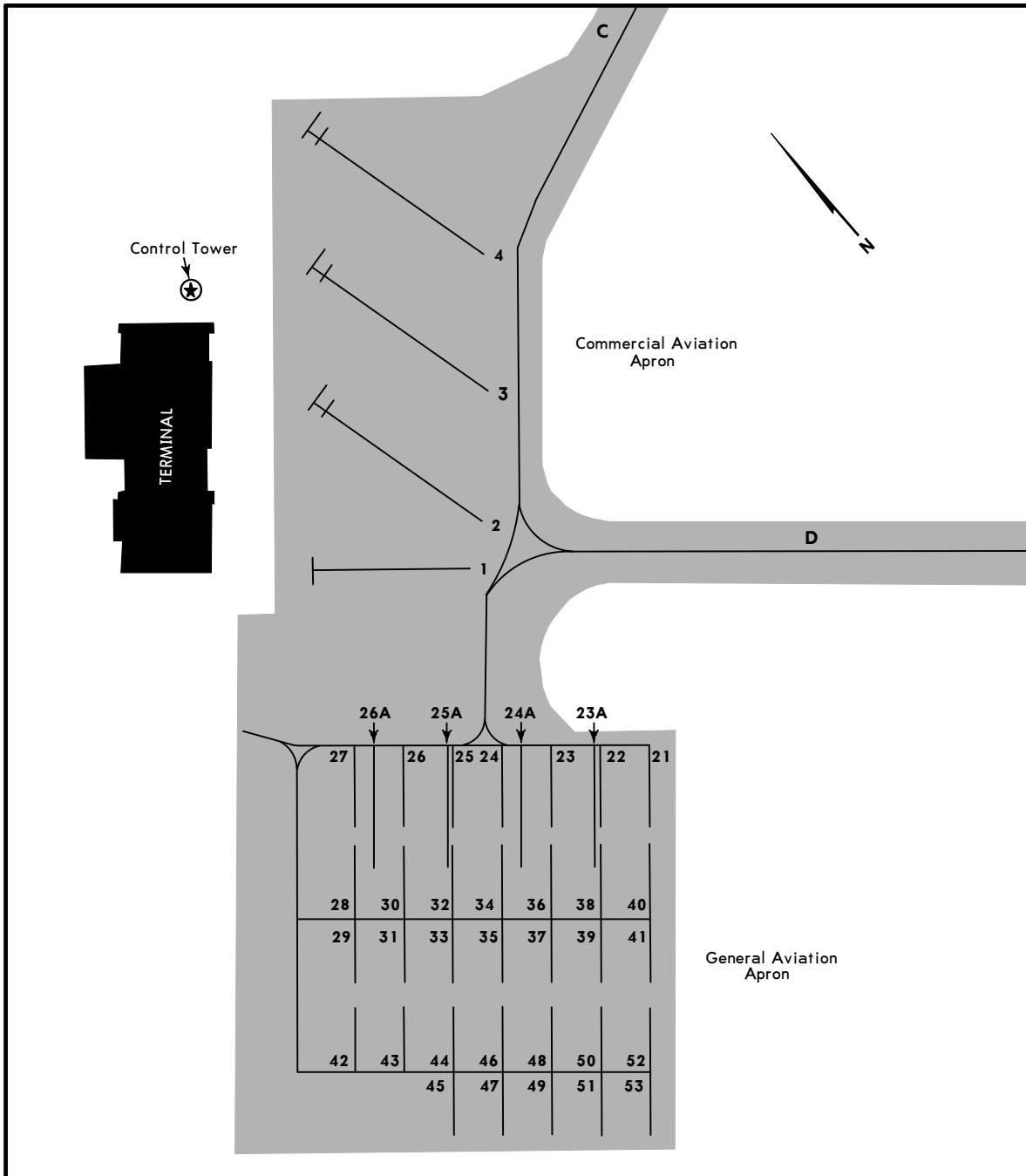
- 1 TDZ/Mid/Rollout R3 or R75m with approved lateral guidance system.
- 2 For NIGHT operations, at least RL or CL and RENL are required.

The TDZ RVR/VIS may be assessed by the pilot.
Adequate visual reference means that a pilot is able to continuously indentify the take-off surface and maintain directional control.
Take-off minimums which are relevant to the take-off manoeuvre itself, should not be confused with weather minimums required for flight initiation. Departure weather minimums at an aerodrome should not be less than the applicable minimums for landing at that aerodrome unless a suitable take-off alternate aerodrome is available. The take-off alternate aerodrome should have weather conditions and facilities suitable for landing the aeroplane in normal and non-normal configurations pertinent to the operation.

MMDO/DGO

JEPPESEN
27 SEP 24 10-9A Eff 3 Oct

DURANGO, MEXICO
DURANGO INTL



PARKING SPOT COORDINATES

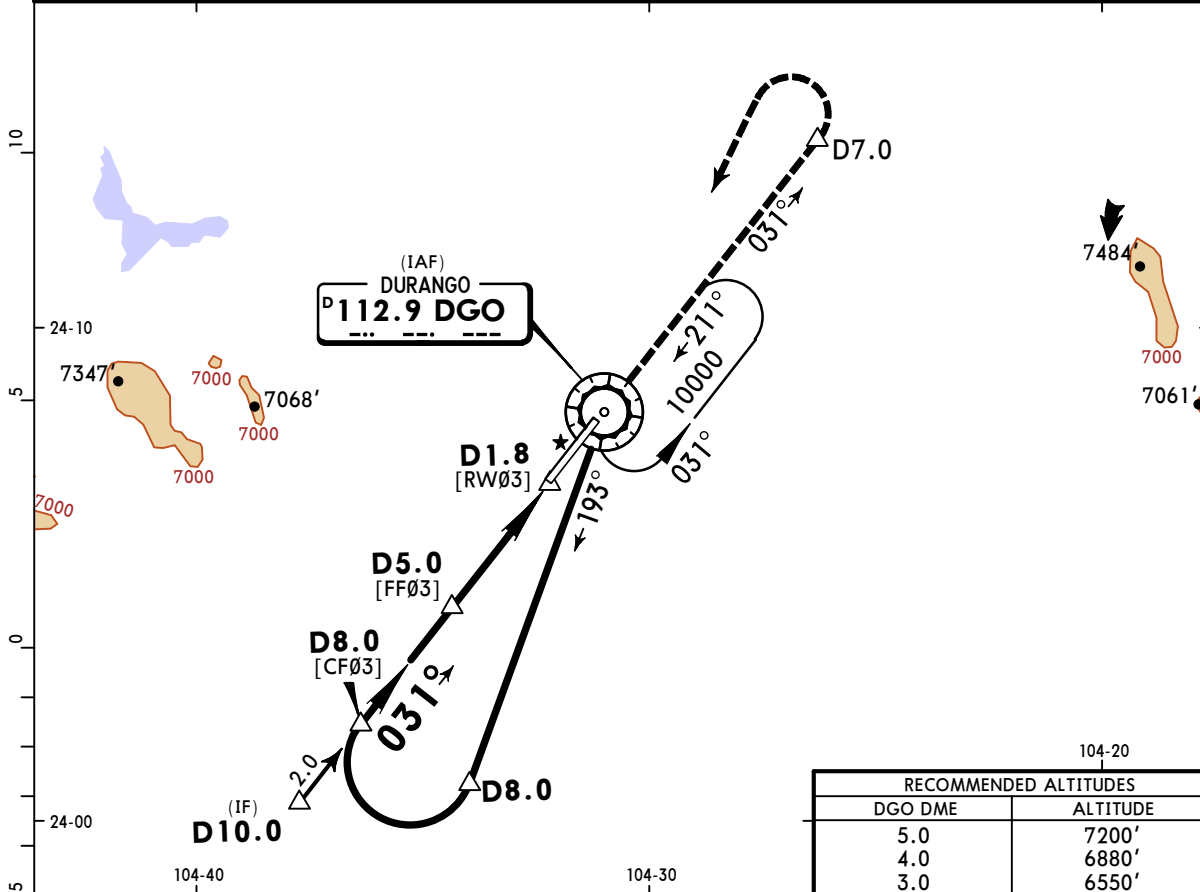
SPOT No.	COORDINATES	SPOT No.	COORDINATES
Commercial Aviation Apron		General Aviation Apron	
1	N24 07.5 W104 32.0	21, 23A	N24 07.4 W104 32.0
2 thru 4	N24 07.6 W104 32.0	22, 23 24 thru 26	N24 07.5 W104 32.0
		26A, 27, 28 29, 31	N24 07.5 W104 32.1
		30, 32, 34, 36	N24 07.5 W104 32.0
		33	N24 07.4 W104 32.1
		35, 37 thru 41	N24 07.4 W104 32.0
		42	N24 07.5 W104 32.1
		43 thru 47, 49, 51	N24 07.4 W104 32.1
		48, 50, 52, 53	N24 07.4 W104 32.0

MMDO/DGO DURANGO INTL

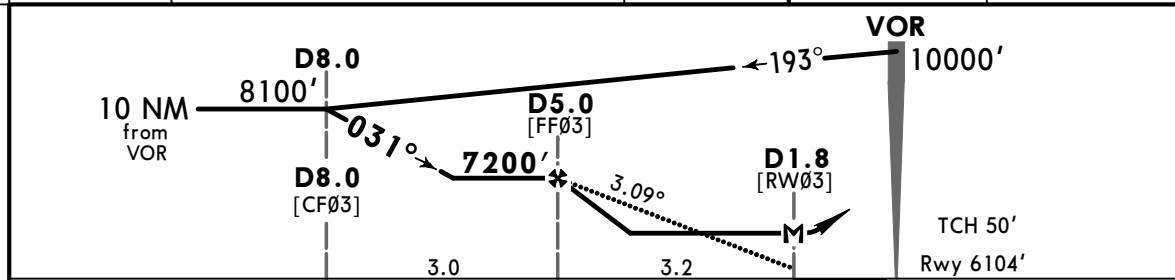
JEPPESSEN
27 SEP 24 **13-1** Eff 3 Oct

DURANGO, MEXICO VOR Z Rwy 03

*ATIS 132.1		*DURANGO Approach 118.1		*DURANGO Tower 118.1		
VOR DGO 112.9	Final Apch Crs 031°	D5.0 7200' (1096')	MDA(H) 6520' (416')	Apt Elev 6104' Rwy 6104'		
MISSED APCH: Climb on DGO VOR R-031 to D7.0, then turn LEFT within 10 NM to DGO VOR at the minimum holding altitude.						
Alt Set: IN (MB on req)		Trans level: FL 195		Trans alt: 18500'		
DME required.					MSA DGO VOR	



RECOMMENDED ALTITUDES	
DGO DME	ALTITUDE
5.0	7200'
4.0	6880'
3.0	6550'



Gnd speed-Kts	70	90	100	120	140	160	REIL PAPI-L	↑ on 112.9 R-031
Descent Angle 3.09°	383	492	547	656	765	875		
MAP at D1.8 or D5.0 to MAP	3.2	2:45	2:08	1:55	1:36	1:22		

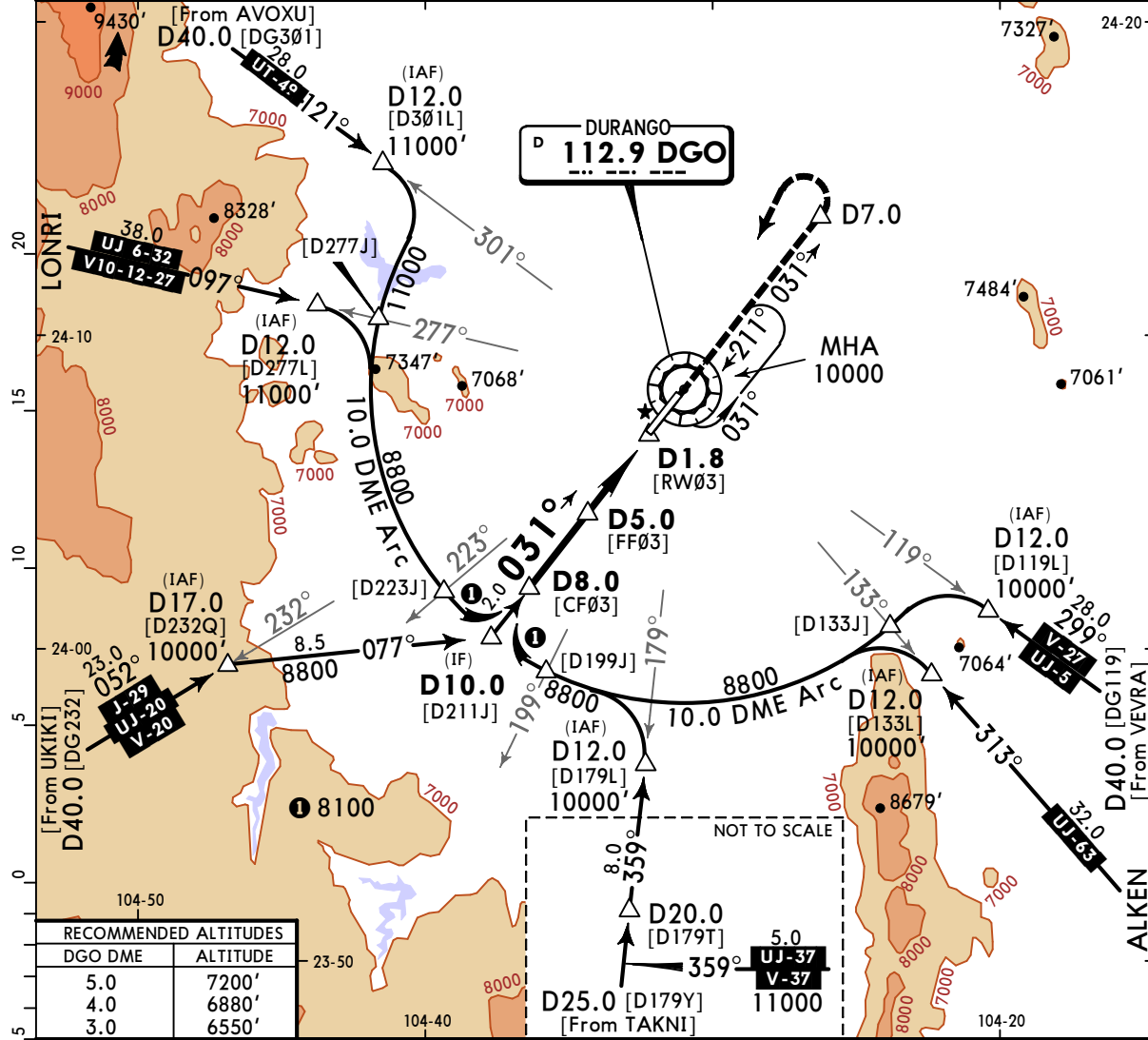
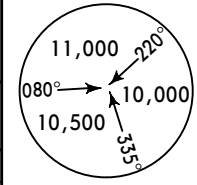
STRAIGHT-IN LANDING RWY 03			CIRCLE-TO-LAND		
MDA(H) 6520' (416')			MDA(H) _____		
A	1	Max Kts	90	6580' (476') - 1	
B			120	6880' (776') - 2 1/4	
C	1 1/4	140	7040' (936') - 3		
D		165			

MMDO/DGO DURANGO INTL

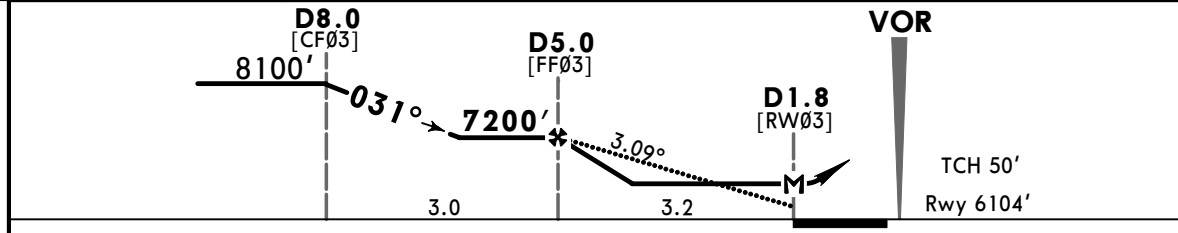
JEPPESSEN
27 SEP 24 **13-2** Eff 3 Oct

DURANGO, MEXICO VOR Y Rwy 03

*ATIS 132.1		*DURANGO Approach 118.1		*DURANGO Tower 118.1	
VOR DGO 112.9	Final Apch Crs 031°	D5.0 7200' (1096')	MDA(H) 6520' (416')	Apt Elev 6104' Rwy 6104'	
MISSED APCH: Climb on DGO VOR R-031 to D7.0, then turn LEFT within 10 NM to DGO VOR at the minimum holding altitude.					
Alt Set: IN (MB on req)		Trans level: FL 195		Trans alt: 18500'	
DME required.					



RECOMMENDED ALTITUDES	
DGO DME	ALTITUDE
5.0	7200'
4.0	6880'
3.0	6550'



Gnd speed-Kts	70	90	100	120	140	160	REIL PAPI-L	DGO on 112.9 R-031
Descent Angle 3.09°	383	492	547	656	765	875		
MAP at D1.8 or D5.0 to MAP	3.2	2:45	2:08	1:55	1:36	1:22		

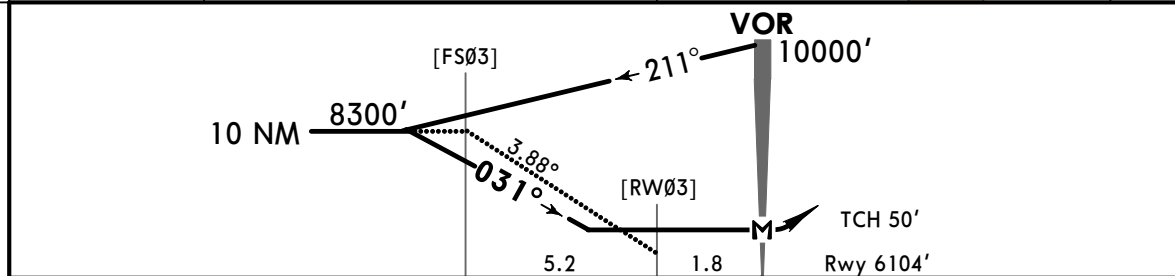
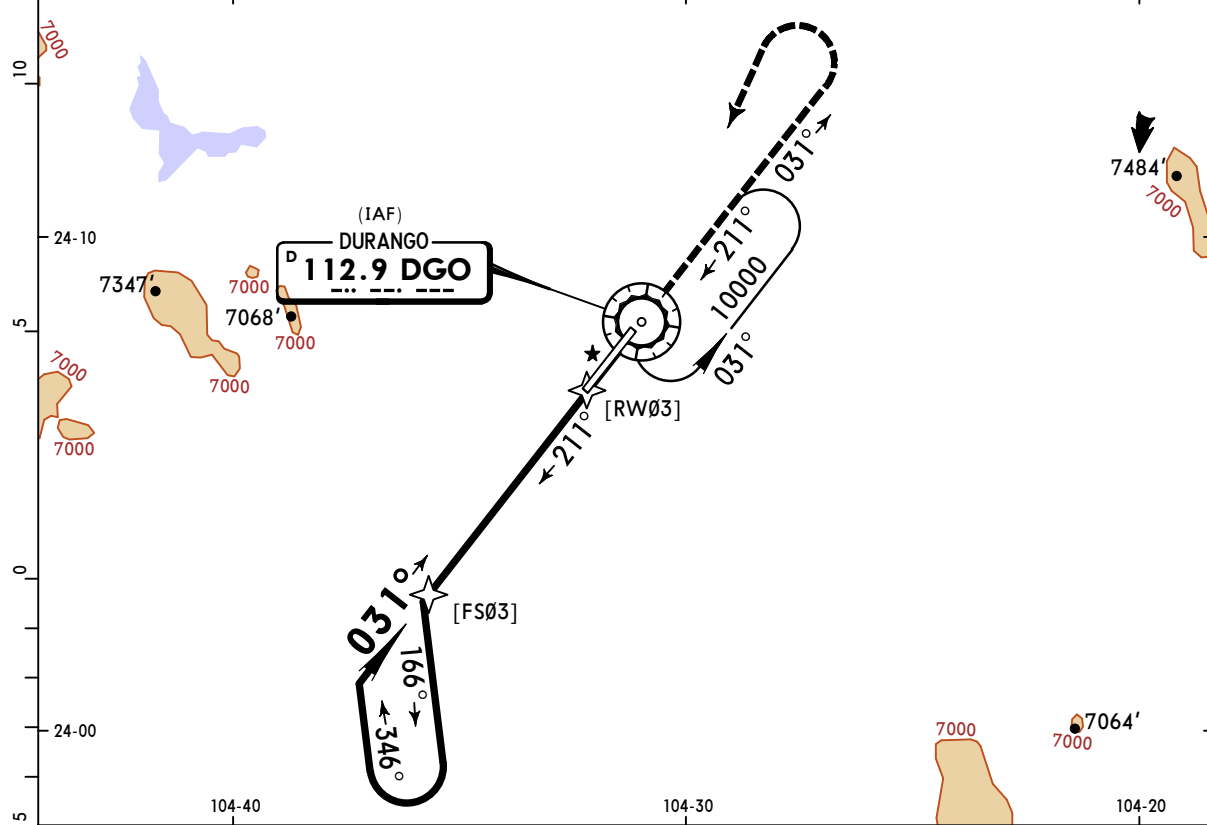
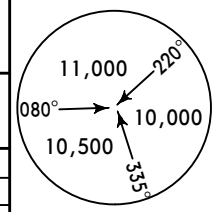
STRAIGHT-IN LANDING RWY 03		CIRCLE-TO-LAND	
MDA(H) 6520' (416')		Max Kts	MDA(H)
A	1	90	6580' (476') - 1
B	1	120	6880' (776') - 2 1/4
C	1 1/4	140	7040' (936') - 3
D	1 1/4	165	7040' (936') - 3

MMDO/DGO
DURANGO INTL

JEPPESSEN
27 SEP 24 **(13-3)** Eff 3 Oct

DURANGO, MEXICO
VOR X Rwy 03

*ATIS 132.1		*DURANGO Approach 118.1			*DURANGO Tower 118.1			
VOR DGO 112.9	Final Apch Crs 031°	No FAF	MDA(H) 6740' (636')	Apt Elev 6104' Rwy 6104'				
MISSED APCH: Climb on DGO VOR R-031, turn LEFT within 10 NM to DGO VOR at the minimum holding altitude.								
MISSED APCH: Max Distance Outbound Track 7 NM								
Gnd speed-Kts		80	100	120	140	160	180	200
Time		5:15	4:12	3:30	3:00	2:37	2:20	2:06
Alt Set: IN (MB on req)			Trans level: FL 195			Trans alt: 18500'		



Gnd speed-Kts	70	90	100	120	140	160	REIL PAPI-L	↑ on 112.9 R-031
Descent Angle 3.88°	481	618	687	824	962	1099		
MAP at VOR								

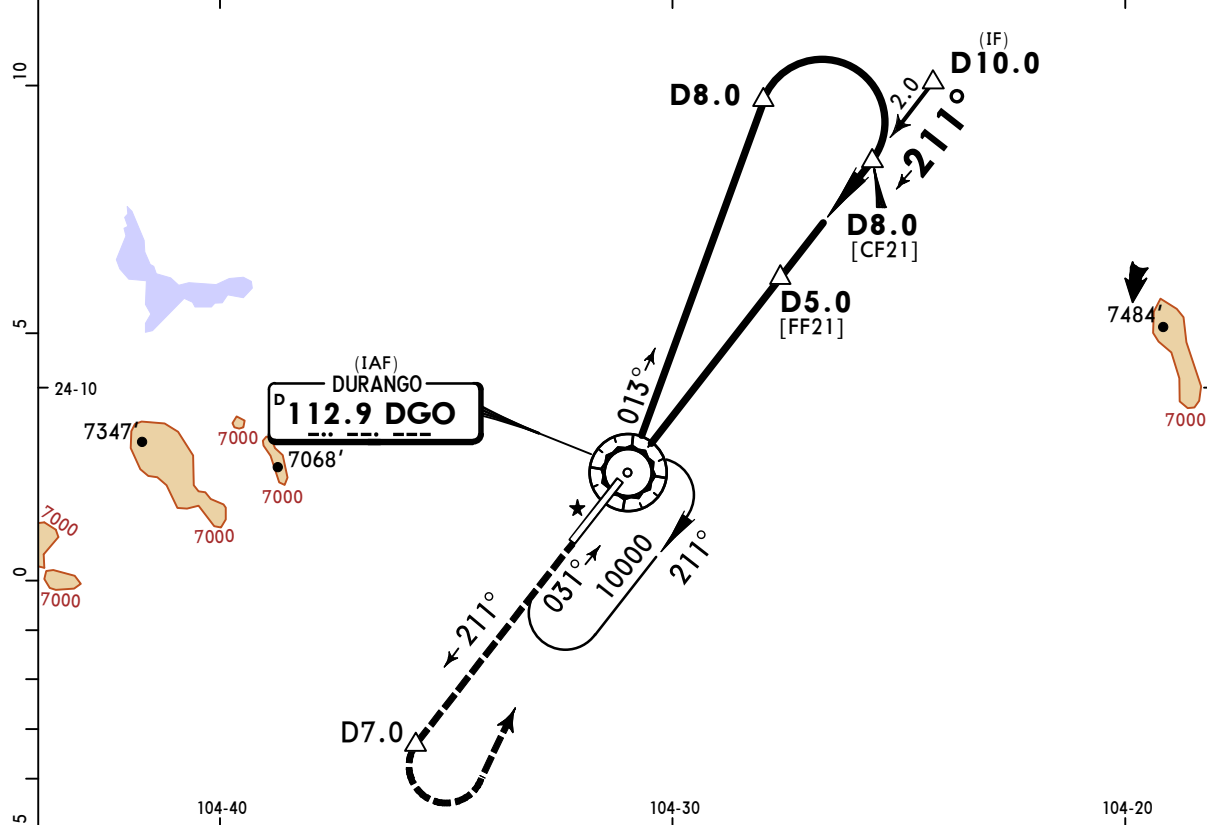
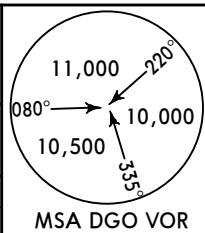
STRAIGHT-IN LANDING RWY 03			CIRCLE-TO-LAND		
MDA(H) 6740' (636')			MDA(H)		
A			Max Kts	90	6740' (636') -1
B	1		120		
C	1 3/4		140		6880' (776') -2 1/4
D	2		165		7040' (936') -3

MMDO/ DGO
DURANGO INTL

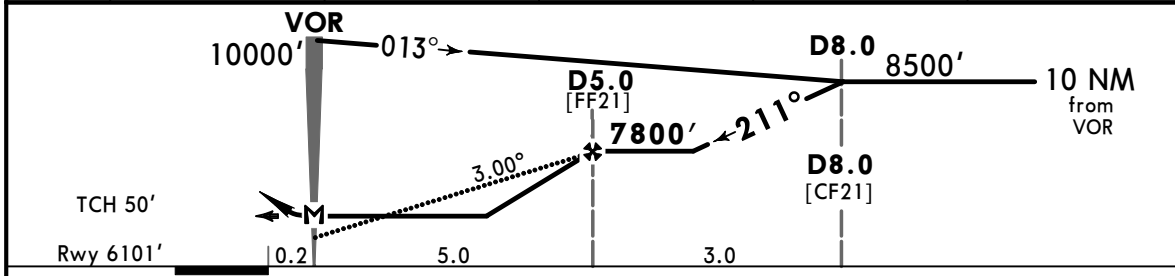
JEPPESEN
 27 SEP 24 **(13-4)** **Eff 3 Oct**

DURANGO, MEXICO
VOR Z Rwy 21

*ATIS 132.1		*DURANGO Approach 118.1		*DURANGO Tower 118.1	
VOR DGO 112.9	Final Apch Crs 211°	D5.0 7800' (1699')	MDA(H) 6520' (419')	Apt Elev 6104' Rwy 6101'	
MISSED APCH: Climb on DGO VOR R-211 to D7.0, then turn LEFT within 10 NM to DGO VOR at the minimum holding altitude.					
Alt Set: IN (MB on req)		Trans level: FL 195		Trans alt: 18500'	
DME required.				MSA DGO VOR	



DGO DME	1.0	2.0	3.0	4.0	5.0
ALTITUDE	6540'	6890'	7170'	7490'	7800'



Gnd speed-Kts	70	90	100	120	140	160	REIL PAPI-L	↑ DGO on 112.9 R-211
Descent Angle 3.00°	372	478	531	637	743	849		
MAP at VOR or D5.0 to MAP	5.0	4:17	3:20	3:00	2:30	2:09		

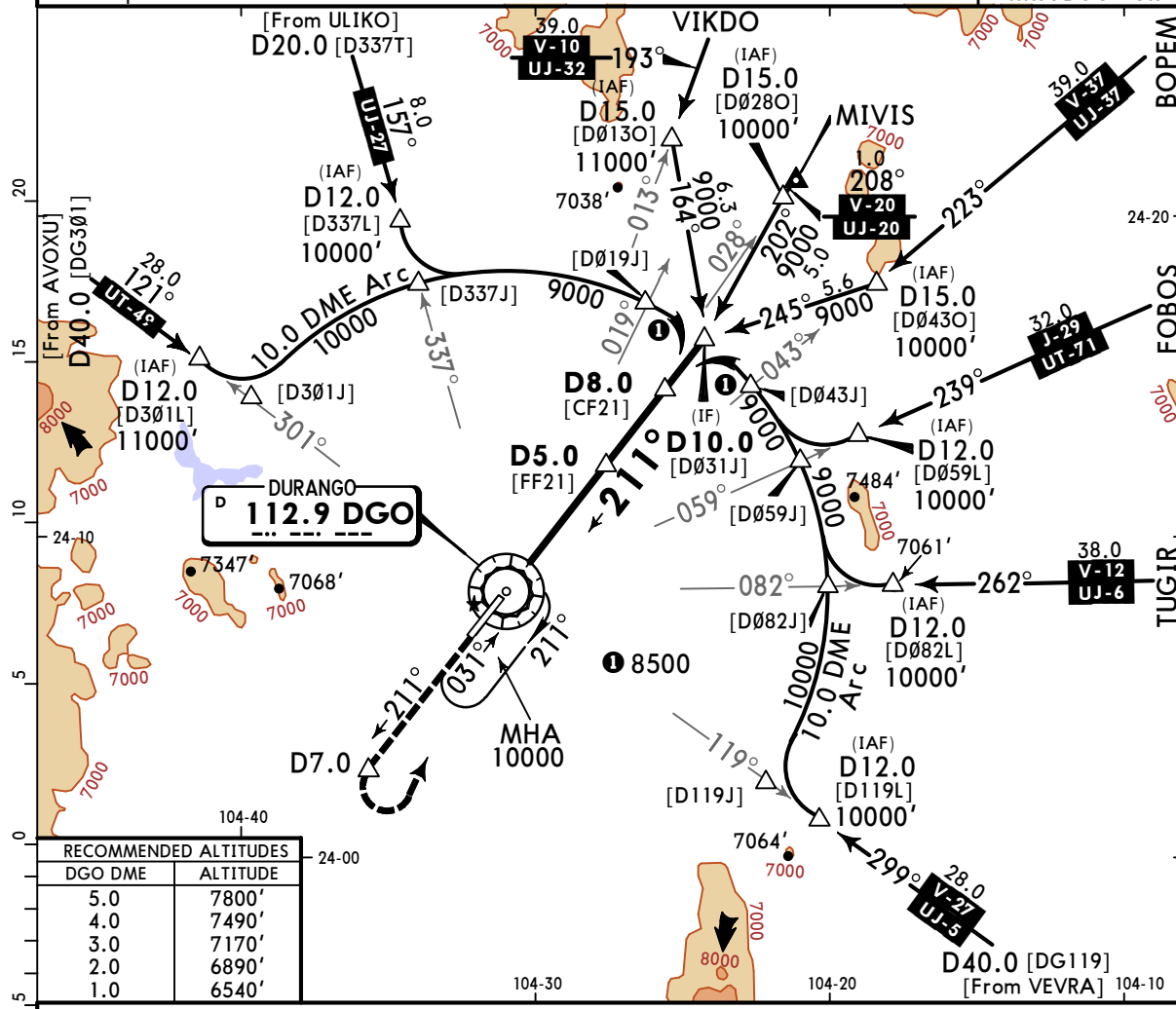
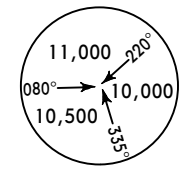
STRAIGHT-IN LANDING RWY 21			CIRCLE-TO-LAND		
MDA(H) 6520' (419')			MDA(H) _____		
A	1		Max Kts	_____	
B	1		90	6580' (476') -1	
C	1 1/4		120	_____	
D	1 1/4		140	6880' (776') -2 1/4	
			165	7040' (936') -3	

MMDO/DGO DURANGO INTL

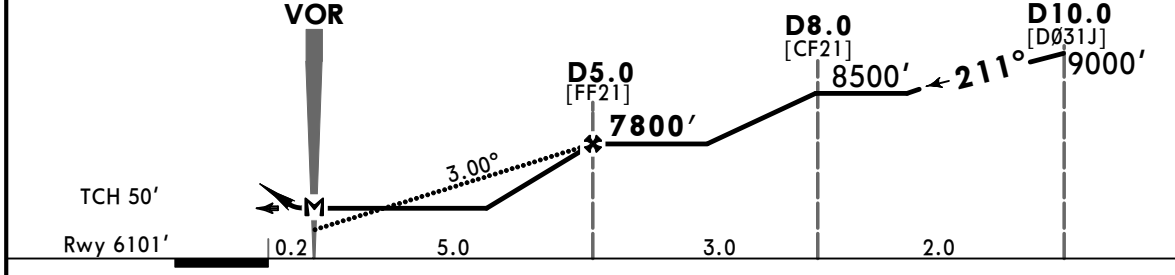
JEPPESSEN
27 SEP 24 **(13-5) Eff 3 Oct**

DURANGO, MEXICO VOR Y Rwy 21

*ATIS 132.1		*DURANGO Approach 118.1		*DURANGO Tower 118.1	
VOR DGO 112.9	Final Apch Crs 211°	D5.0 7800' (1699')	MDA(H) 6520' (419')	Apt Elev 6104' Rwy 6101'	
MISSED APCH: Climb on DGO VOR R-211 to D7.0, then turn LEFT within 10 NM to DGO VOR at the minimum holding altitude.					
Alt Set: IN (MB on req)		Trans level: FL 195		Trans alt: 18500'	
DME required.				MSA DGO VOR	



RECOMMENDED ALTITUDES	
DGO DME	ALTITUDE
5.0	7800'
4.0	7490'
3.0	7170'
2.0	6890'
1.0	6540'



Gnd speed-Kts	70	90	100	120	140	160	REIL PAPI-L	↑ on 112.9 R-211
Descent Angle 3.00°	372	478	531	637	743	849		
MAP at VOR or D5.0 to MAP	5.0	4:17	3:20	3:00	2:30	2:09		

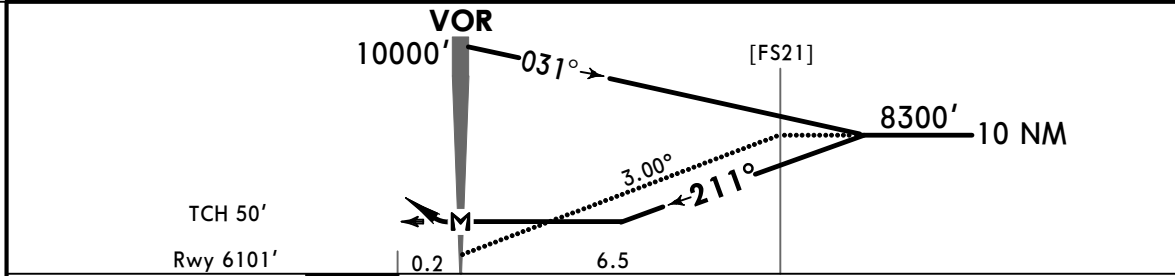
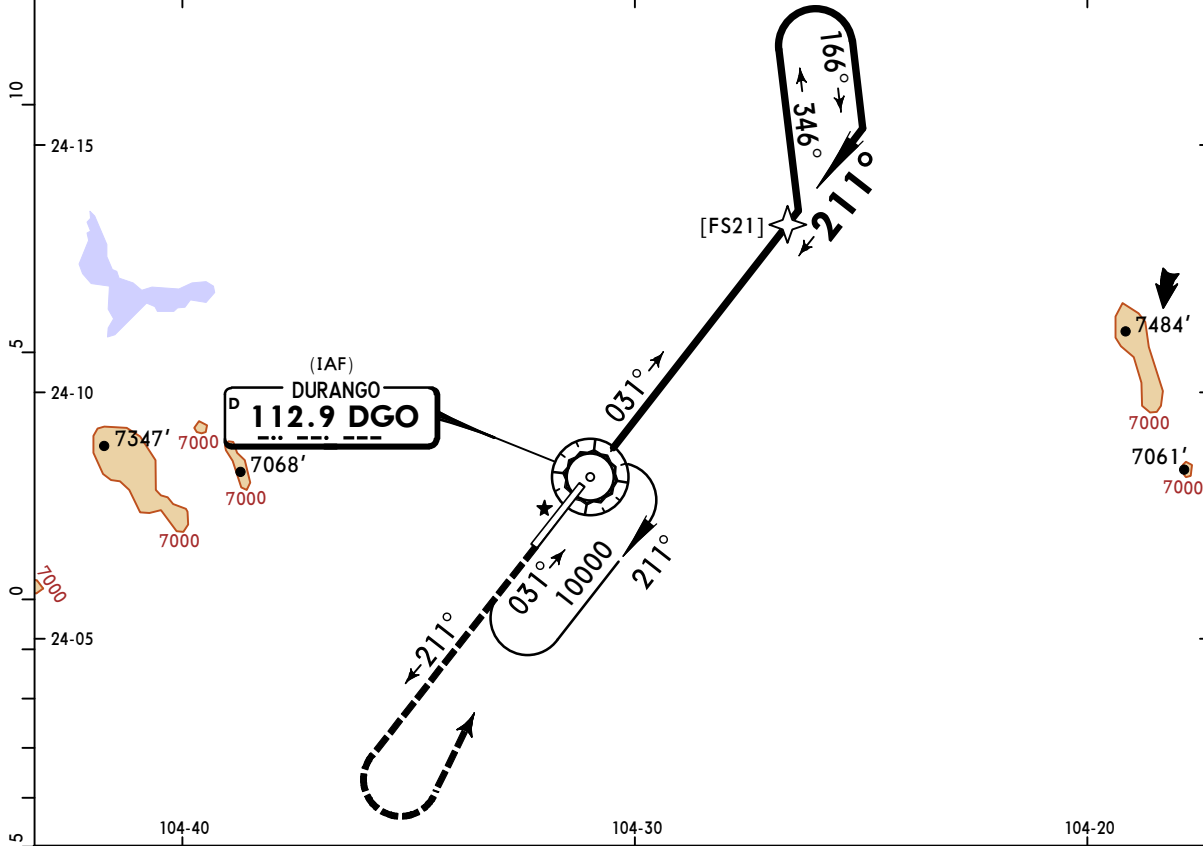
STRAIGHT-IN LANDING RWY 21		CIRCLE-TO-LAND	
MDA(H) 6520' (419')		MDA(H)	
A	1	90	6580' (476') - 1
B	1	120	6580' (476') - 1
C	1 1/4	140	6880' (776') - 2 1/4
D	1 1/4	165	7040' (936') - 3

MMDO/DGO
DURANGO INTL

JEPPESSEN
27 SEP 24 **(13-6)** Eff 3 Oct

DURANGO, MEXICO
VOR X Rwy 21

*ATIS 132.1		*DURANGO Approach 118.1			*DURANGO Tower 118.1	
VOR DGO 112.9	Final Apch Crs 211°	No FAF	MDA(H) 6720' (619')	Apt Elev 6104' Rwy 6101'		
MISSED APCH: Climb on DGO VOR R-211, then turn LEFT within 10 NM to DGO VOR at the minimum holding altitude.						
MISSED APCH: MAX Distance Outbound Track 7NM						
Alt Set: IN (MB on req)		Trans level: FL 195		Trans alt: 18500'		MSA DGO VOR



Gnd speed-Kts	70	90	100	120	140	160	REIL PAPI-L	↑ on 112.9 R-211
Descent Angle 3.00°	372	478	531	637	743	849		
MAP at VOR								

STRAIGHT-IN LANDING RWY 21			CIRCLE-TO-LAND		
MDA(H) 6720' (619')			MDA(H)		
A	1		Max Kts	_____	
B	1		90	6720' (616') -1	
C	1¾		120	6880' (776') -2¼	
D	2		140	7040' (936') -3	
			165		