

## General Information

Location: BAHIAS DE HUATULCO MEX  
ICAO/IATA: MMBT / HUX  
Lat/Long: N15° 46.5', W096° 15.8'  
Elevation: 464 ft

Airport Use: Public  
Daylight Savings: Not Observed  
UTC Conversion: +6:00 = UTC  
Magnetic Variation: 3.0° E

Fuel Types: 100 Octane (LL), Jet A  
Customs: Yes  
Airport Type: IFR  
Landing Fee: No  
Control Tower: Yes  
Jet Start Unit: No  
LLWS Alert: No  
Beacon: No

Sunrise: 1220 Z  
Sunset: 2359 Z

## Runway Information

Runway: 07  
Length x Width: 9843 ft x 148 ft  
Surface Type: asphalt  
TDZ-Elev: 464 ft  
Lighting: Edge, REIL

Runway: 25  
Length x Width: 9843 ft x 148 ft  
Surface Type: asphalt  
TDZ-Elev: 427 ft  
Lighting: Edge, REIL

## Communication Information

Huatulco Tower: 118.000  
Mexico Control Approach: 123.500 RCO

# BAHIAS DE HUATULCO, MEXICO

MMBT/HUX

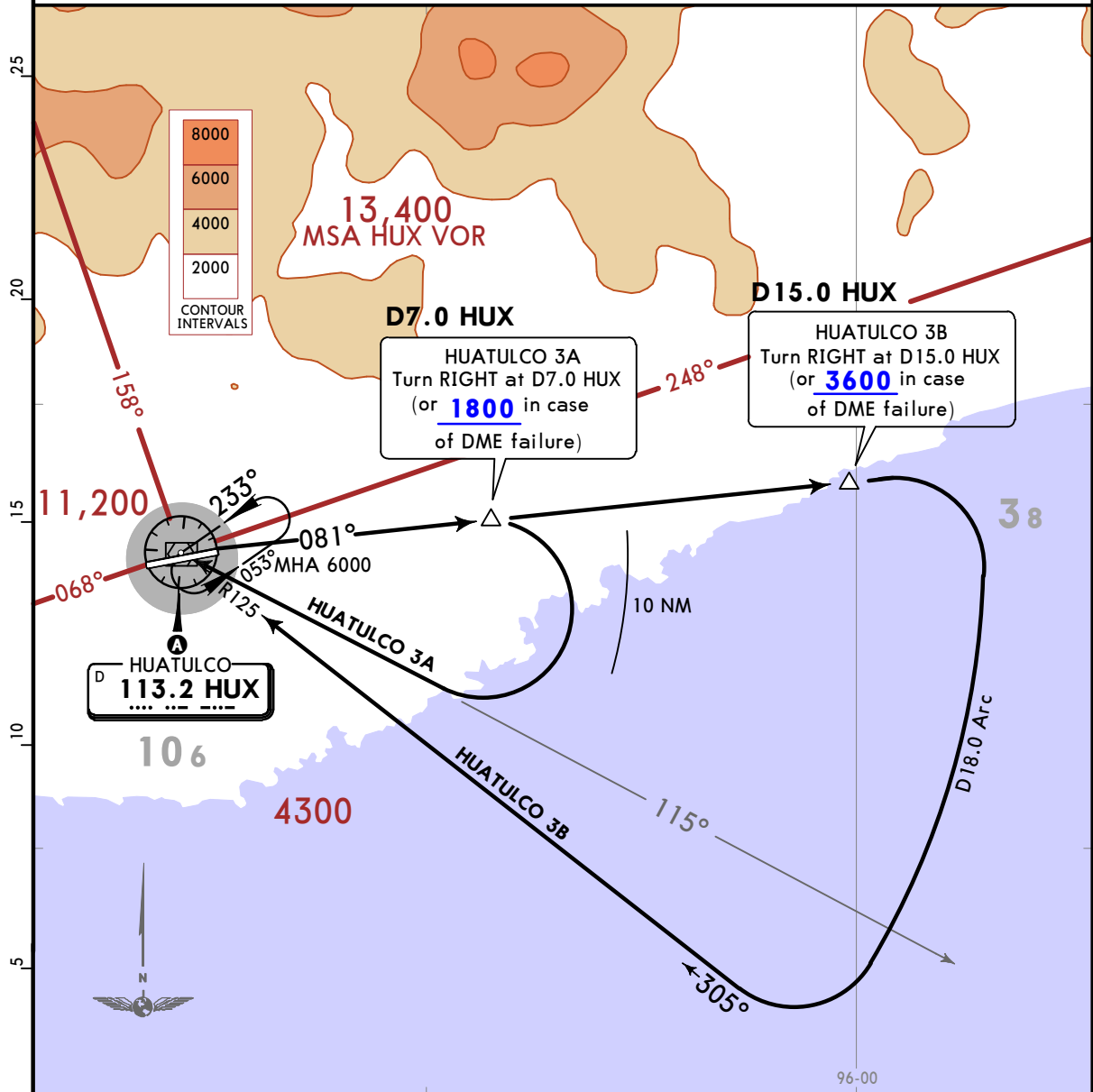
**JEPPESEN**  
1 OCT 21 10-3 Eff 7 Oct

BAHIAS DE HUATULCO INTL

**SID**

Apt Elev <b>464</b>	Trans alt: 18500
------------------------	------------------

## HUATULCO 3A (HUX3A), HUATULCO 3B (HUX3B) DEPARTURES (RWY 07)



These SIDs require a minimum climb gradient:  
 HUATULCO 3A: 220 per NM (3.62%) until crossing 5000.  
 HUATULCO 3B: 220 per NM (3.62%) until crossing 10000.

Gnd speed-KT	75	100	150	200	250	300
220 per NM	275	367	550	733	917	1100

A MINIMUM CROSSING ALTITUDE			
IZT	V-1	UJ-9	7000
TAP		J-1	5400
ICARO		UL-308	3900
PXM	V-1	J-1, UJ-9	5400
OAX	V-27	UL-308, UJ-33, UT-158	10200
OAX	V-27E	UJ-39	12000
VER		UJ-70	12000

SID	INITIAL CLIMB
<b>HUATULCO 3A</b>	Climb via HUX R081 to D7.0 HUX (or 1800 in case of DME failure), then turn RIGHT within 10 NM to HUX VOR and cross it according to the <b>A</b> MCA of the assigned route or ATC instructions.
<b>HUATULCO 3B</b>	Climb via HUX R081 to D15.0 HUX (or 3600 in case of DME failure), then turn RIGHT and continue via the D18.0 Arc HUX to intercept the HUX R125 inbound to HUX VOR and cross it according to the <b>A</b> MCA of the assigned route or ATC instructions.

CHANGES: Procedures unnumbered, bearings, MCA table.

# BAHIAS DE HUATULCO, MEXICO

MMBT/HUX



BAHIAS DE HUATULCO INTL 1 OCT 21

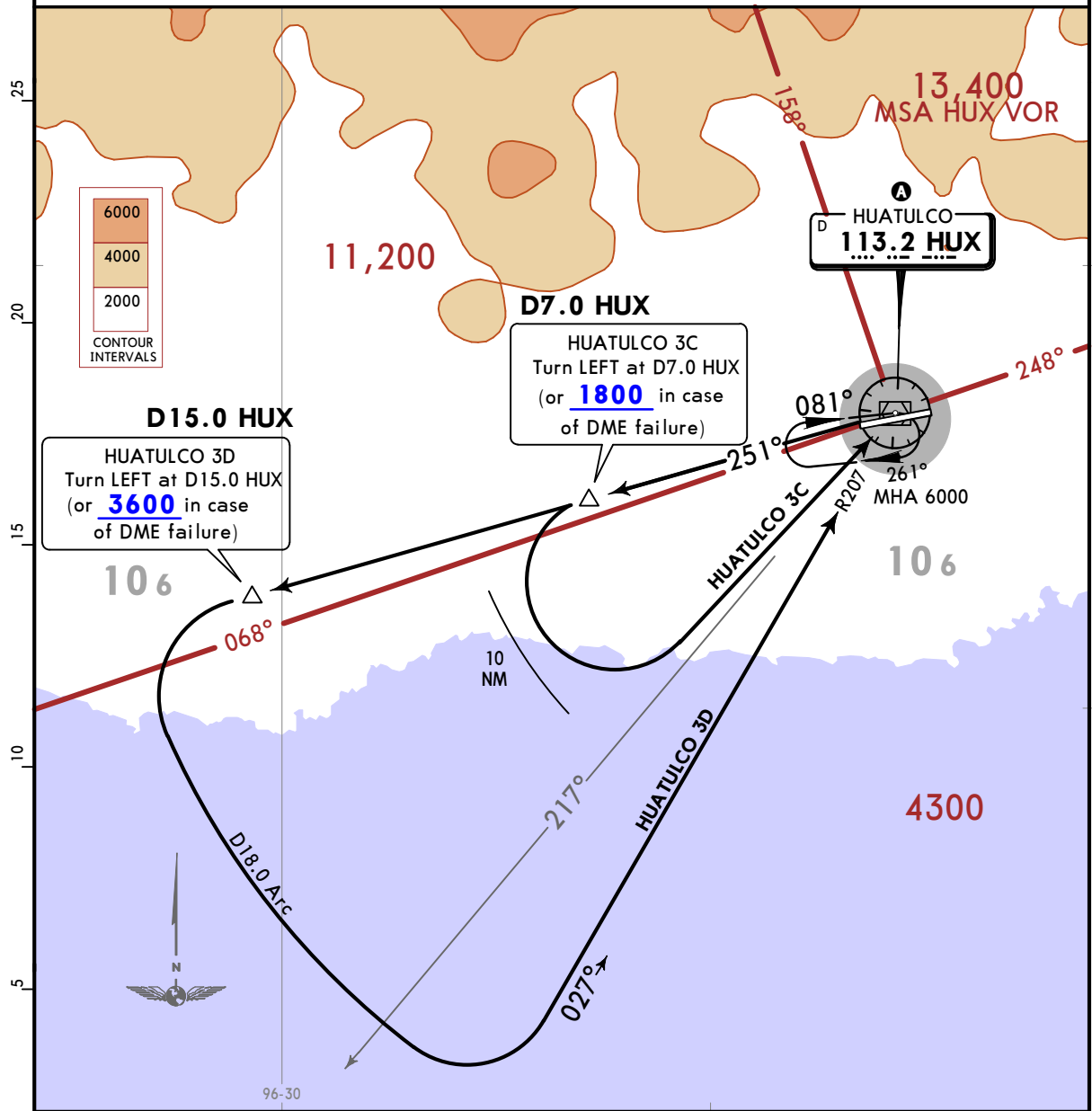
10-3A

Eff 7 Oct

SID

Apt Elev 464 Trans alt: 18500

## HUATULCO 3C (HUX3C), HUATULCO 3D (HUX3D) DEPARTURES (RWY 25)



These SIDs require a minimum climb gradient:  
 HUATULCO 3C: 220 per NM (3.62%) until crossing 5000.  
 HUATULCO 3D: 220 per NM (3.62%) until crossing 10000.

Gnd speed-KT	75	100	150	200	250	300
220 per NM	275	367	550	733	917	1100

A MINIMUM CROSSING ALTITUDE			
IZT	V-1	UJ-9	7000
TAP		J-1	5400
ICARO		UL-308	3900
PXM	V-1	J-1, UJ-9	5400
OAX	V-27	UL-308, UJ-33, UT-158	10200
OAX	V-27E	UJ-39	12000
VER		UJ-70	12000

SID	INITIAL CLIMB
HUATULCO 3C	Climb via HUX R251 to D7.0 HUX (or 1800 in case of DME failure), then turn LEFT within 10 NM to HUX VOR and cross it according to the A MCA of the assigned route or ATC instructions.
HUATULCO 3D	Climb via HUX R251 to D15.0 HUX (or 3600 in case of DME failure), then turn LEFT and continue via the D18.0 Arc HUX to intercept HUX R207 to HUX VOR and cross it according to the A MCA of the assigned route or ATC instructions.

CHANGES: Procedures unnumbered, bearings, MCA table.

© JEPPESEN, 2019, 2021. ALL RIGHTS RESERVED.

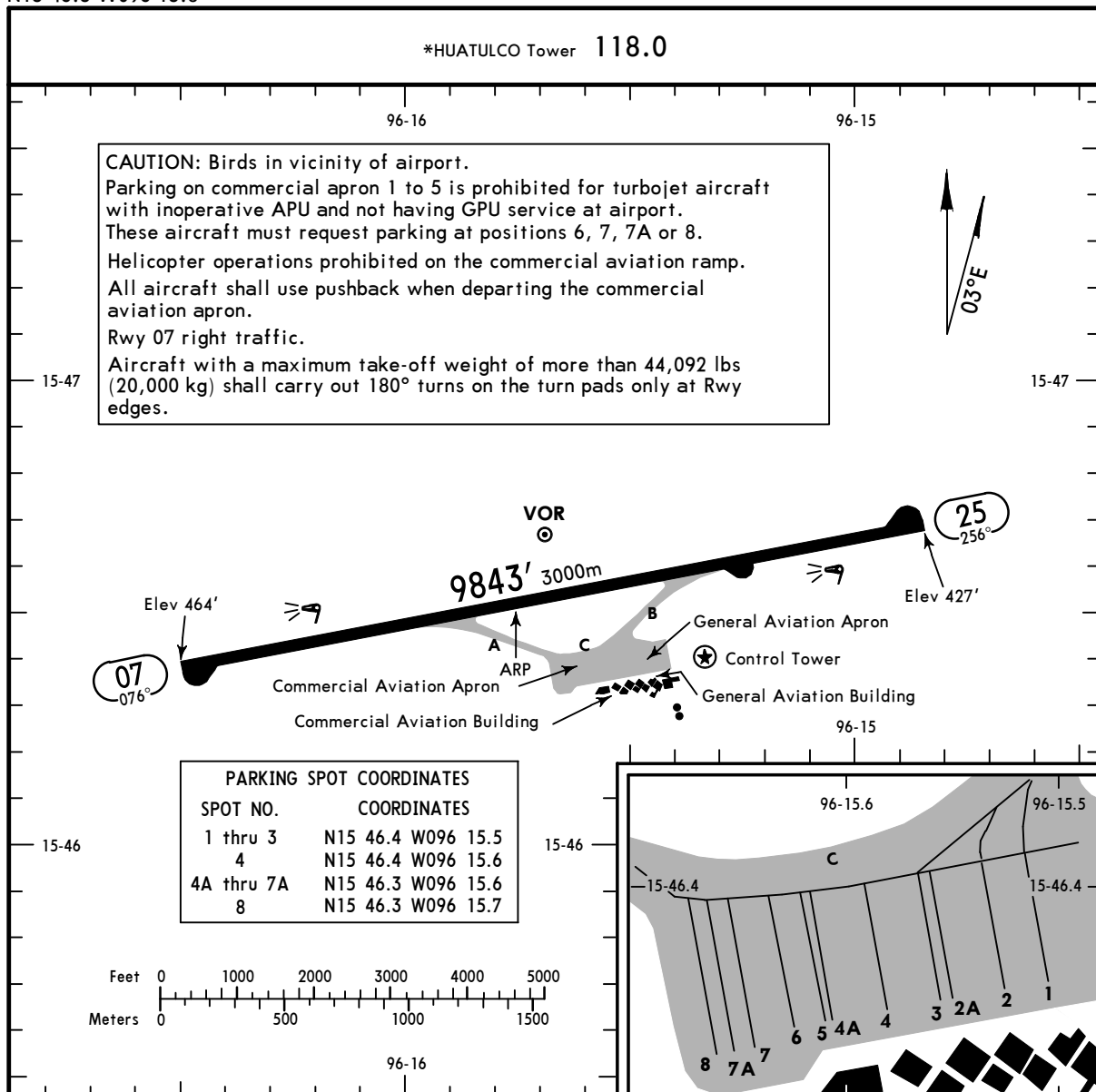
# MMBT/HUX

Apt Elev **464'**  
N15 46.5 W096 15.8

# JEPPESEN BAHIAS DE HUATULCO, MEXICO

2 AUG 24 **10-9** Eff 8 Aug

BAHIAS DE HUATULCO INTL



RWY		ADDITIONAL RUNWAY INFORMATION				USABLE LENGTHS		TAKE-OFF	WIDTH
		LANDING BEYOND		Threshold	Glide Slope				
07	25	HIRL REIL PAPI-L (angle 3.0°)							

State		TAKE-OFF					Adequate Vis Ref	
1 HIRL & CL (spacing 15m or less) & relevant RVR	RL & CL & relevant RVR	RL & CL	2 RL & RCLM	2 RL or RCLM	Adequate Vis Ref			
TDZ/Mid/Rollout	TDZ/Mid/Rollout	R6	R10	R12	R16	DAY	NIGHT	
R4 R125m	R5 R150m	R/V200m	R/V300m	R/V400m	R/V500m	NA		

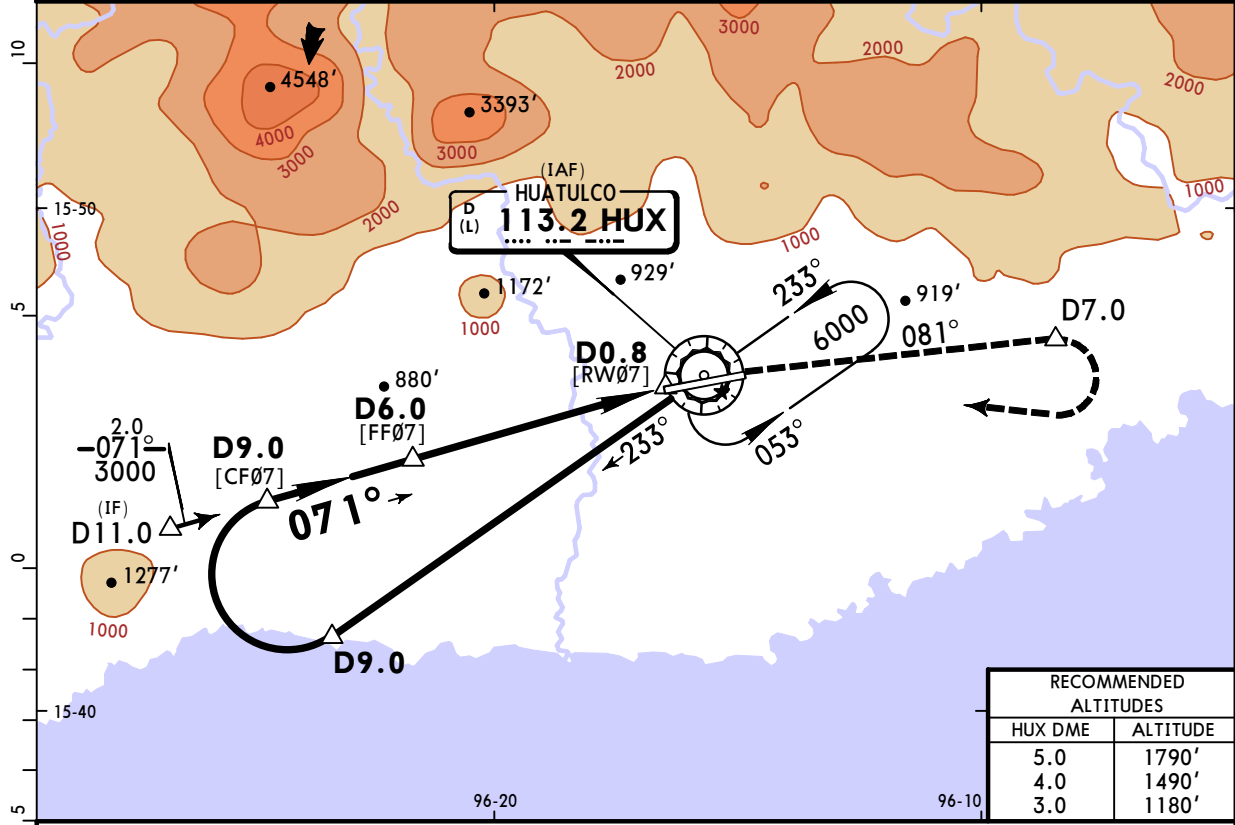
**1** TDZ/Mid/Rollout R3 or R75m with approved lateral guidance system.  
**2** For NIGHT operations, at least RL or CL and RENL are required.

The TDZ RVR/VIS may be assessed by the pilot.  
 Adequate visual reference means that a pilot is able to continuously indentify the take-off surface and maintain directional control.  
 Take-off minimums which are relevant to the take-off manoeuvre itself, should not be confused with weather minimums required for flight initiation. Departure weather minimums at an aerodrome should not be less than the applicable minimums for landing at that aerodrome unless a suitable take-off alternate aerodrome is available. The take-off alternate aerodrome should have weather conditions and facilities suitable for landing the aeroplane in normal and non-normal configurations pertinent to the operation.

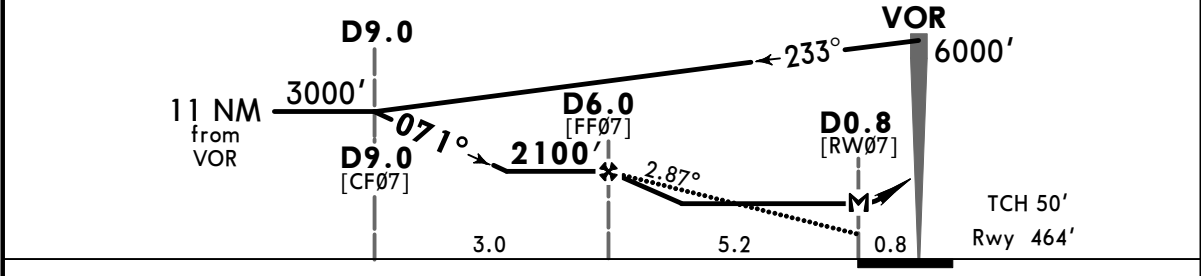
# MMBT/HUX

## BAHIAS DE HUATULCO INTL 13-1 2 AUG 24 Eff 8 Aug VOR Z Rwy 07

*MEXICO Center (R)			*HUATULCO Tower		
123.5			118.0		
VOR HUX <b>113.2</b>	Final Apch Crs <b>071°</b>	<b>D6.0</b> 2100' (1636')	MDA(H) <b>1180'</b> (716')	Apt Elev 464' Rwy 464'	<p>MSA HUX VOR</p>
<p><b>MISSED APCH:</b> Climb outbound via HUX VOR R-081 to D7.0, then turn RIGHT within 10 NM, to HUX VOR at the minimum holding altitude.</p>					
Alt Set: IN (MB on req)		Trans level: FL 195		Trans alt: 18500'	
1. DME required. 2. CAUTION: Do not use radio altimeter as a reference to determine altitude over airport due to orographic conditions.					



RECOMMENDED ALTITUDES	
HUX DME	ALTITUDE
5.0	1790'
4.0	1490'
3.0	1180'



Grnd speed-Kts	70	90	100	120	140	160
Descent Angle	2.87°	355	457	508	609	812
MAP at D0.8						
FAF to MAP	5.2	4:27	3:28	3:07	2:36	2:14

REIL PAPI-L

↑ via **HUX 113.2 R-081** **D7.0**

STRAIGHT-IN LANDING RWY 07		CIRCLE-TO-LAND	
MDA(H) <b>1180'</b> (716')		Not Authorized North of Rwy 07-25	
A		Max Kts	MDA(H)
B	1	90	1220' (756') - 1
C	2	120	1220' (756') - 1¼
D	2¼	140	1220' (756') - 2¼
		165	1220' (756') - 2½

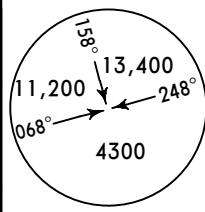
CHANGES: Procedure title, alt set unit, note added.

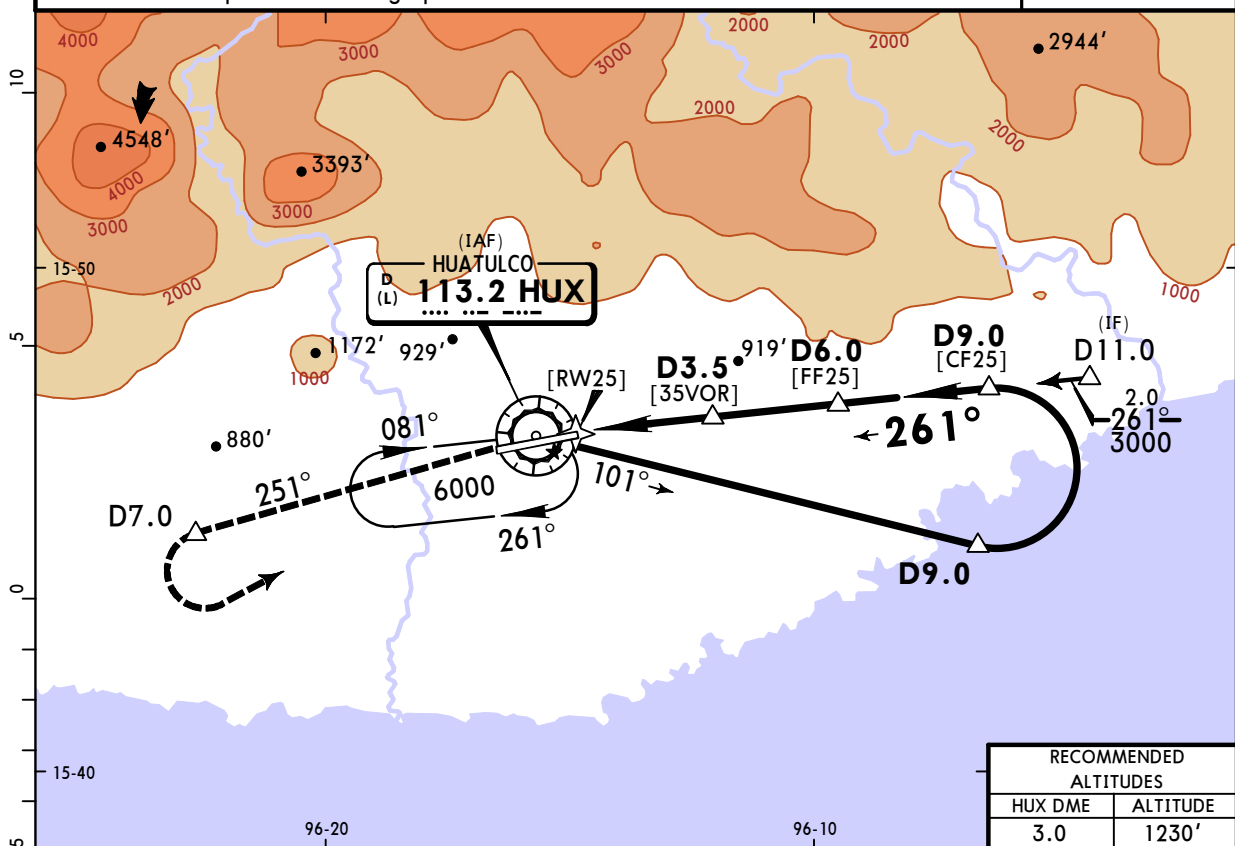


# MMBT/HUX

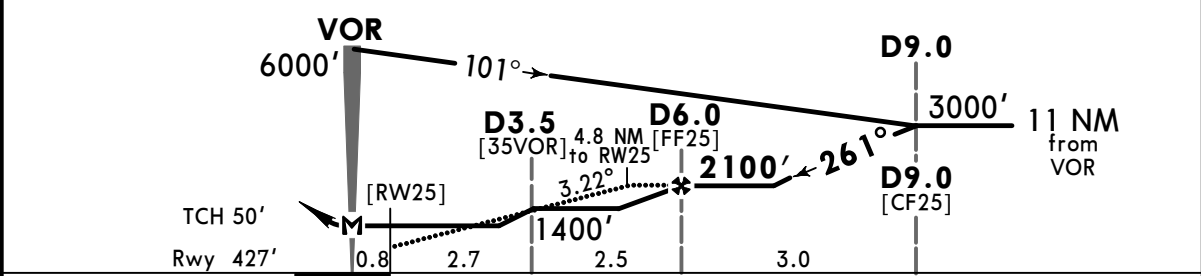
## BAHIAS DE HUATULCO INTL (13-3) 2 AUG 24 Eff 8 Aug JEPPESEN BAHIAS DE HUATULCO, MEXICO

### VOR Z Rwy 25

*MEXICO Center (R) <b>123.5</b>	*HUATULCO Tower <b>118.0</b>				
VOR HUX <b>113.2</b>	Final Apch Crs <b>261°</b>	D6.0 <b>2100' (1673')</b>	MDA(H) <b>1040' (613')</b>	Apt Elev 464' Rwy 427'	 <p>MSA HUX VOR</p>
<b>MISSED APCH:</b> Climb outbound via HUX VOR R-251 to D7.0, then turn LEFT within 10 NM, to HUX VOR at the minimum holding altitude.					
Alt Set: IN (MB on req)		Trans level: FL 195		Trans alt: 18500'	
1. DME required. 2. CAUTION: Do not use radio altimeter as a reference to determine altitude over airport due to orographic conditions.					



RECOMMENDED ALTITUDES	
HUX DME	ALTITUDE
3.0	1230'



Gnd speed-Kts	70	90	100	120	140	160
Descent Angle	3.22°	399	513	570	684	798
MAP at VOR						
FAF to MAP	6.0	5:09	4:00	3:36	3:00	2:34

REIL PAPI-L	↑	HUX via <b>113.2</b> <b>R-251</b>	<b>D7.0</b>
----------------	---	---	-------------

STRAIGHT-IN LANDING RWY 25		CIRCLE-TO-LAND	
MDA(H) <b>1040' (613')</b>		Not Authorized North of Rwy 07-25	
A	1	Max Kts	MDA(H)
B	1	90	1220' (756') - 1
C	1 3/4	120	1220' (756') - 1 1/4
D	2	140	1220' (756') - 2 1/4
		165	1220' (756') - 2 1/2

CHANGES: Procedure title, alt set unit, note added.

