

General Information

Location: CHETUMAL MEX
ICAO/IATA: MMCM / CTM
Lat/Long: N18° 30.3', W088° 19.7'
Elevation: 41 ft

Airport Use: Public
Daylight Savings: Observed
UTC Conversion: +6:00 = UTC
Magnetic Variation: 1.0° W

Fuel Types: 100-130 Octane, Jet A-1
Customs: Yes
Airport Type: IFR
Landing Fee: No
Control Tower: Yes
Jet Start Unit: No
LLWS Alert: No
Beacon: Yes

Sunrise: 1116 Z
Sunset: 0027 Z

Runway Information

Runway: 10
Length x Width: 8839 ft x 148 ft
Surface Type: concrete
TDZ-Elev: 41 ft
Lighting: Edge
Displaced Threshold: 1615 ft

Runway: 28
Length x Width: 8839 ft x 148 ft
Surface Type: concrete
TDZ-Elev: 28 ft
Lighting: Edge
Displaced Threshold: 866 ft

Communication Information

Chetumal Tower: 118.800

MMCM/CTM
CHETUMAL INTL

JEPPESSEN
 15 MAY 20 **10-3** **Eff 21 May**

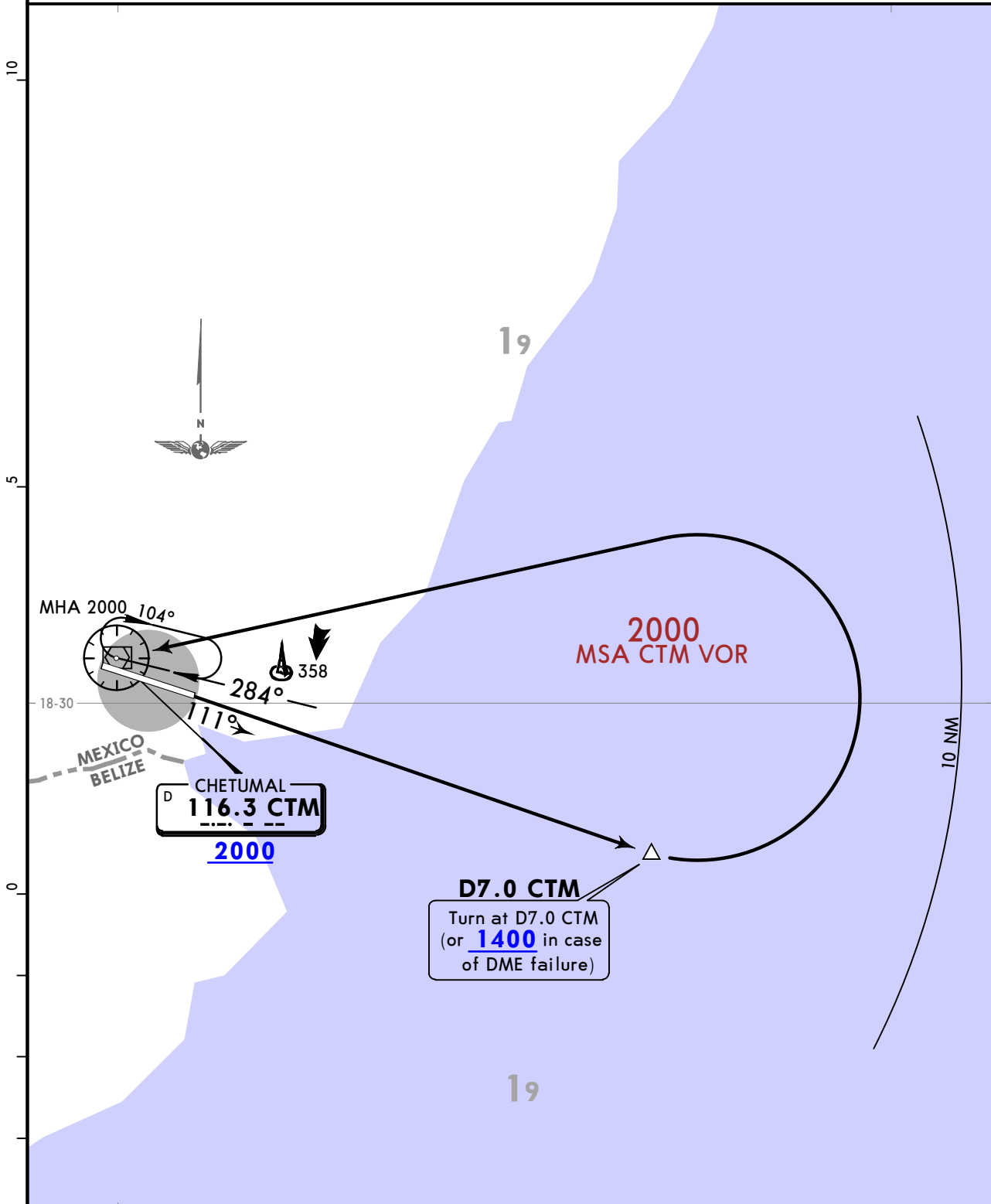
CHETUMAL, MEXICO

SID

Apt Elev
39

Trans alt: 18500

CHETUMAL 3A (CTM3A)
DEPARTURE
(RWY 10)



This SID requires a minimum climb gradient of:
 230 per NM (3.78%) to 1000.

Gnd speed-KT	75	100	150	200	250	300
230 per NM	288	383	575	767	958	1150

INITIAL CLIMB

Climb via CTM R111 to D7.0 CTM (or 1400 in case of DME failure), then turn LEFT within 10 NM to CTM VOR and cross it according to the minimum crossing altitude or ATC instructions.

MMCM/CTM
CHETUMAL INTL

JEPPESSEN
15 MAY 20 (10-3A) Eff 21 May

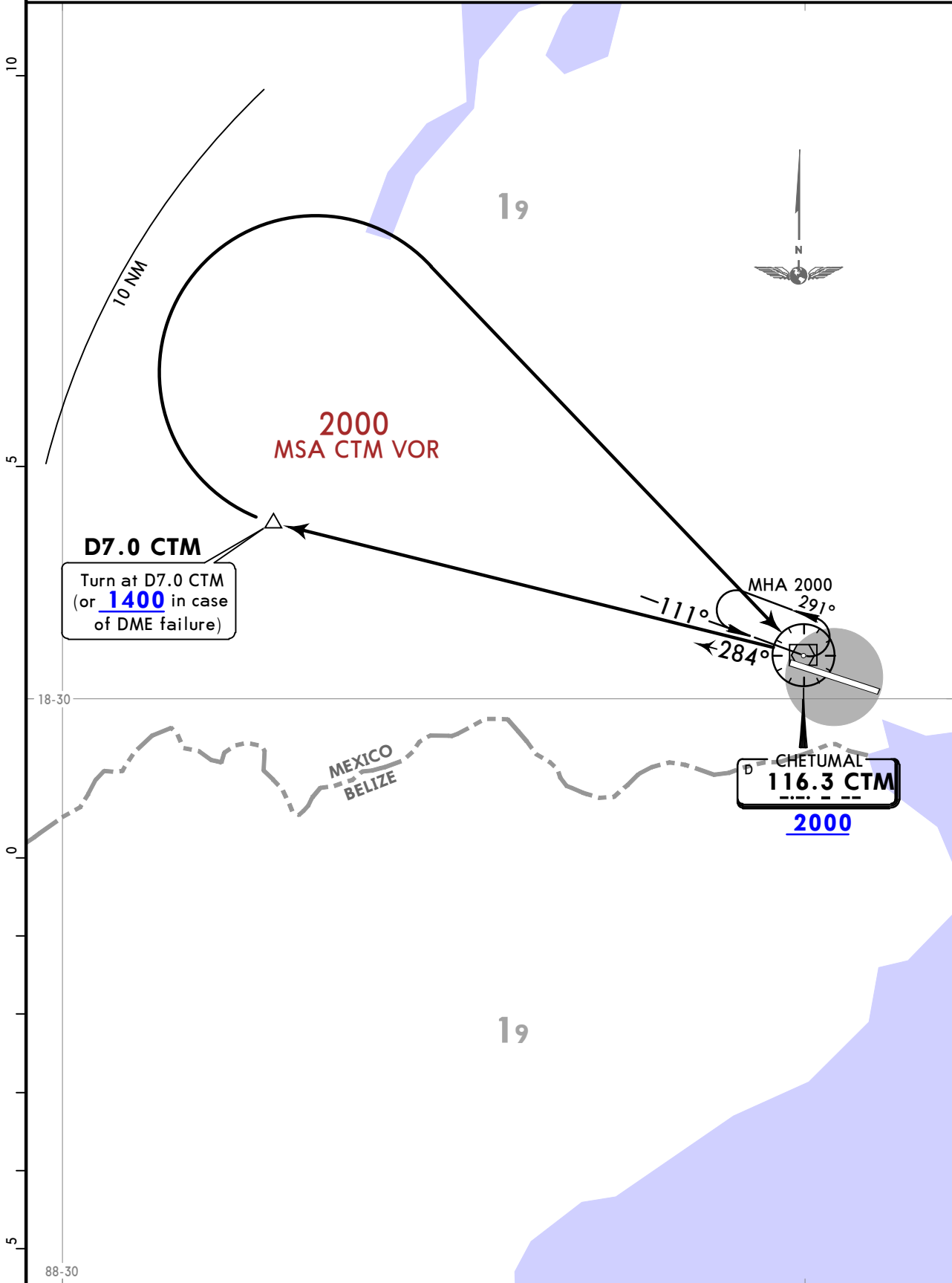
CHETUMAL, MEXICO

SID

Apt Elev
39

Trans alt: 18500

**CHETUMAL 3B (CTM3B)
DEPARTURE
(RWY 28)**



D7.0 CTM
Turn at D7.0 CTM
(or **1400** in case
of DME failure)

**CHETUMAL
116.3 CTM
2000**

INITIAL CLIMB

Climb via CTM R284 to D7.0 CTM (or 1400 in case of DME failure), then turn RIGHT within 10 NM to CTM VOR and cross it according to the minimum crossing altitude or ATC instructions.

MMCM/CTM

JEPPESEN

CHETUMAL, MEXICO

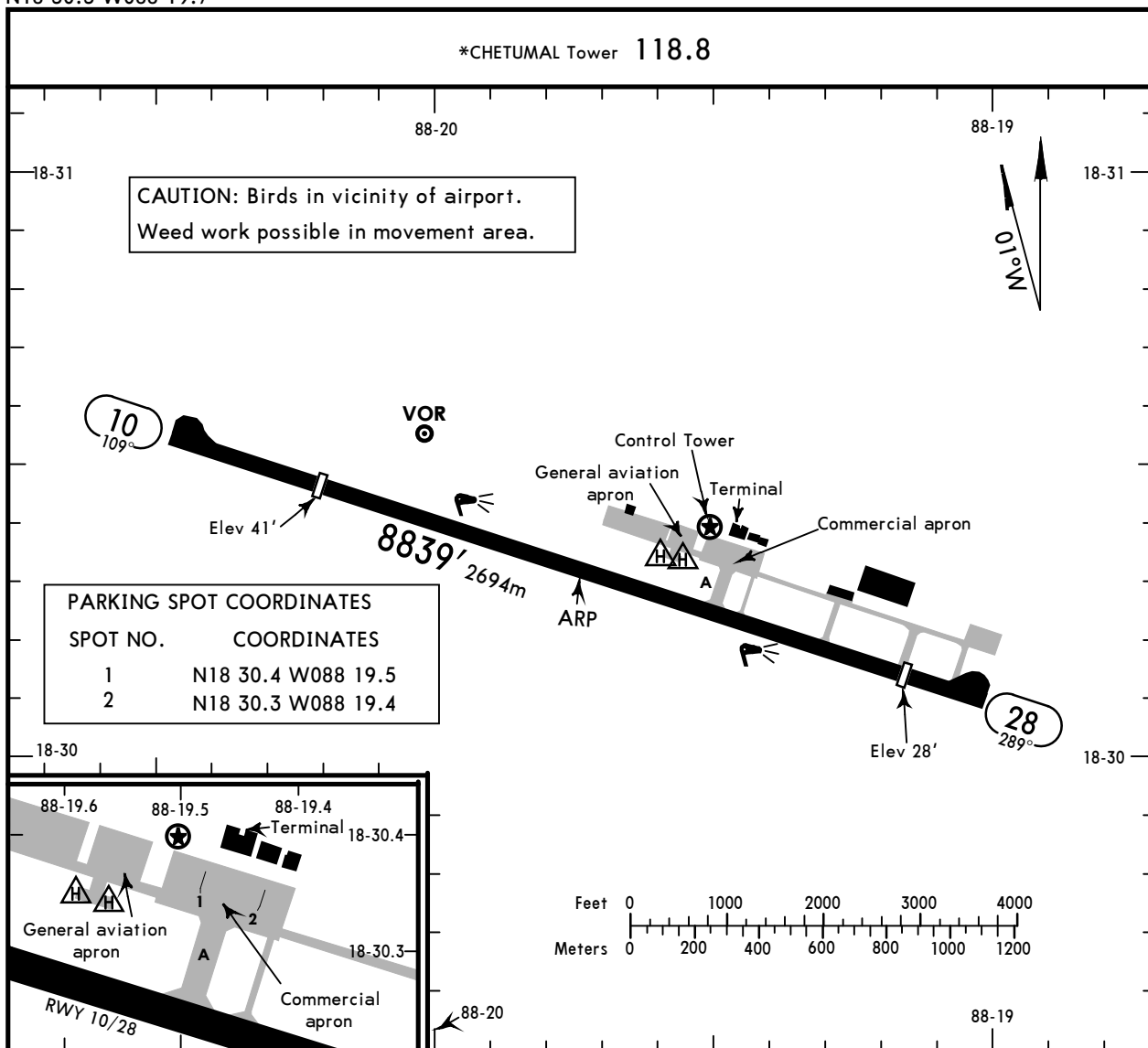
Apt Elev 41'
N18 30.3 W088 19.7

16 FEB 24

10-9

Eff 22 Feb

CHETUMAL INTL



ADDITIONAL RUNWAY INFORMATION

RWY	Landing	Usable Lengths	USABLE LENGTHS		TAKE-OFF	WIDTH
			Threshold	Glide Slope		
10 28	HIRL (60m) PAPI-L (angle 3.0°)		7224' 2202m			148'
			7973' 2430m			45m

State	TAKE-OFF	FOR FILING AS ALTERNATE
	All Rwys	
1 & 2 Eng	500' - V1 V1600m	800' - V2 V3200m
3 & 4 Eng	300' - V1/2 V800m	

MMCM/CTM
CHETUMAL INTL

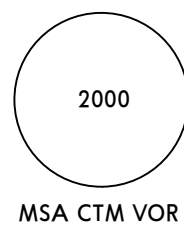
JEPPESSEN
16 FEB 24 **(13-1)** Eff 22 Feb

CHETUMAL, MEXICO
VOR Z Rwy 10

*CHETUMAL Tower 118.8

BRIEFING STRIP™

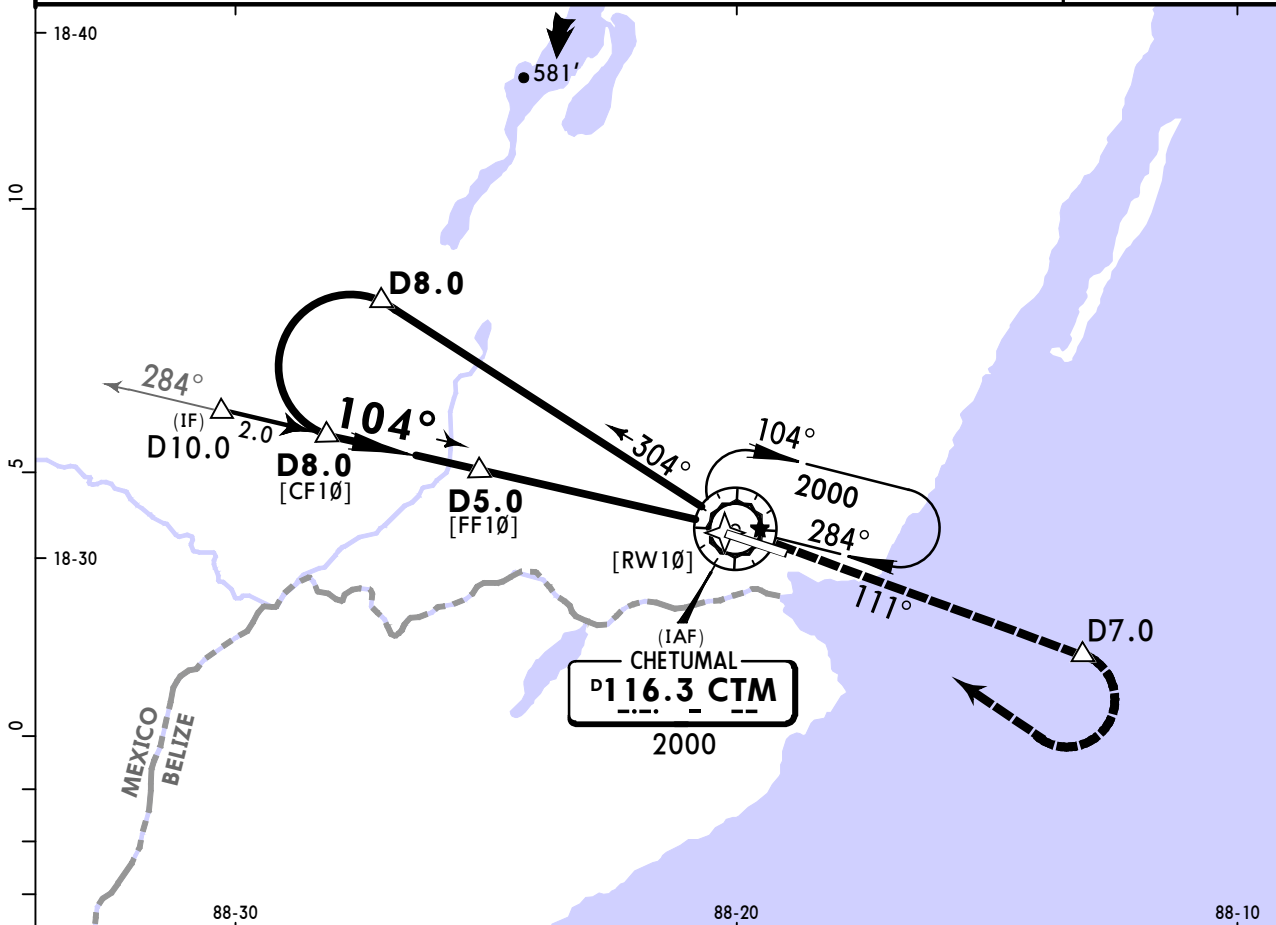
VOR CTM 116.3	Final Apch Crs 104°	D5.0 1600' (1559')	MDA(H) 520' (479')	Apt Elev 41' Rwy 41'
----------------------------	----------------------------------	------------------------------	------------------------------	-------------------------



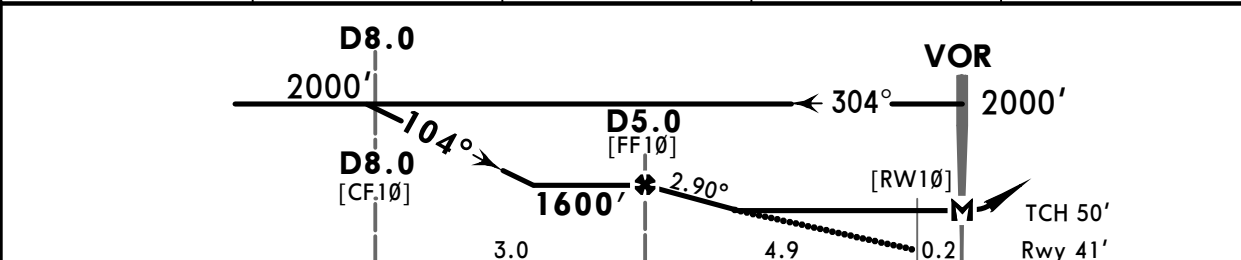
MISSED APCH: Climb via CTM VOR R-111 to D7.0, then turn RIGHT within 10 NM to CTM VOR at the minimum holding altitude.

Alt Set: IN (MB on req) Trans level: FL 195 Trans alt: 18500'

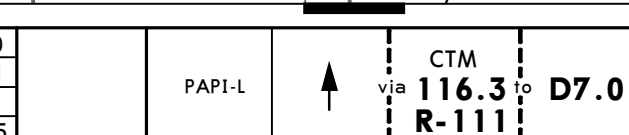
DME required.



DIST TO CTM DME	5.0	4.0	3.0	2.0
ALTITUDE	1600'	1290'	980'	670'



Gnd speed-Kts	70	90	100	120	140	160
Descent Angle	2.90°	359	462	513	616	821
MAP at VOR						
FAF to MAP	5.1	4:22	3:24	3:04	2:33	2:11



State	STRAIGHT-IN LANDING	
	MDA(H) 520' (479')	

	CIRCLE-TO-LAND	
	Not authorized South of Rwy 10-28	

	Max Kts	MDA(H)	V1	V1600m
A	90	660' (619')	V1	V1600m
B	120	720' (679')	V1	V1600m
C	140	720' (679')	V2	V3200m
D	165	720' (679')	V2 1/4	V3600m

MMCM/CTM CHETUMAL INTL

JEPPESSEN
16 FEB 24 (13-2) Eff 22 Feb

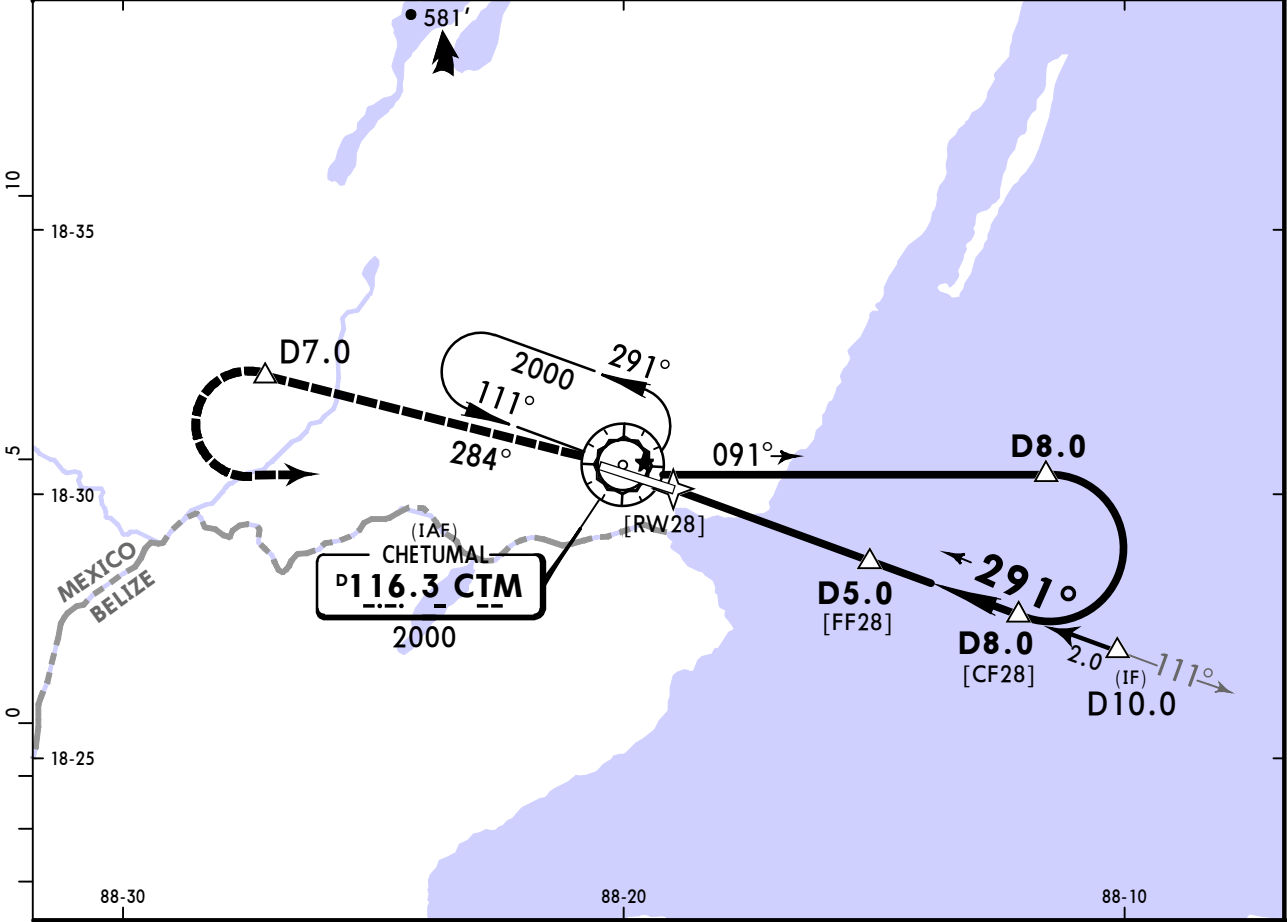
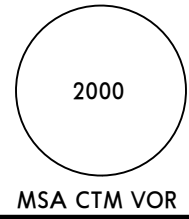
CHETUMAL, MEXICO

VOR Z Rwy 28

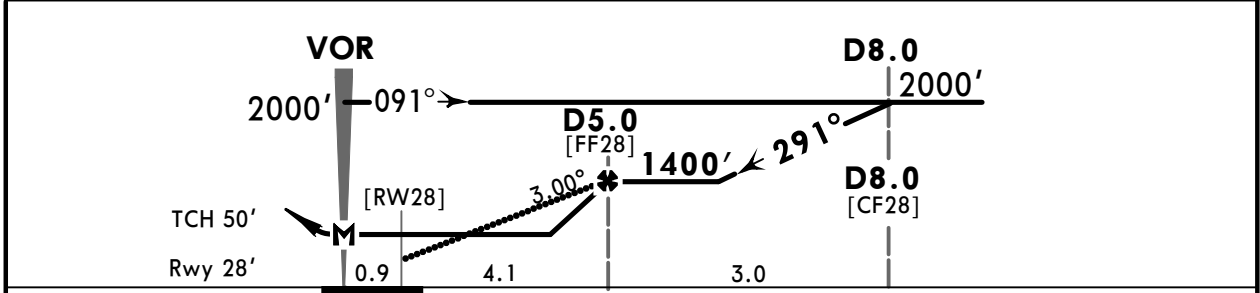
*CHETUMAL Tower 118.8

BRIEFING STRIP™

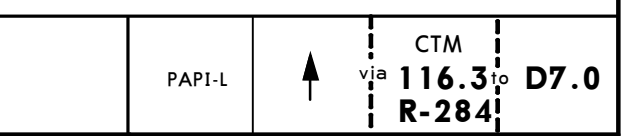
VOR CTM 116.3	Final Apch Crs 291°	D5.0 1400' (1372')	MDA(H) 620' (592')	Apt Elev 41' Rwy 28'
MISSED APCH: Climb via CTM VOR R-284 to D7.0, then turn LEFT within 10 NM to CTM VOR at the minimum holding altitude.				
Alt Set: IN (MB on req)		Trans level: FL 195		Trans alt: 18500'
DME required.				



DIST to CTM DME	5.0	4.0	3.0
ALTITUDE	1400'	1080'	750'



Gnd speed-Kts	70	90	100	120	140	160
Descent Angle 3.00°	372	478	531	637	743	849
MAP at VOR						
FAF to MAP	5.0	4:17	3:20	3:00	2:30	2:09



State		STRAIGHT-IN LANDING		CIRCLE-TO-LAND	
		MDA(H) 620' (592')		Not authorized South of Rwy 10-28	
A	V1	V1600m	Max Kts 90	MDA(H) 660' (619')	V1 V1600m
B			120	720' (679')	V1 V1600m
C	V1 1/2	V2400m	140	720' (679')	V2 V3200m
D	V1 3/4	V2800m	165	720' (679')	V2 1/4 V3600m

MMCM/CTM
CHETUMAL INTL

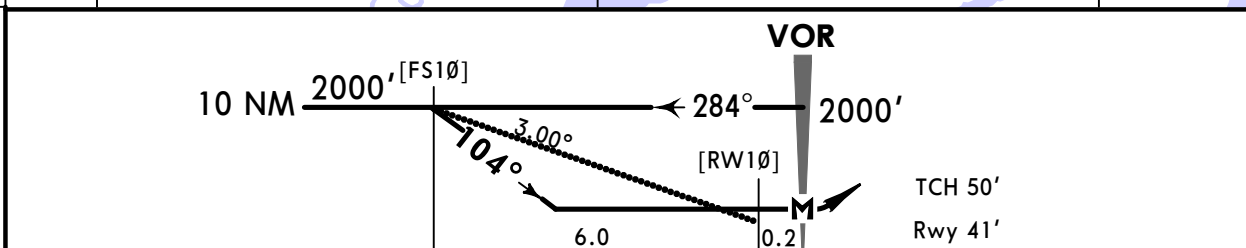
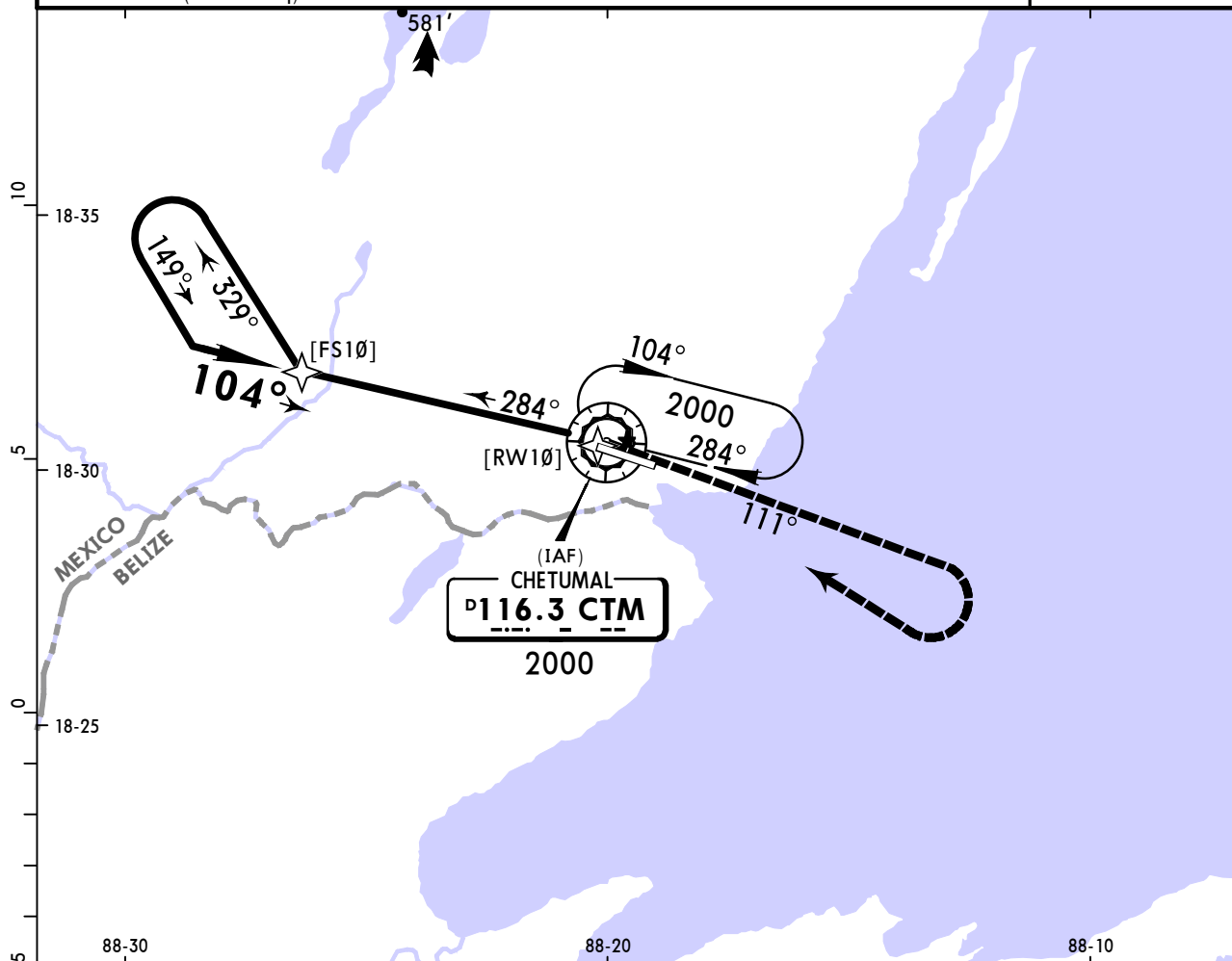
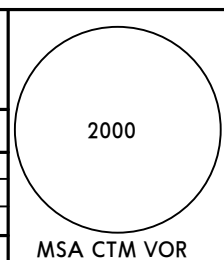
JEPPESEN
16 FEB 24 **13-3** **Eff 22 Feb**

CHETUMAL, MEXICO
VOR Y Rwy 10

*CHETUMAL Tower 118.8

BRIEFING STRIP™

VOR CTM 116.3	Final Apch Crs 104°	No FAF	MDA(H) 580' (539')	Apt Elev 41' Rwy 41'			
MISSED APCH: Climb outbound via CTM VOR R-111, then turn RIGHT within 10 NM to CTM VOR at the minimum holding altitude.							
MAX TIME TO TURN.							
Gnd speed-Kts	80	100	120	140	160	180	200
7 NM to turn	5:15	4:12	3:30	3:00	2:37	2:20	2:06
Alt Set: IN (MB on req)		Trans level: FL 195		Trans alt: 18500'		MSA CTM VOR	



Gnd speed-Kts	70	90	100	120	140	160	PAPI-L	↑ via CTM 116.3 R-111
Descent Angle 3.00°	372	478	531	637	743	849		
MAP at VOR								

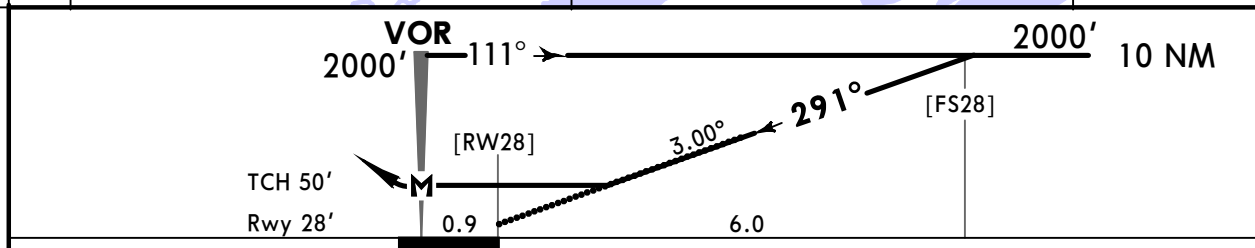
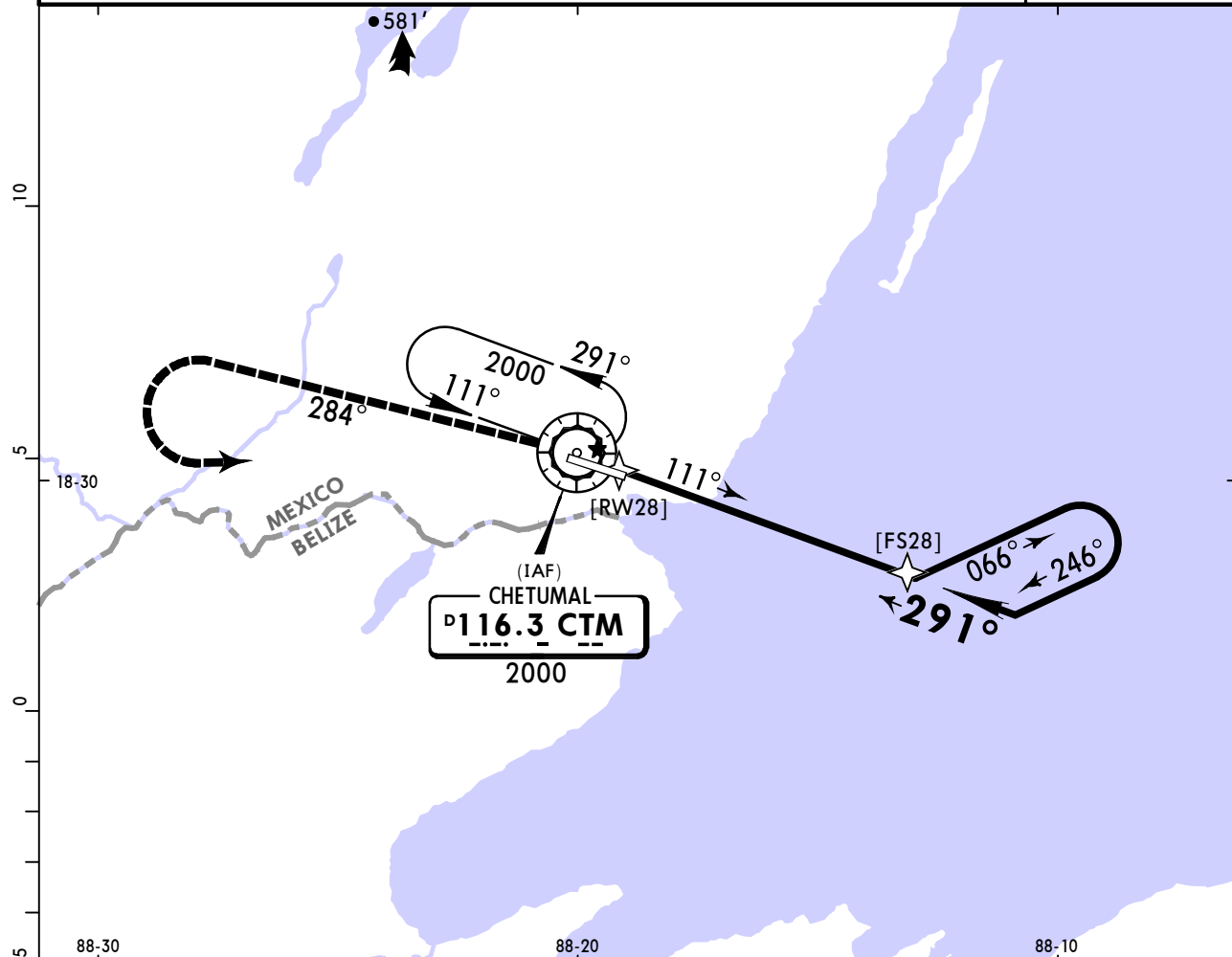
State	STRAIGHT-IN LANDING				CIRCLE-TO-LAND			
	MDA(H) 580' (539')				Not authorized South of Rwy 10-28			
A	V1	V1600m	Max Kts	MDA(H)	90	660' (619')	V1	V1600m
B			120	720' (679')	V1	V1600m		
C	V1 1/2	V2400m	140	720' (679')	V2	V3200m		
D	V1 3/4	V2800m	165	720' (679')	V2 1/4	V3600m		

MMCM/CTM CHETUMAL INTL

JEPPESEN
16 FEB 24 **13-4** **Eff 22 Feb**

CHETUMAL, MEXICO
VOR Y Rwy 28

*CHETUMAL Tower 118.8							
BRIEFING STRIP™	VOR CTM 116.3	Final Apch Crs 291°	No FAF	MDA(H) 660' (632')	Apt Elev 41' Rwy 28'		
	MISSED APCH: Climb outbound via CTM VOR R-284, then turn LEFT within 10 NM to CTM VOR at the minimum holding altitude.						
	MAX TIME TO TURN.						
	Gnd speed-Kts	80	100	120	140	160	180
7 NM to turn	5:15	4:12	3:30	3:00	2:37	2:20	2:06
Alt Set: IN (MB on req)		Trans level: FL 195		Trans alt: 18500'		MSA CTM VOR	



Gnd speed-Kts	70	90	100	120	140	160	PAPI-L	↑ via 116.3 R-284
Descent Angle 3.00°	372	478	531	637	743	849		
MAP at VOR								

State	STRAIGHT-IN LANDING		CIRCLE-TO-LAND	
	MDA(H) 660' (632')		Not authorized South of Rwy 10-28	
A	V1	V1600m	Max Kts 90	MDA(H) 660' (619') V1 V1600m
B			120	720' (679') V1 V1600m
C	V1 3/4	V2400m	140	720' (679') V2 V3200m
D	V2	V3200m	165	720' (679') V2 1/4 V3600m